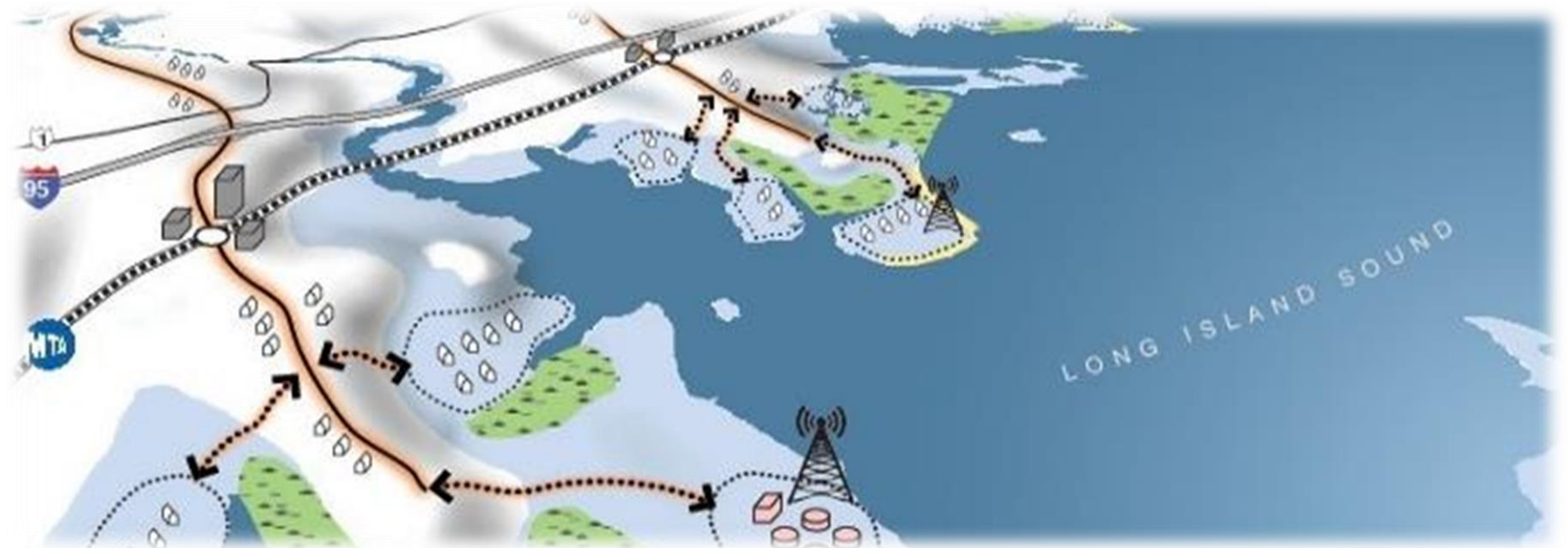


Resilient Connecticut Phase II

Workshop to Discuss Potential Regional Adaptation/Resilience Opportunity Areas

- SCRCOG
✓ May 24, 2021
- MetroCOG
✓ May 25, 2021
- WestCOG
✓ May 26, 2021
- NVCOG
✓ May 27, 2021



Resilient Connecticut Phase II

Potential Regional Adaptation/Resilience Opportunity Areas



Team Present Today

Individual	Role
Victoria Vetre, CFM, SLR Consulting	Presenter and Breakout Room Facilitator
David Murphy, PE, CFM, SLR Consulting	Presenter and Breakout Room Facilitator
Johanna Greenspan-Johnston, Dewberry	Breakout Room Facilitator
Noah Slovin, CFM, SLR Consulting	Zoom Logistics and Breakout Room Controller
John Truscinski, CFM, CIRCA	Facilitator
Joanna Wozniak-Brown, PhD, CIRCA	Facilitator
Yaprak Onat, PhD, CIRCA	Facilitator
Katie Lund, CIRCA	Facilitator

Workshop Objectives

- **Review Methods to Identify Potential Opportunities**
 - ✓ What is a potential adaptation/resilience opportunity area?
 - ✓ How did we link vulnerability mapping with zones of shared risk and regional assets/infrastructure?
- **Breakout Rooms for Discussion about Specific Opportunity Areas**
 - ✓ What does the general profile of areas look like in the region or community that you represent?
 - ✓ Do you have any thoughts about specific areas?
- **Report Out**
 - ✓ What is your impression of the potential opportunity areas?
 - ✓ Did we miss anything?
- **Open Discussion and Next Steps**
 - ✓ What types of adaptation and resilience projects could you imagine in these areas?
 - ✓ How can you participate in the next few steps?

Workshop Schedule

- Review Methods to Identify Potential Opportunities
 - ✓ 1:05 to 1:40 PM
- Breakout Rooms for Discussion about Specific Opportunity Areas
 - ✓ 1:45 to 2:30 PM
- Report Out
 - ✓ 2:30 to 2:40 PM
- Open Discussion and Next Steps
 - ✓ 2:40 to 3:00 PM

Review Methods to Identify Potential Opportunities



Getting Oriented

What is a Potential Regional Adaptation/Resilience Opportunity Area?

- **Potential**
 - ✓ Something that has been identified through analysis of vulnerabilities and risks, but we cannot know yet whether this will make it to the end
- **Regional**
 - ✓ Of significance to more than one community; of significance to a COG or the State
- **Adaptation**
 - ✓ Changing over time to address the challenges caused by climate change
- **Resilience**
 - ✓ The ability to prepare, withstand, recover, and adapt
- **Opportunity**
 - ✓ Something positive we can do where a climate-related challenge exists
- **Area**
 - ✓ More than a handful of parcels; part of a community, municipality, or neighborhood

Getting Oriented

How Did We Get Here? Recap of Discussion Opportunities

- **Summit of November 2020**
 - ✓ Presented the Results of Resilient Connecticut Phase I
 - ✓ Transition into Phase II of Resilient Connecticut
- **COG-Based Meetings – fall 2020 through Present**
 - ✓ Monthly updates to COGs and COG committees
- **January/February 2021 Workshops**
 - ✓ Climate change vulnerability assessment and climate change vulnerability index (CCVI)
 - ✓ Zones of shared risk
- **Webinar of March 2021**
 - ✓ Update on the vulnerability assessment and CCVI

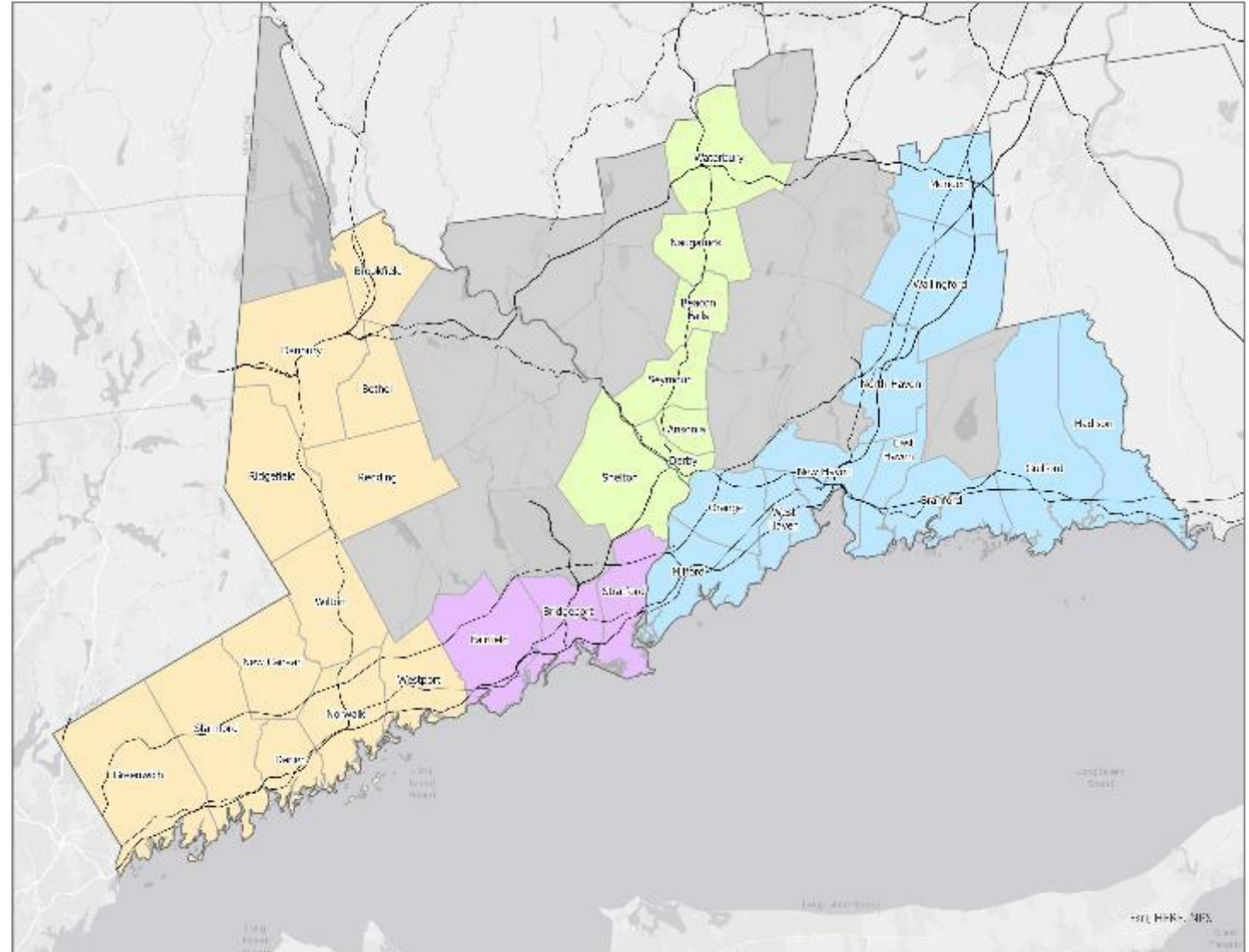
Resilient Connecticut Phase II

Potential Regional Adaptation/Resilience Opportunity Areas

Getting Oriented

Area of Focus

- Fairfield and New Haven Counties
- Communities with Transit-Oriented Development (TOD) Potential
- Communities with “Resilience Corridor” Potential

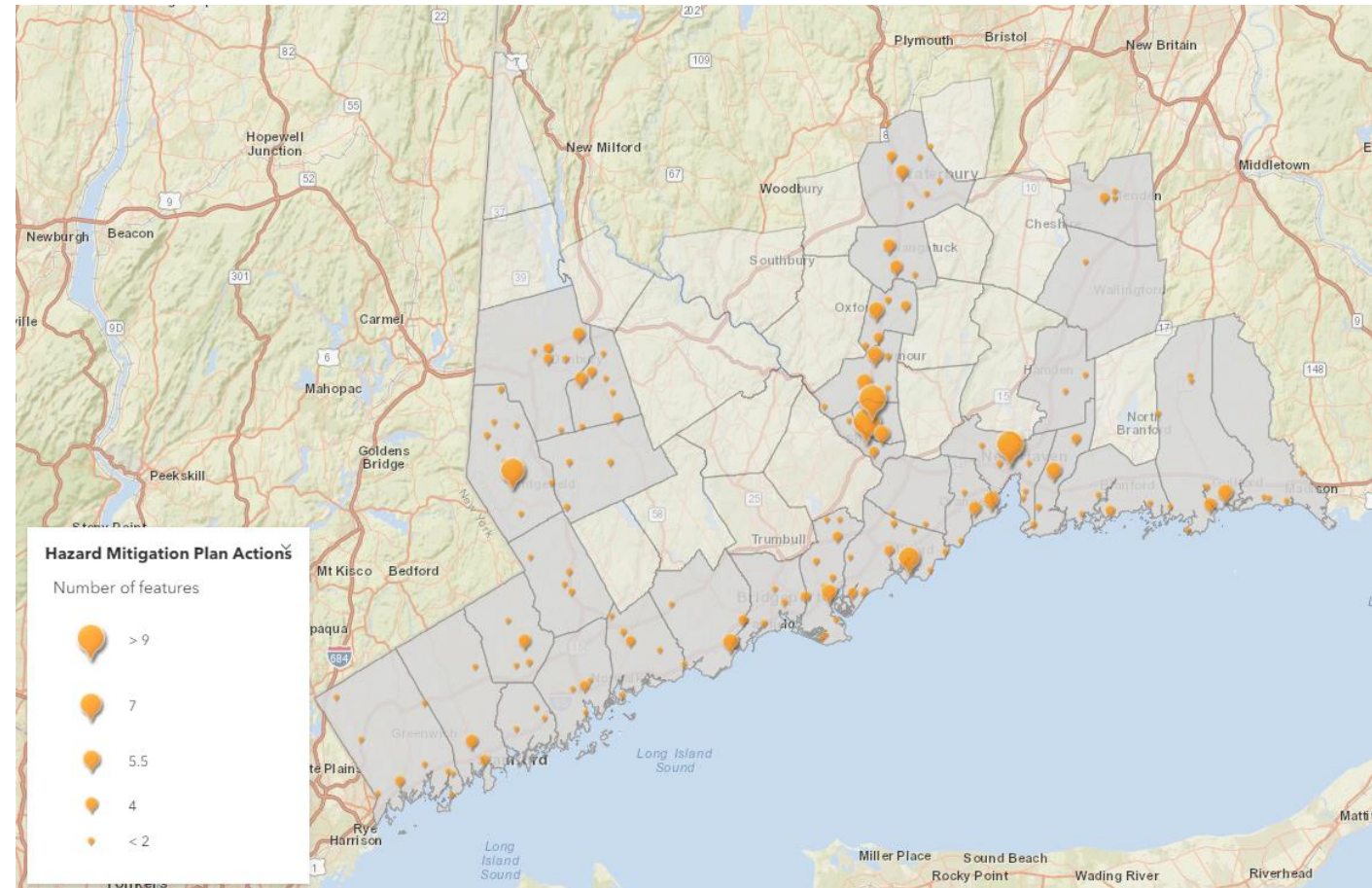


Resilient Connecticut Phase II

Potential Regional Adaptation/Resilience Opportunity Areas

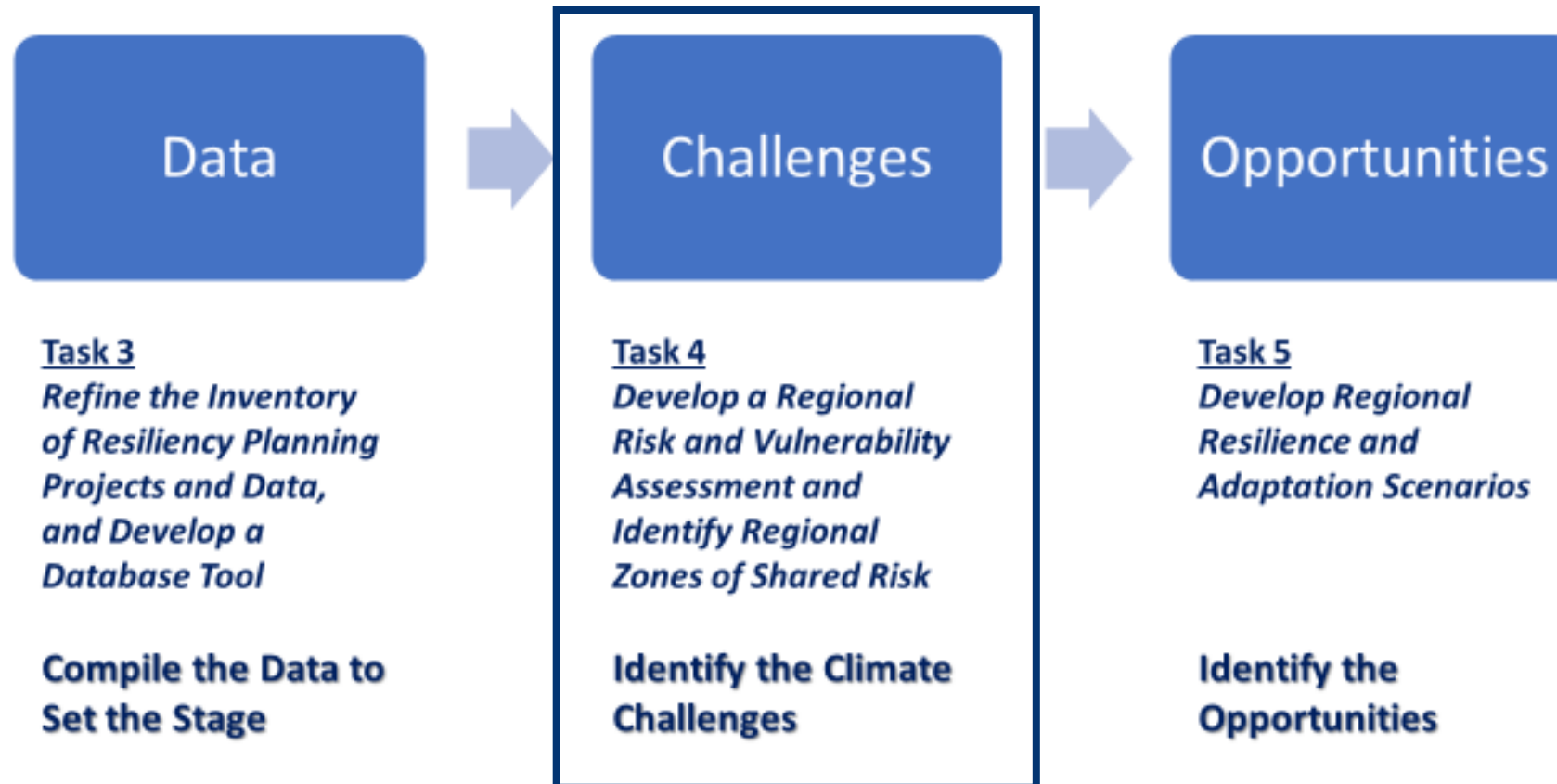
Getting Oriented *Not Starting from Scratch*

- Worked with COGs to collect data
- Resilient Connecticut builds on other planning efforts such as Hazard Mitigation Plans, POCDs, and Community Resilience Building workshops



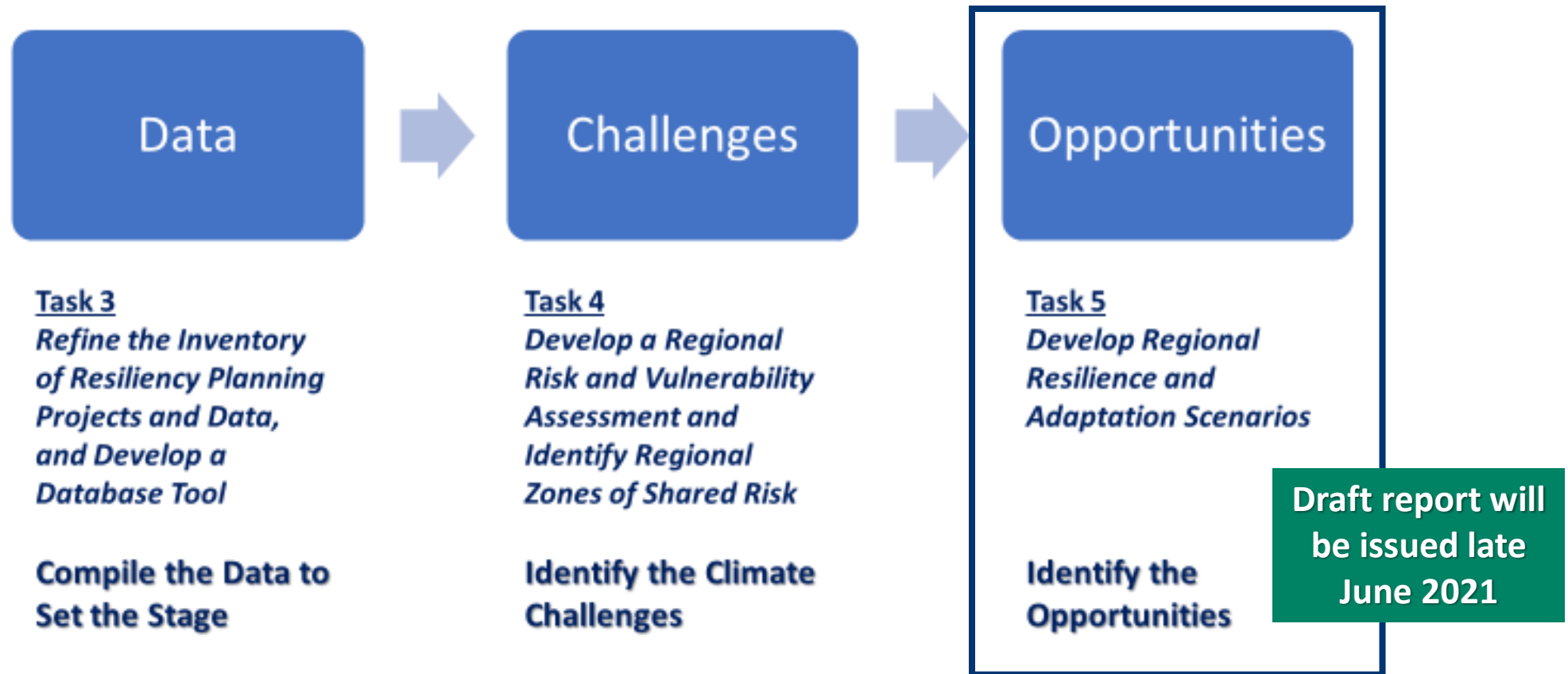
Getting Oriented

Transition from Challenges to Opportunities



Getting Oriented

Transition from Challenges to Opportunities



Resilient Connecticut Phase II

Potential Regional Adaptation/Resilience Opportunity Areas



Getting Oriented

Terms to Understand

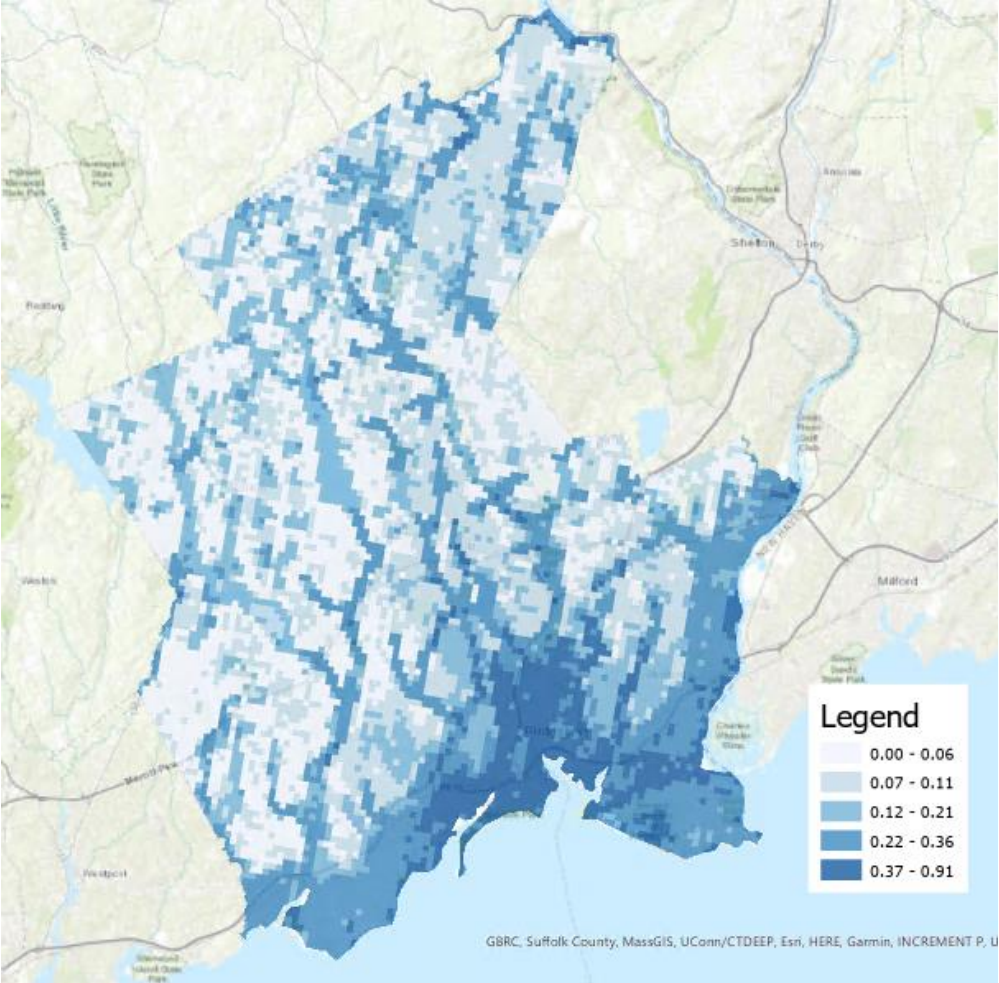
Considerations	Definition
Flood Vulnerability	A contributor to climate risk associated with flooding, this is a combination of flood exposure, flood sensitivity, and flood adaptive capacity. Examine in the CCVI viewer.
Heat Vulnerability	A contributor to climate risk associated with heat, this is a combination of heat exposure, heat sensitivity, and heat adaptive capacity. Examine in the CCVI viewer.
Social Vulnerability	Factors such as poverty and lack of access to transportation that may weaken a community's ability to prevent losses during a disaster.
Zone of Shared Risk	Areas that face common challenges already, or caused by climate change, and therefore risks are shared among or between groups of people that may have different perspectives and priorities for resilience.
Regional Asset or Infrastructure	Asset or Infrastructure that serves more than one community; or is important to a region.
Area of Planned Development Present	Areas identified in POCDs and RPOCDs for a variety of development and redevelopment.
Federal Opportunity Zone	Opportunity Zones provide tax benefits to people and companies with the goal of investing in urban areas.
Transit-Oriented Development Area	Supports creation of compact, pedestrian-oriented, mixed-use communities centered around train or transit systems.

Resilient Connecticut Phase II

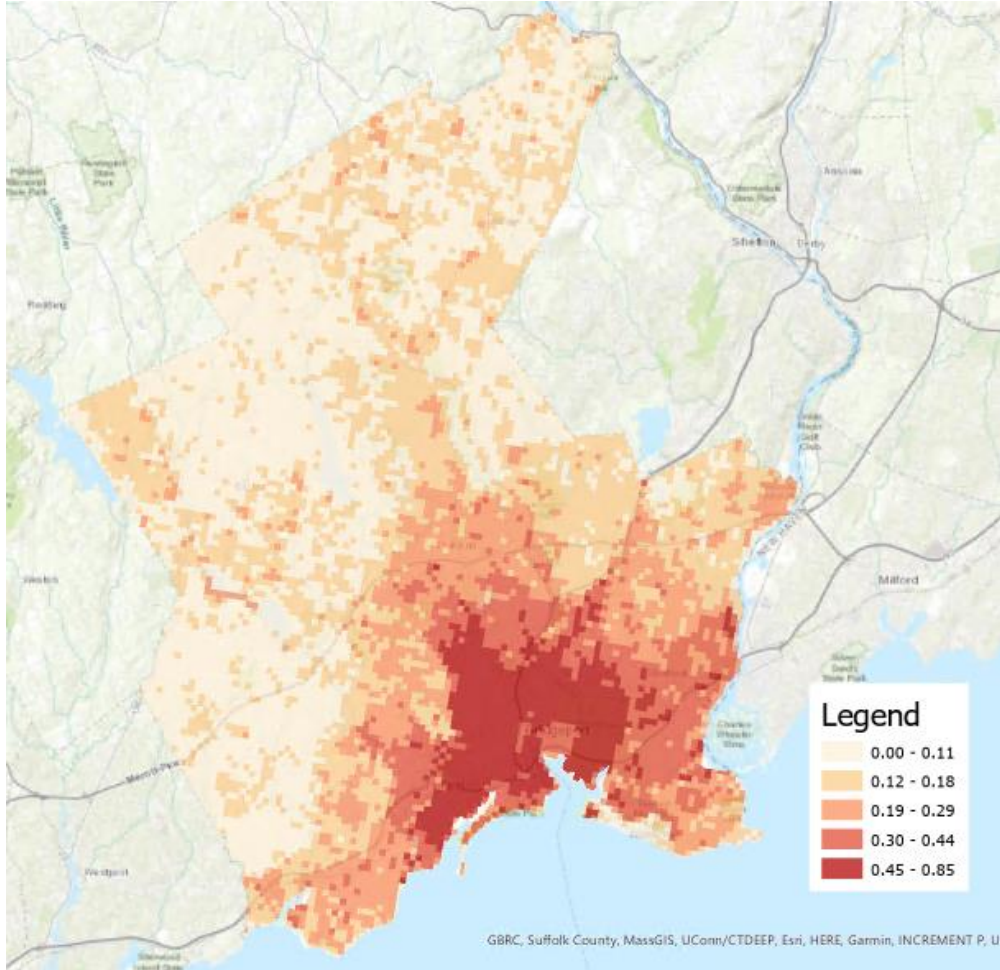
Potential Regional Adaptation/Resilience Opportunity Areas



Flood Vulnerability



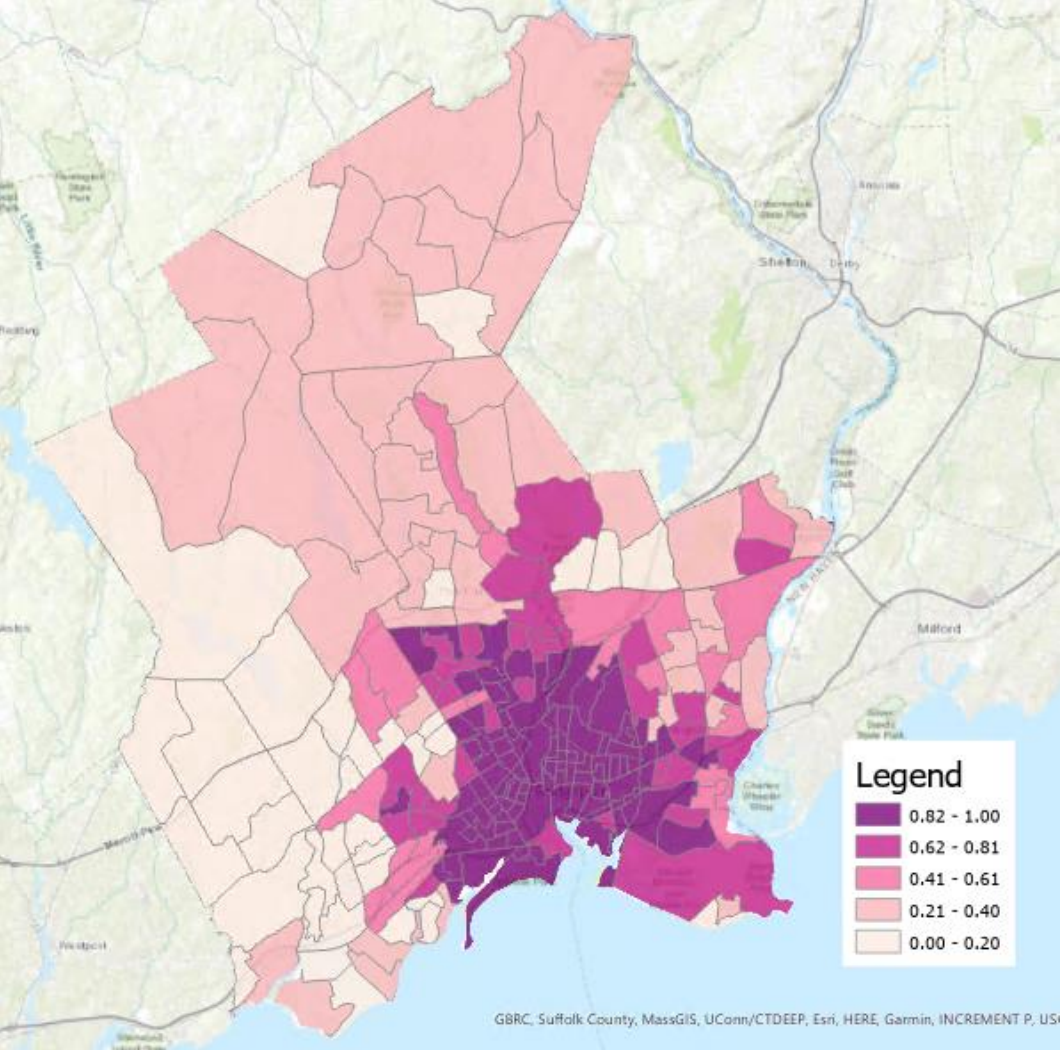
Heat Vulnerability



Resilient Connecticut Phase II

Potential Regional Adaptation/Resilience Opportunity Areas

Social Vulnerability Index



Zones of Shared Risk



Examples of Regional Assets and Infrastructure

Regional Assets and Infrastructure that Serve Numerous Communities by Spanning the Region

- Amtrak
- MetroNorth
- CTRail
- Interstate Highways
- Merritt/Wilbur Cross Parkway
- Route 8
- Route 7
- Route 1
- Major Water Systems such as Aquarion Water Company and Regional Water Authority
- GHNWPCA and other Major Sewer Systems
- Eversource and UI transmission

And more...

Regional Assets that Serve Numerous Communities from One Location

- State facilities
 - State facilities like courthouses, public safety facilities, State police facilities
 - CT DOT highway garages
- Hospitals
- Major Ports
 - New Haven
 - Bridgeport
 - Stamford
- Airports
- Danbury Mall Mass Distribution Facility and similar
- UConn branches
- Colleges in the CSCU System such as Gateway CC and SCSC

And more...

Regional Economic Assets that Serve Numerous Communities from One Location

- Major employers
- Major employment areas
- Large tourist sites and museums
- Historic districts
- Long Wharf area
- Steel Point area
- Retail shopping malls

And more...

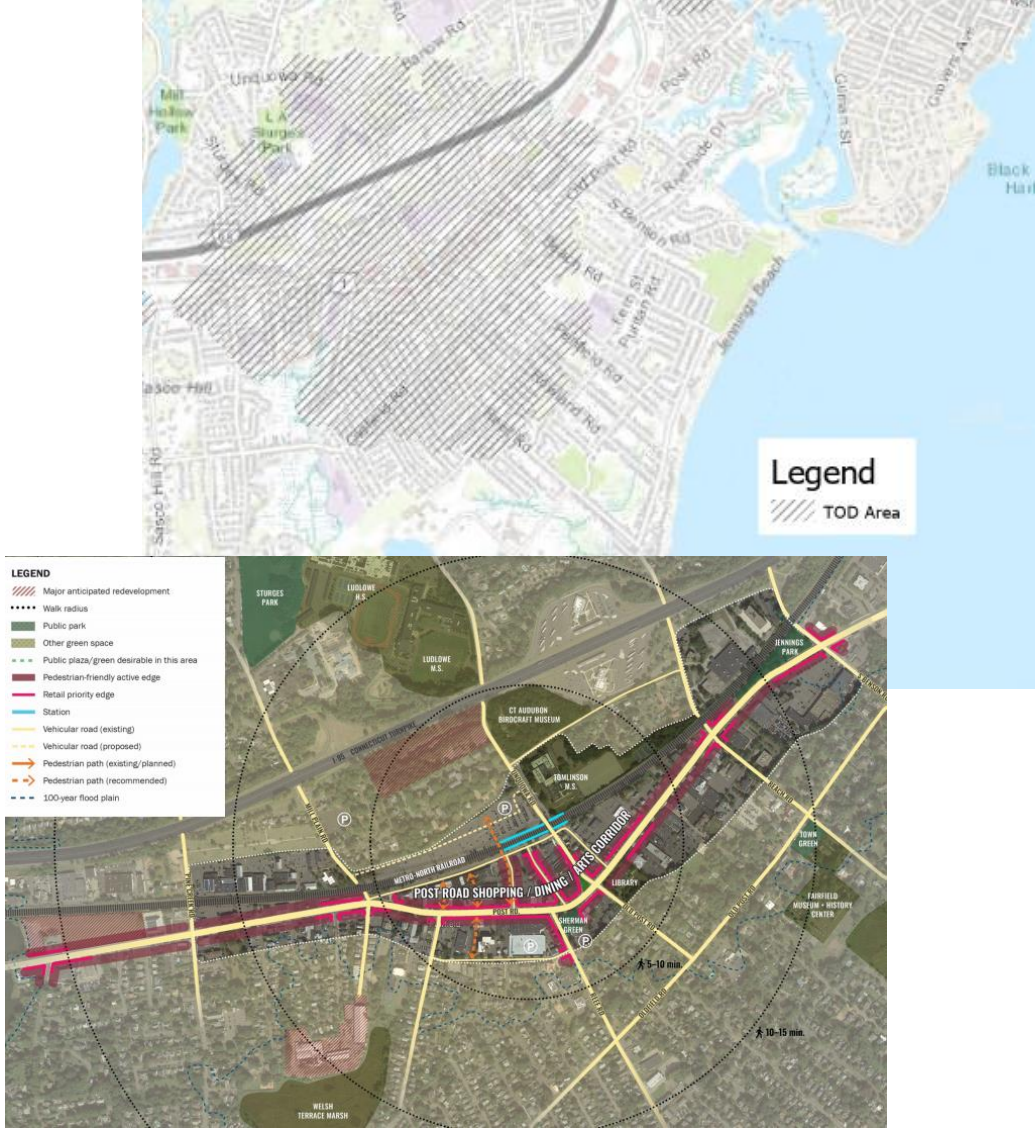
Resilient Connecticut Phase II

Potential Regional Adaptation/Resilience Opportunity Areas

Planned Development Area



Transit-Oriented Development Area



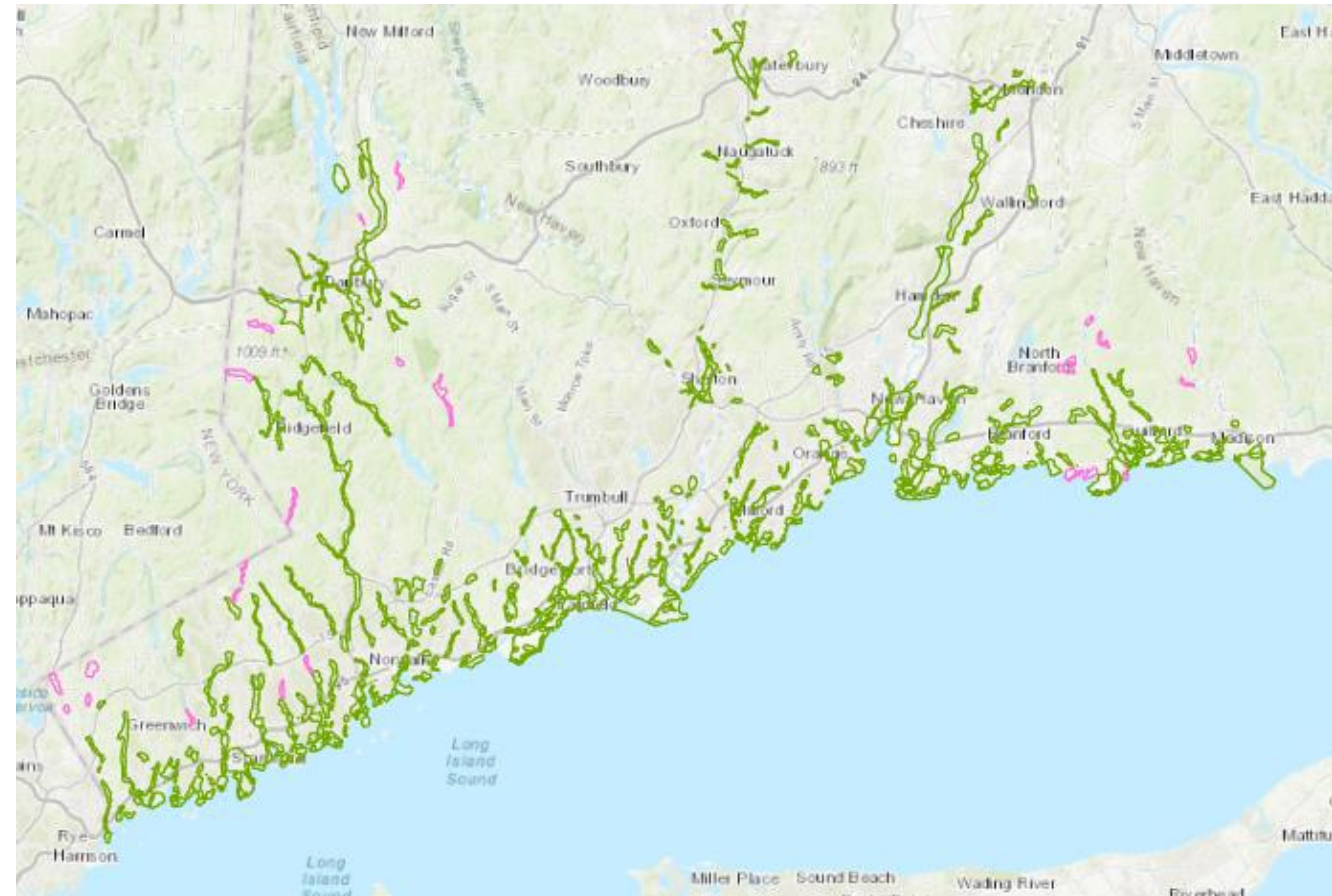
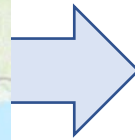
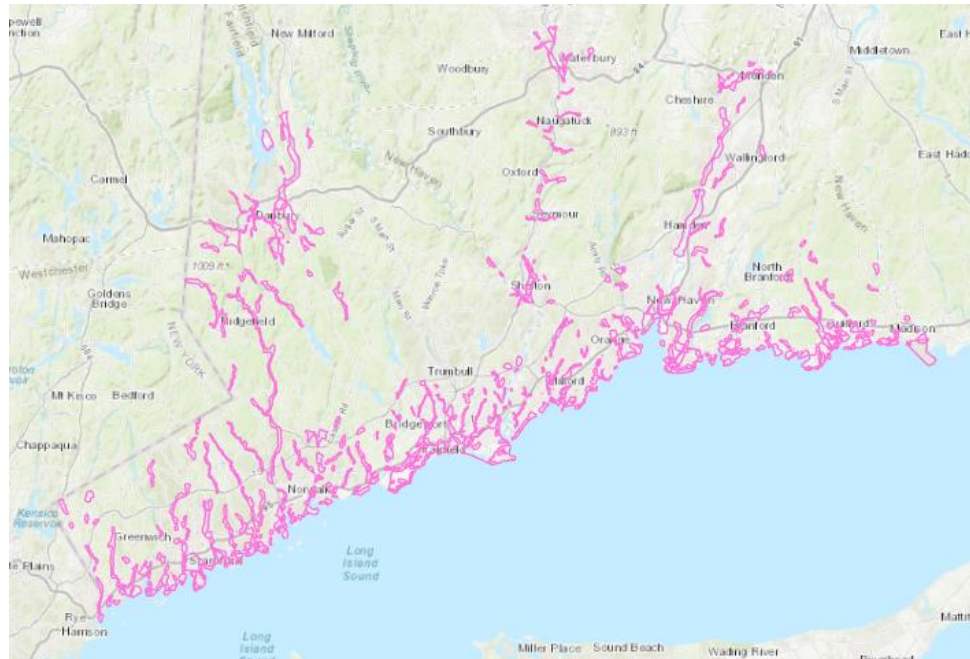
Resilient Connecticut Phase II

Potential Regional Adaptation/Resilience Opportunity Areas



Overlay and Score Process

- Linked Regional Assets with ZSR
 - ✓ Of 656 ZSR, 626 are “regional”



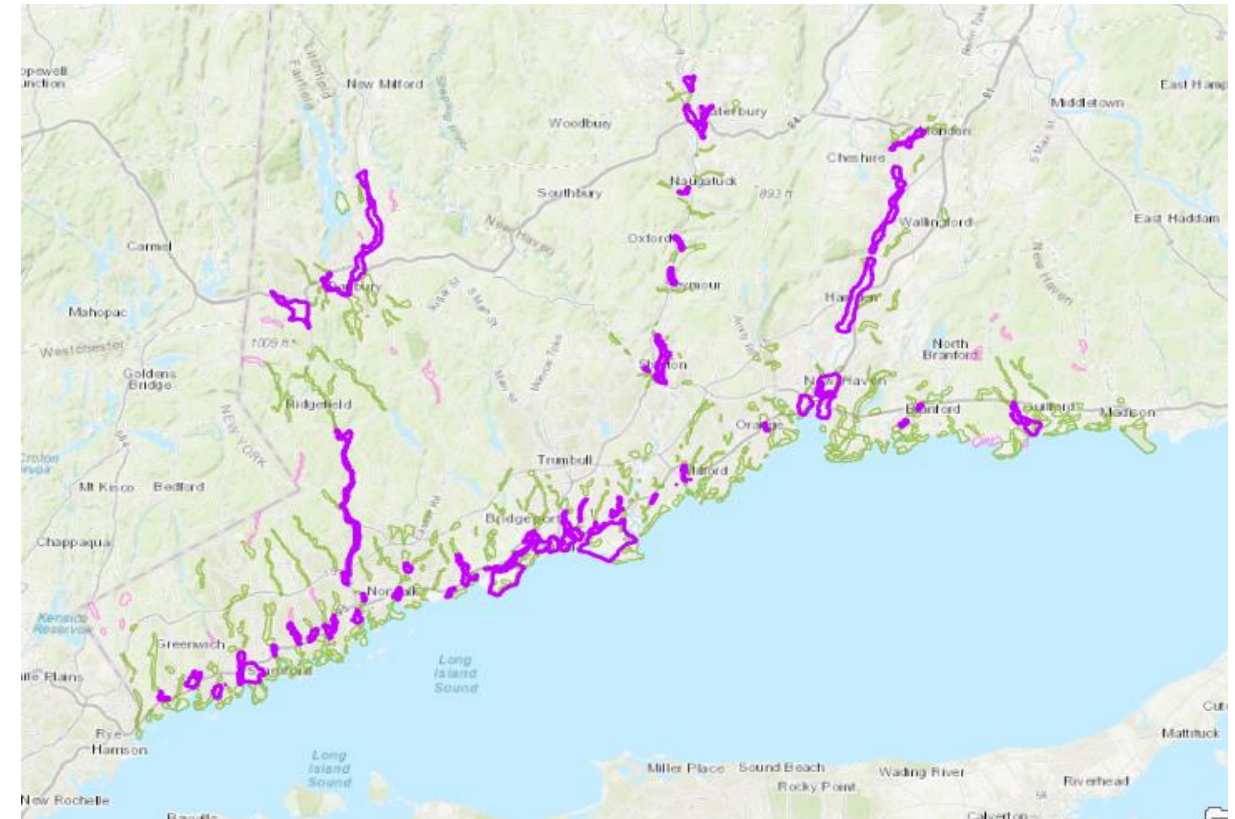
Resilient Connecticut Phase II

Potential Regional Adaptation/Resilience Opportunity Areas



Overlay and Score Process

- Linked Regional Assets with ZSR
 - ✓ Of 656 ZSR, 626 are “regional”
- Identified top 20% of RZSR
 - ✓ Based on number of assets in each RZSR
 - ✓ 86 in top 20% - have between 6 and 16 assets



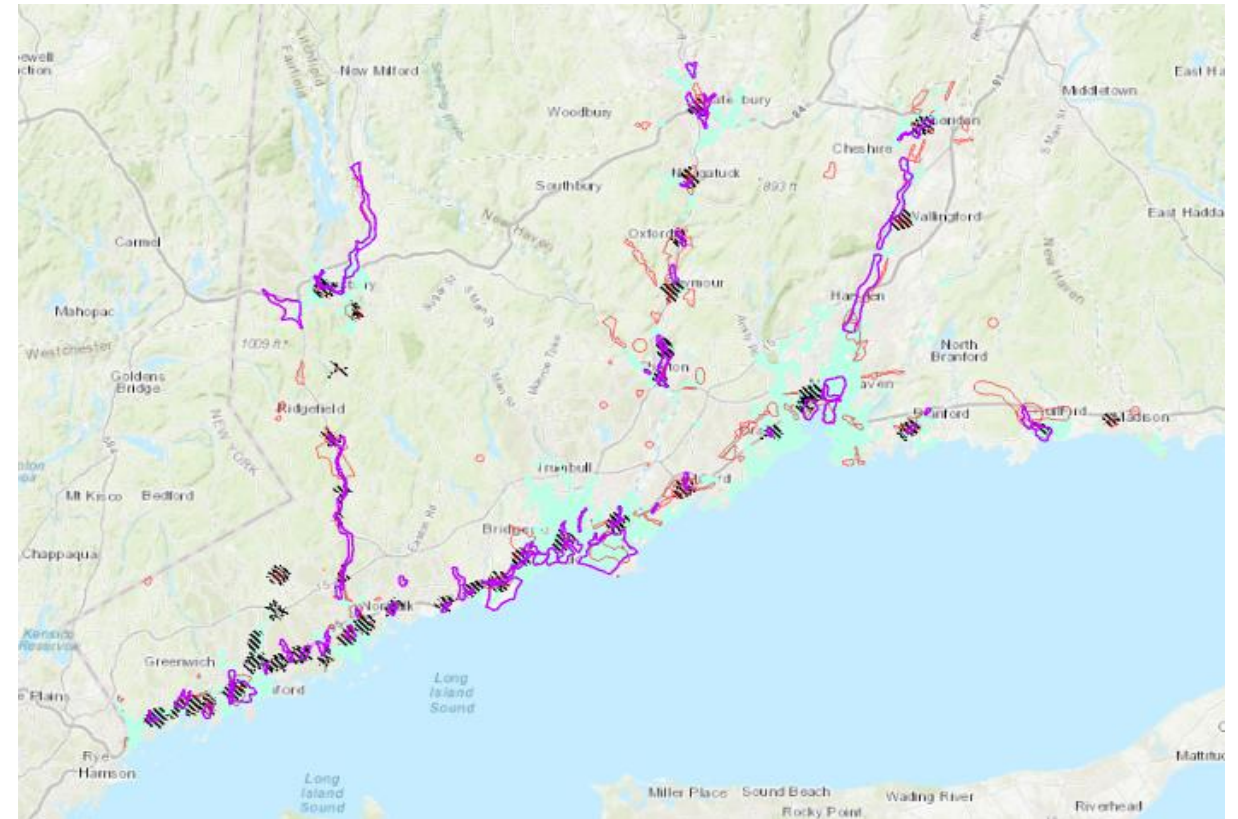
Resilient Connecticut Phase II

Potential Regional Adaptation/Resilience Opportunity Areas



Overlay and Score Process

- **Linked Regional Assets with ZSR**
 - ✓ Of 656 ZSR, 626 are “regional”
- **Identified top 20% of RZSR**
 - ✓ Based on number of assets in each RZSR
 - ✓ 86 in top 20% - have between 6 and 16 assets
- **Identified intersection of top RZSR and:**
 - ✓ High flood/high heat scenario
 - ✓ TOD areas
 - ✓ Planned future development



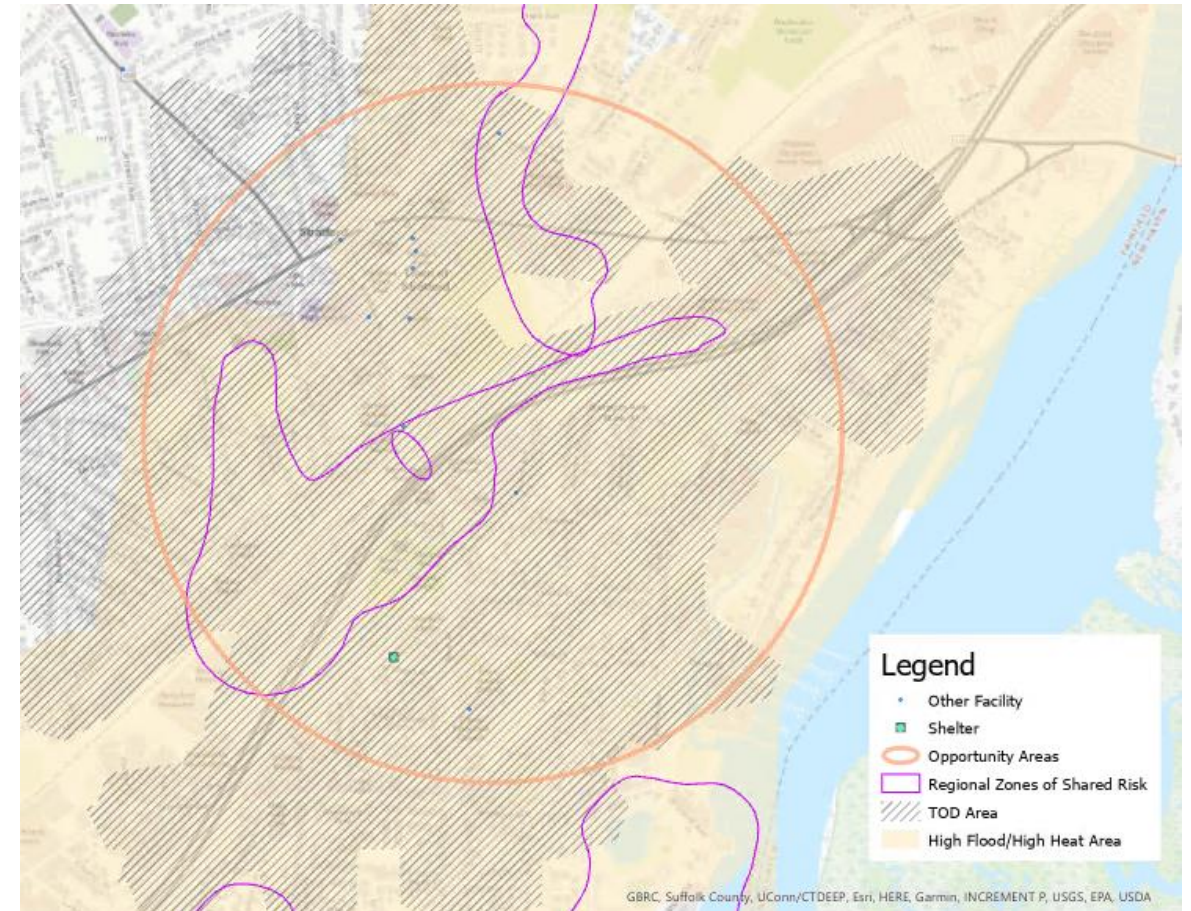
Resilient Connecticut Phase II

Potential Regional Adaptation/Resilience Opportunity Areas

Tier 1 and Tier 2

Not based on priority, just the process

- Tier 1, typically all intersect:
 - ✓ RZSR
 - ✓ High flood/high heat
 - ✓ TOD



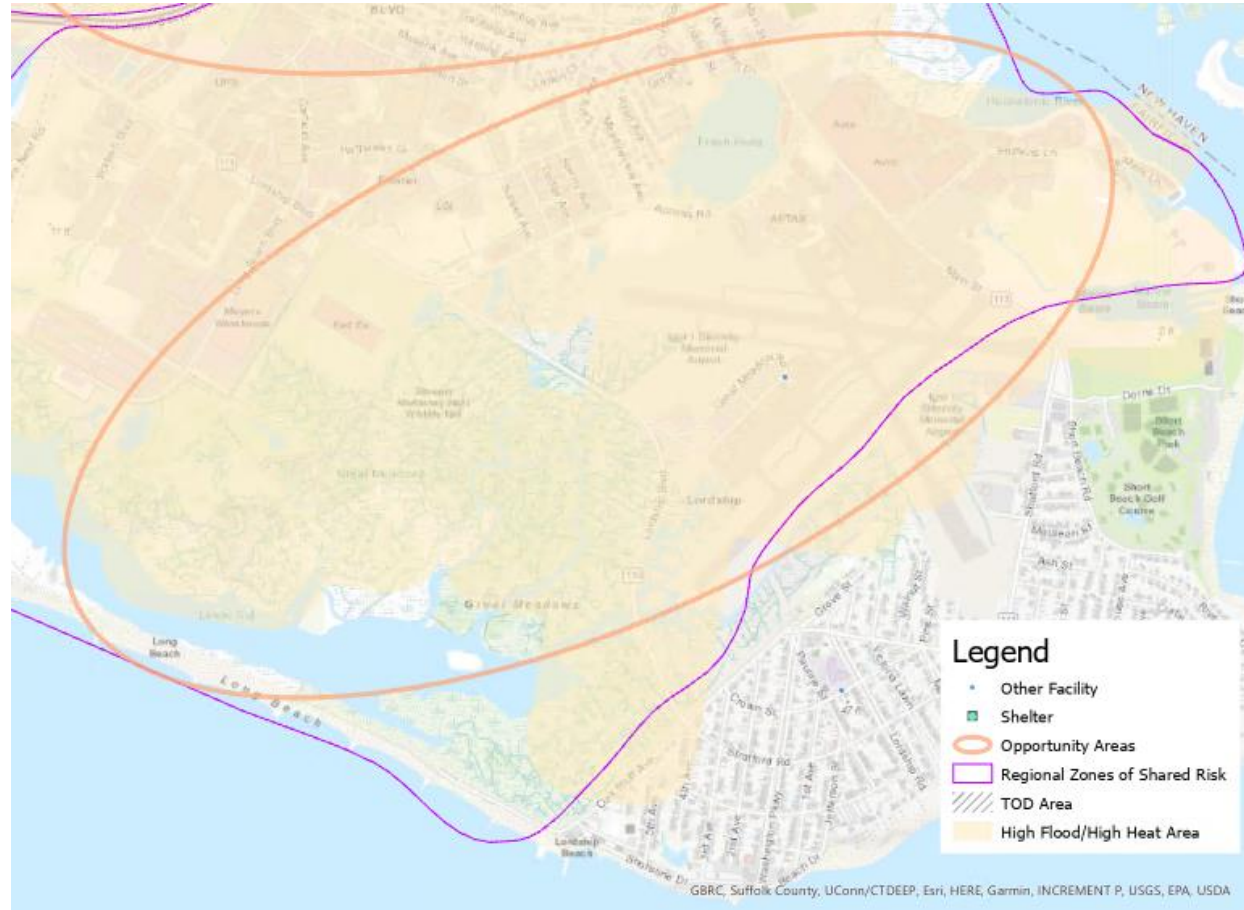
Resilient Connecticut Phase II

Potential Regional Adaptation/Resilience Opportunity Areas

Tier 1 and Tier 2

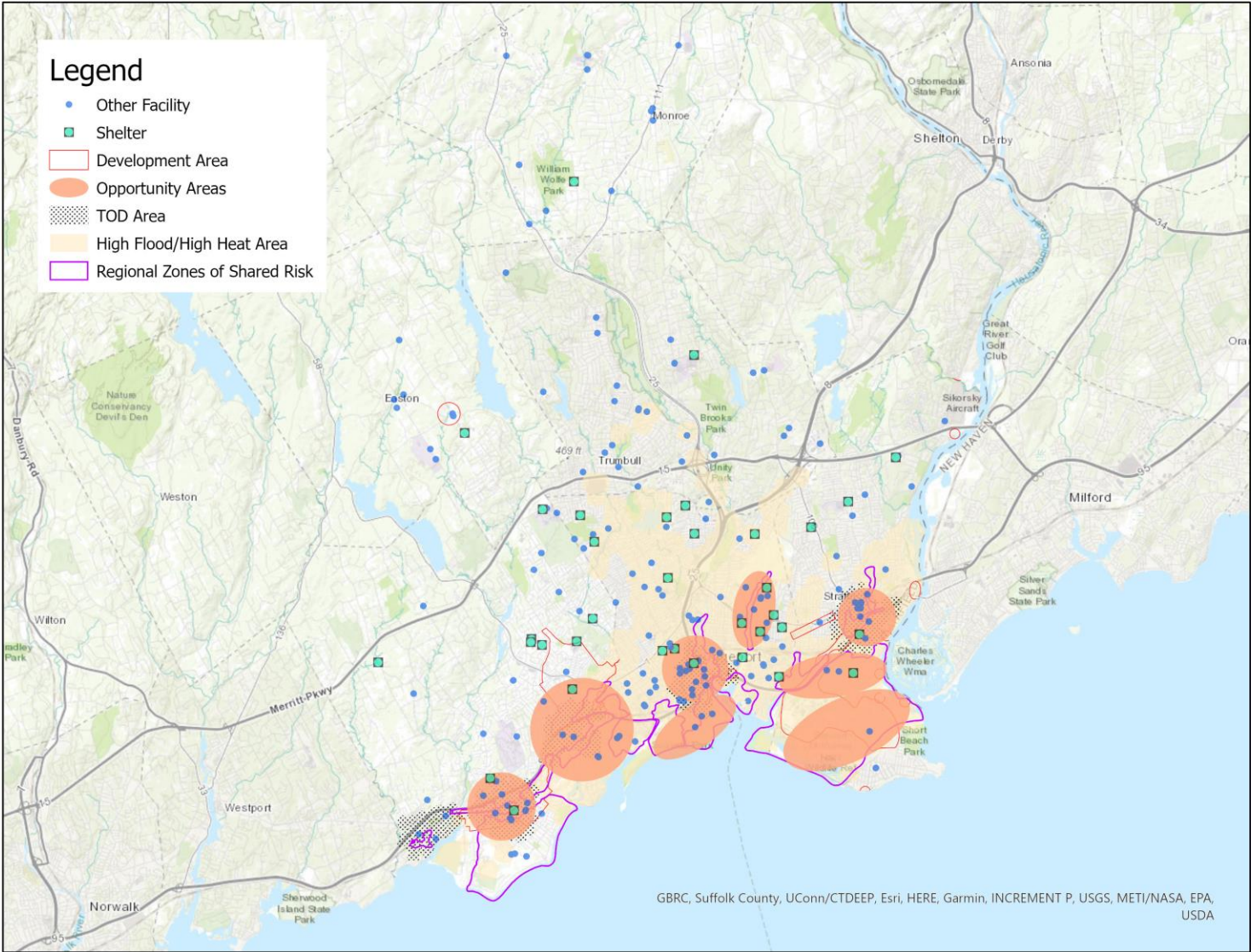
Not based on priority, just the process

- Tier 1, typically all intersect:
 - ✓ RZSR
 - ✓ High flood/high heat
 - ✓ TOD
- Tier 2, not a perfect intersect:
 - ✓ Contains RZSR
 - ✓ Proximity to TOD
 - ✓ Not fully encompassed by high flood/high heat



Resilient Connecticut Phase II

Potential Regional Adaptation/Resilience Opportunity Areas



Resilient Connecticut Phase II

Potential Regional Adaptation/Resilience Opportunity Areas



Introduction to Breakout Rooms About Specific Areas



Resilient Connecticut Phase II

Potential Regional Adaptation/Resilience Opportunity Areas



- Here are some **reminders** for our discussion:
 - ✓ Regional adaptation/resilience opportunity areas are the geographic locations that our team has identified based on overlays of **flood vulnerability, heat vulnerability, social vulnerability, zones of shared risk, and regional assets and infrastructure.**
 - ✓ Each potential regional adaptation/resilience opportunity area identified in the region is depicted on an **individual page.**
- Here are some **hints** for our discussion:
 - ✓ **Scores** associated with the flood, heat, and social vulnerabilities are relative scores. A score of “0.9” in one opportunity area demonstrates higher vulnerability than a score of “0.5” in a nearby opportunity area.
 - ✓ **ID numbers** for the zones of shared risk include a watershed ID. For example, “7106” is the Ash Creek watershed.
 - ✓ **“Areas of planned development”** have been gathered from community plans, but the names that we selected for these information sheets are a work in progress.

What should you keep in mind while discussing resilience opportunity areas?

- ✓ Are there other assets in a particular area that may have been overlooked?
- ✓ Is there a resource or asset located *outside* of this area that alleviates some vulnerability?
- ✓ Is there a specific **flood** or **heat** risk location that comes to mind?
- ✓ Are there any other planning efforts occurring in a specific opportunity area?

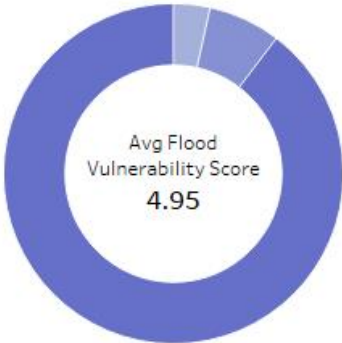
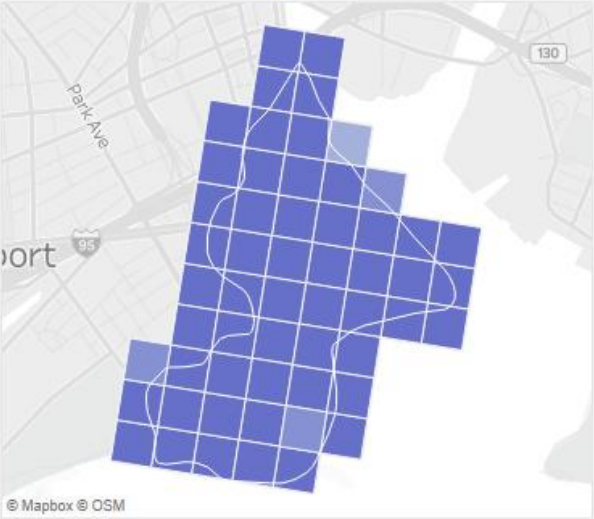
Resilient Connecticut Phase II

Potential Regional Adaptation/Resilience Opportunity Areas

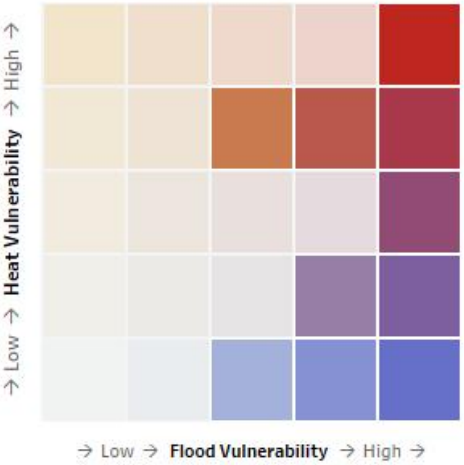
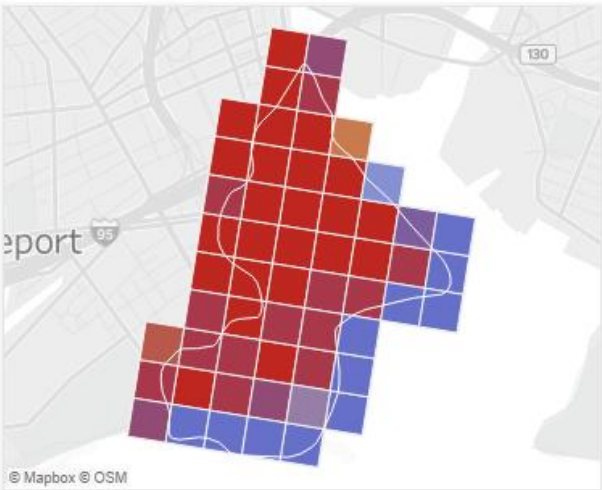
Zone of Shared Risk:
7000-06-20-0
Town: Bridgeport



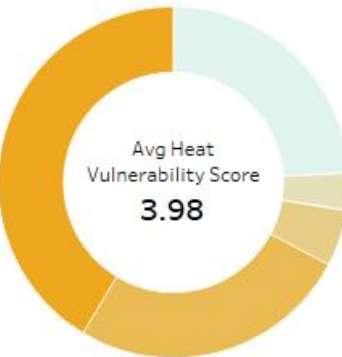
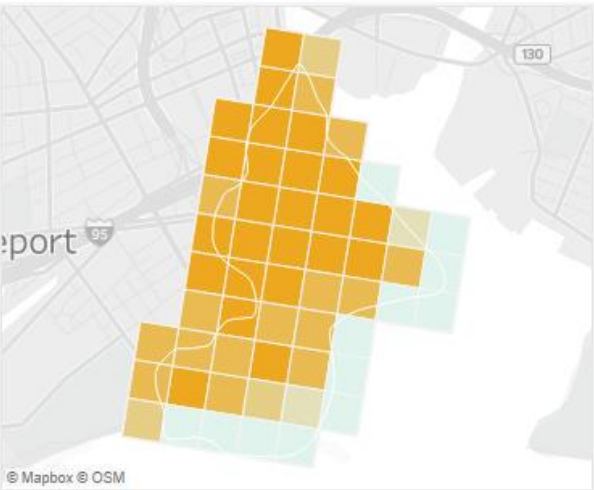
Flood Vulnerability



Combined Vulnerability



Heat Vulnerability



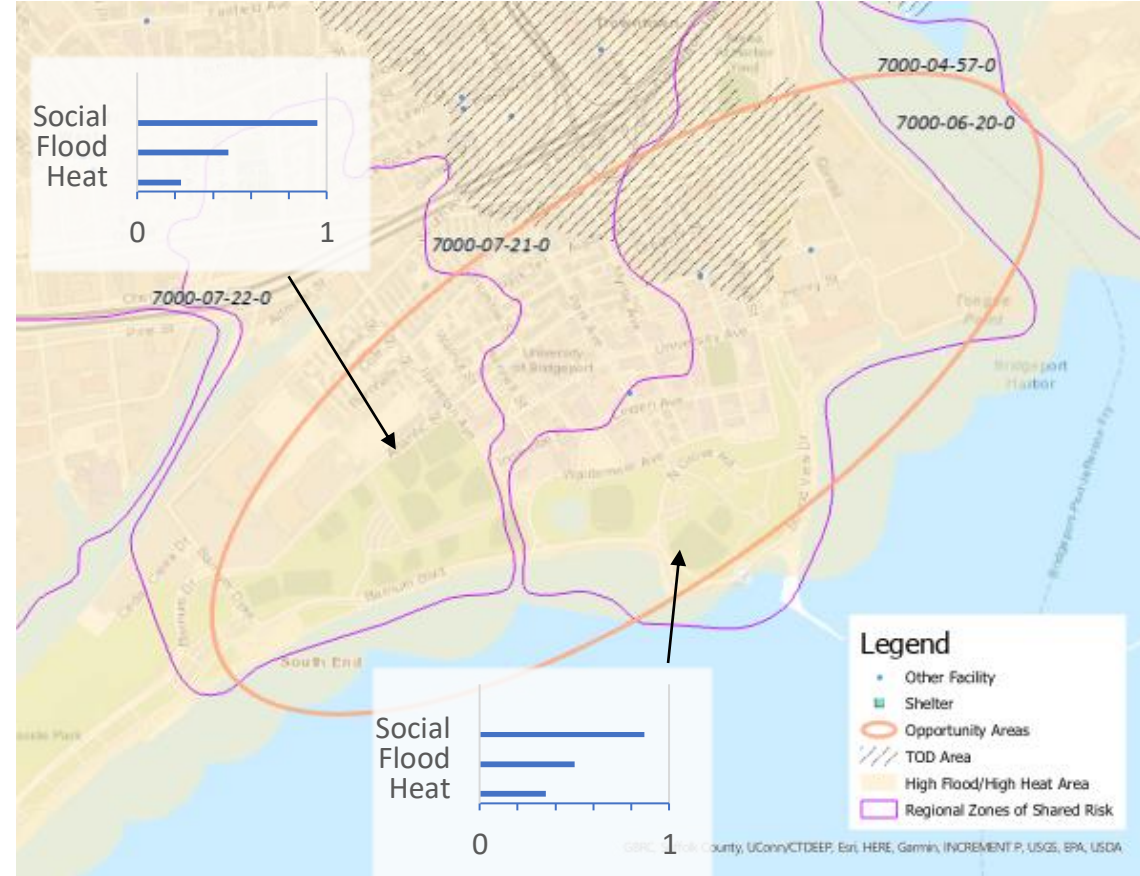
Resilient Connecticut Phase II

Potential Regional Adaptation/Resilience Opportunity Areas



Area #3
 Name: South End
 Location: Bridgeport
 Tier 2

Considerations	Characteristics of Area
Flood Vulnerability	0.48 to 0.50 (high)
Heat Vulnerability	0.35 to 0.37 (moderate-high)
Social Vulnerability	0.87 to 0.95 (high)
Zone of Shared Risk	Shoreline: 7000-07
Regional Infrastructure Present	Electric substation, law enforcement, electric transmission
Area of Planned Development Present	N/A
Federal Opportunity Zone Present	South End
Transit-Oriented Development Area	Bridgeport Station



The Rebuild By Design and Resilient Bridgeport projects are already underway in this area

Resilient Connecticut Phase II

Potential Regional Adaptation/Resilience Opportunity Areas



Area #3
Name: South End

Location: Bridgeport
Tier 2



Resilient Bridgeport – Flood Protection System and Resilience Community Center

- What are the flood-related benefits?
- What are the heat-related benefits?
- What are the benefits to vulnerable populations?

Resilient Connecticut Phase II

Potential Regional Adaptation/Resilience Opportunity Areas



Break Out



Resilient Connecticut Phase II

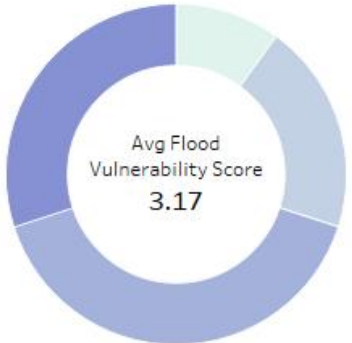
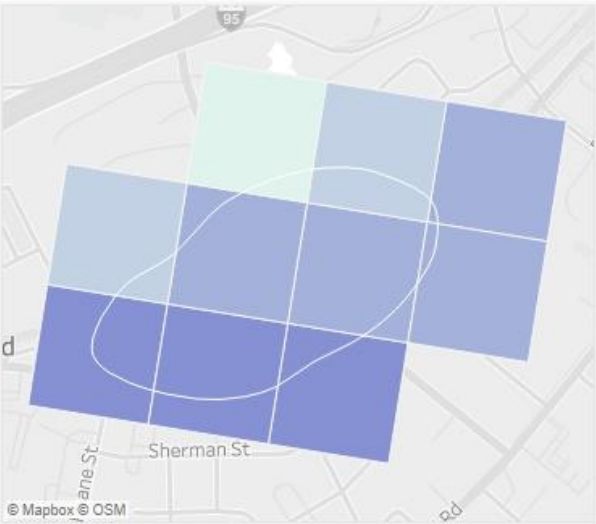
Potential Regional Adaptation/Resilience Opportunity Areas



Zone of Shared Risk:
7000-09-40-0
Town: Fairfield

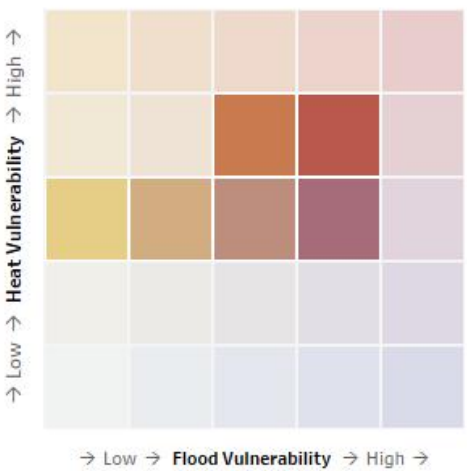
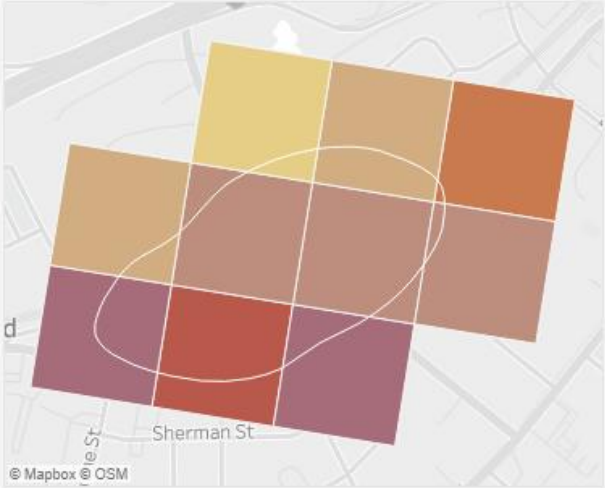


Flood Vulnerability

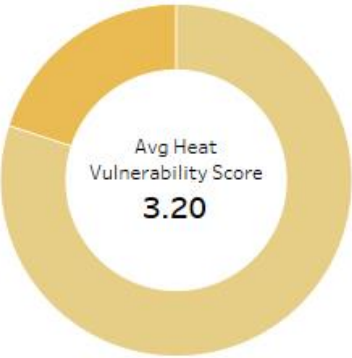
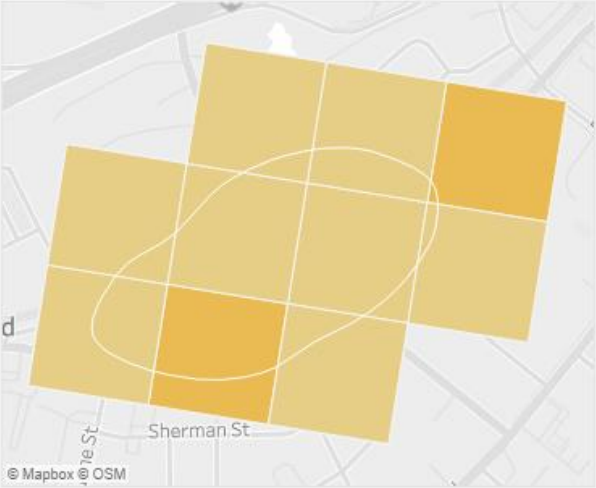


Low → Flood Vulnerability → High

Combined Vulnerability



Heat Vulnerability



Low → Heat Vulnerability → High

Resilient Connecticut Phase II

Potential Regional Adaptation/Resilience Opportunity Areas

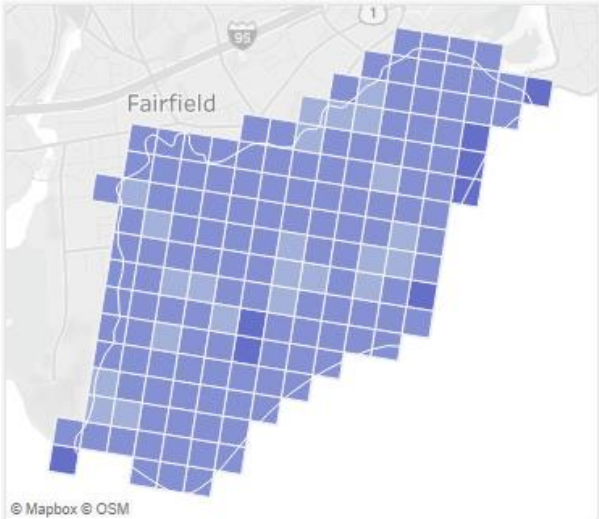


Zone of Shared Risk:
7000-09-36-0
Town: Fairfield

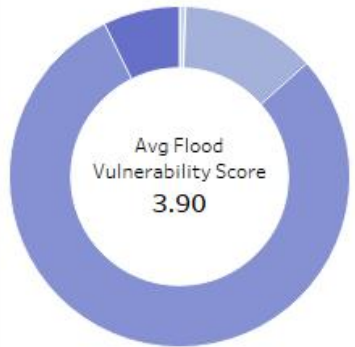


© 2021 Mapbox © OpenStreetMap

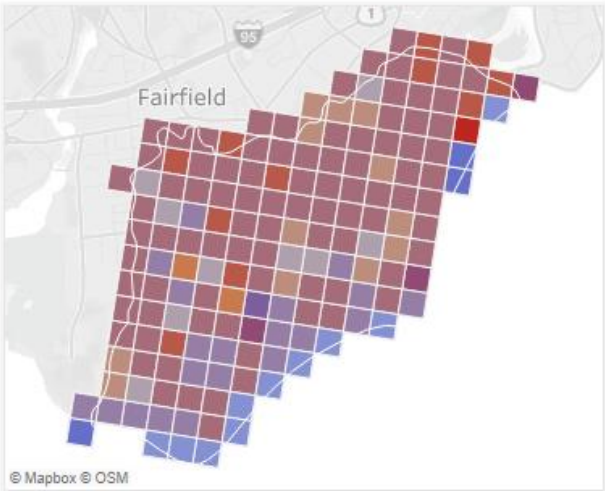
Flood Vulnerability



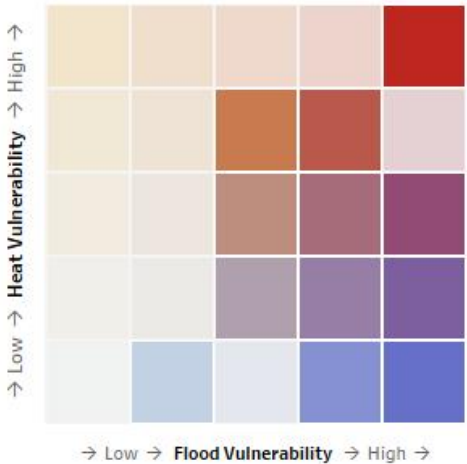
© Mapbox © OSM



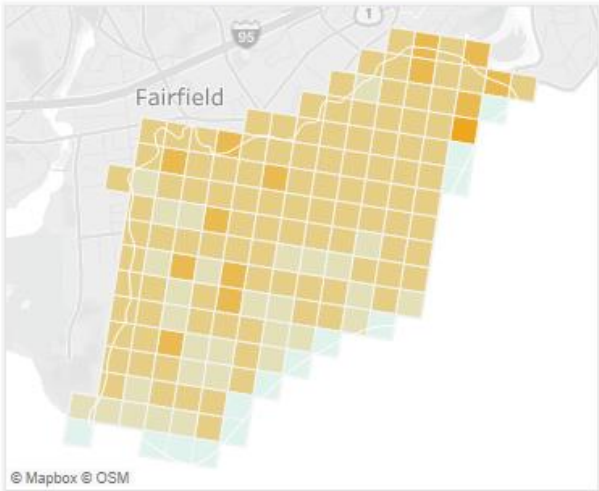
Combined Vulnerability



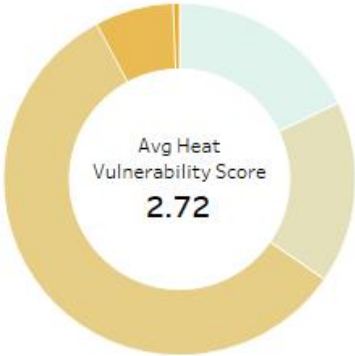
© Mapbox © OSM



Heat Vulnerability



© Mapbox © OSM



Resilient Connecticut Phase II

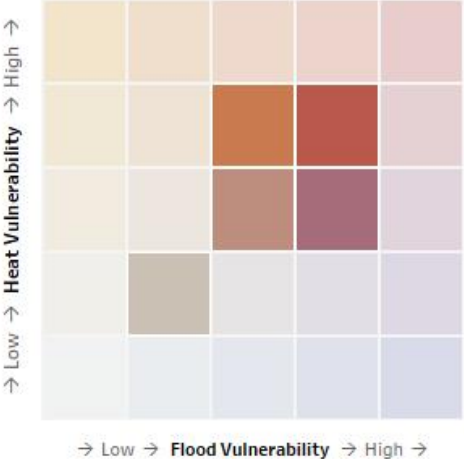
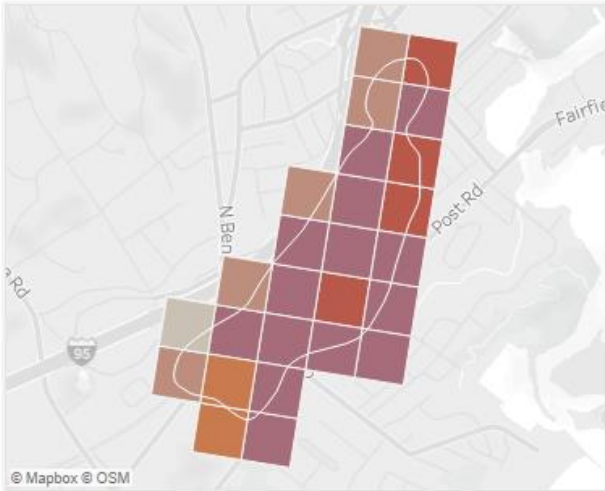
Potential Regional Adaptation/Resilience Opportunity Areas



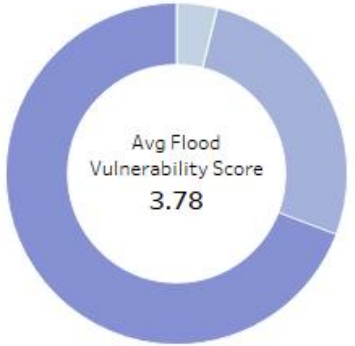
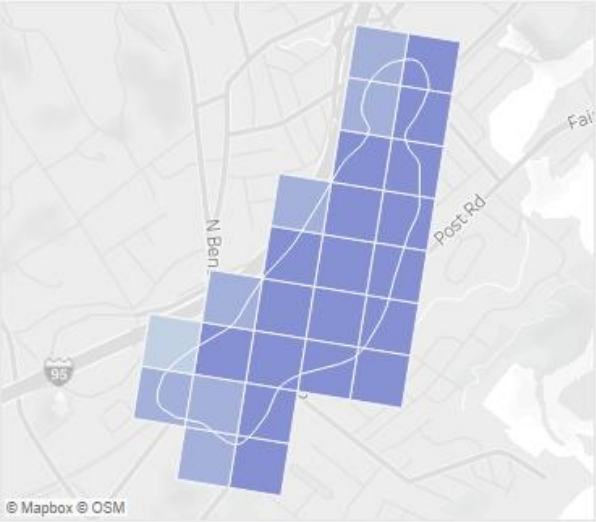
Zone of Shared Risk:
7106-04-38-0
Town: Fairfield



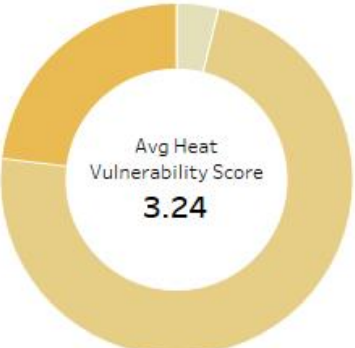
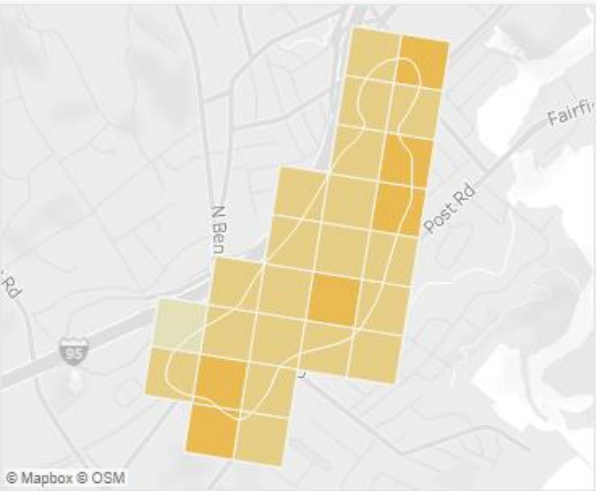
Combined Vulnerability



Flood Vulnerability



Heat Vulnerability



Resilient Connecticut Phase II

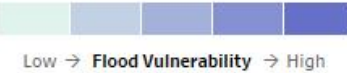
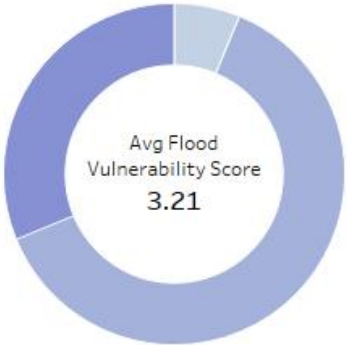
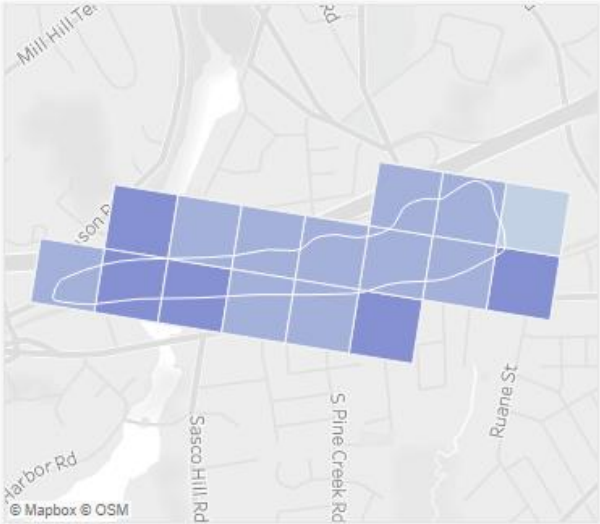
Potential Regional Adaptation/Resilience Opportunity Areas



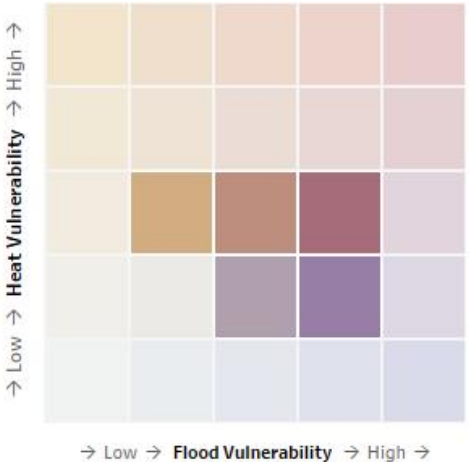
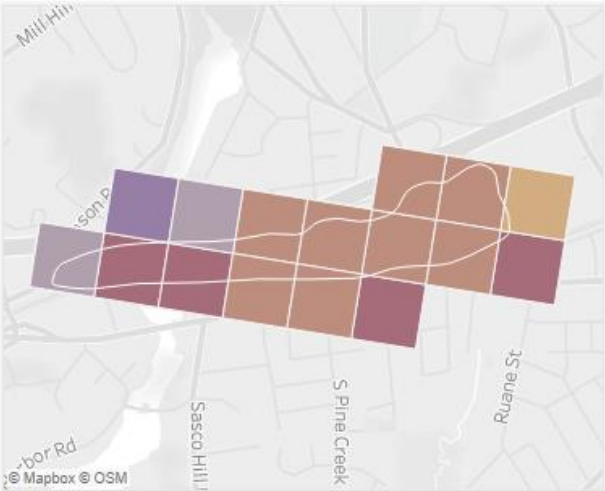
Zone of Shared Risk:
7000-09-41-0
Town: Fairfield



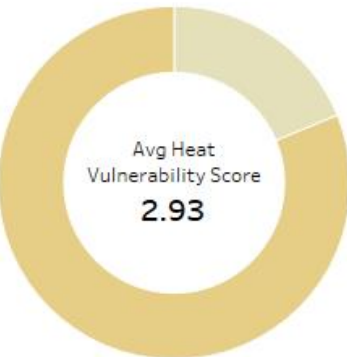
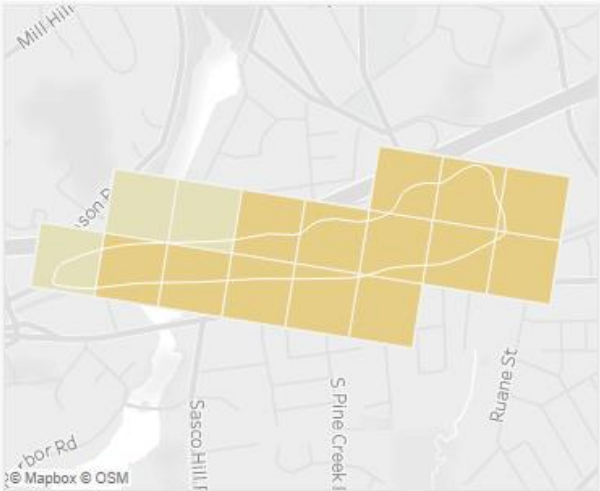
Flood Vulnerability



Combined Vulnerability



Heat Vulnerability



Resilient Connecticut Phase II

Potential Regional Adaptation/Resilience Opportunity Areas



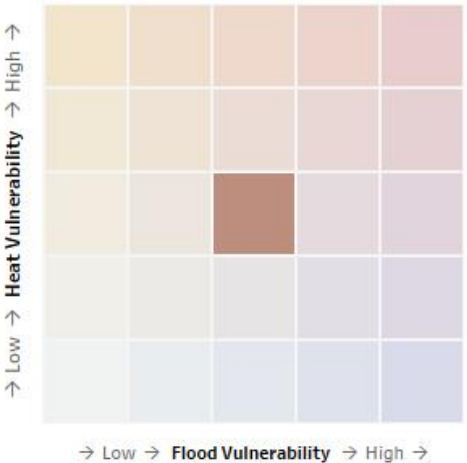
Zone of Shared Risk:
7000-09-478-0
Town: Fairfield



Flood Vulnerability



Combined Vulnerability



Heat Vulnerability



Resilient Connecticut Phase II

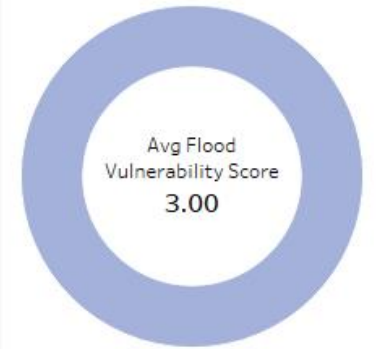
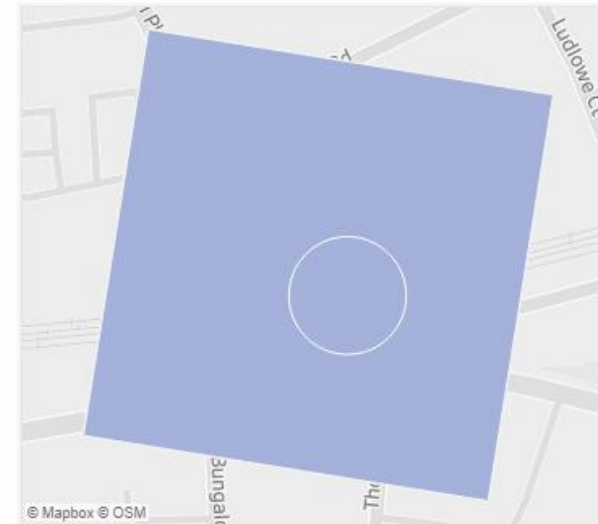
Potential Regional Adaptation/Resilience Opportunity Areas



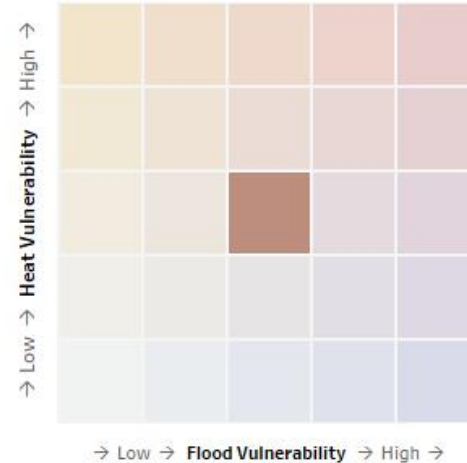
Zone of Shared Risk:
7000-09-479-0
Town: **Fairfield**



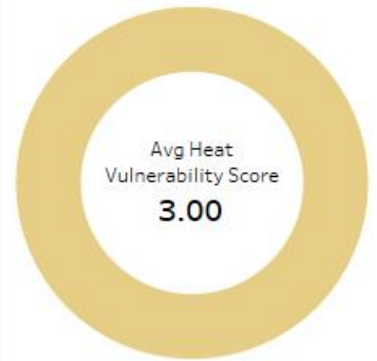
Flood Vulnerability



Combined Vulnerability



Heat Vulnerability



Resilient Connecticut Phase II

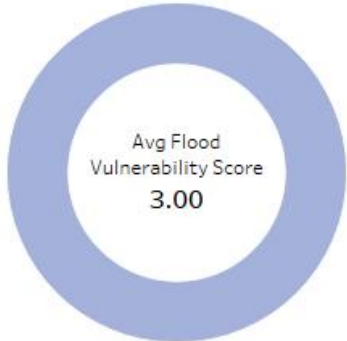
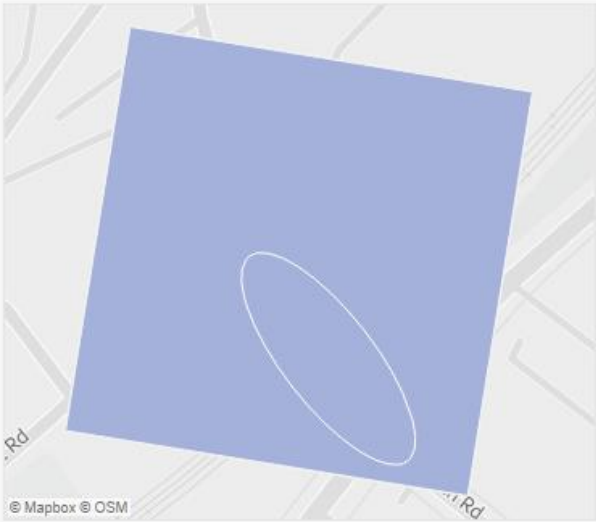
Potential Regional Adaptation/Resilience Opportunity Areas



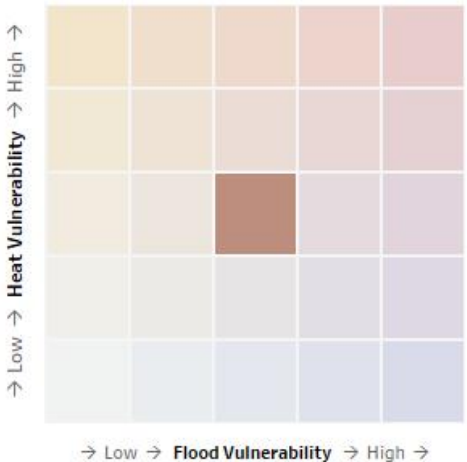
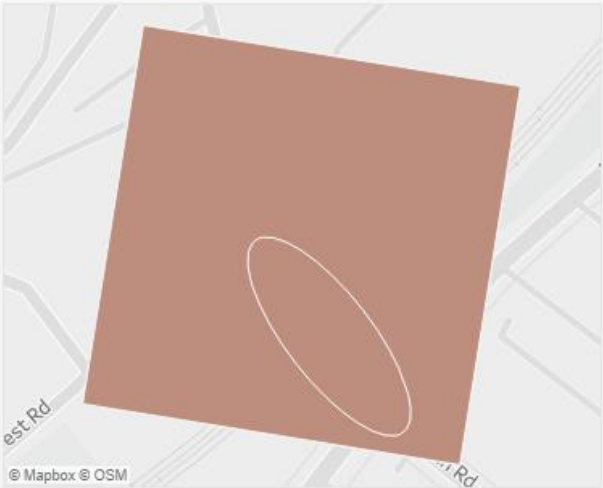
Zone of Shared Risk:
7000-09-480-0
Town: Fairfield



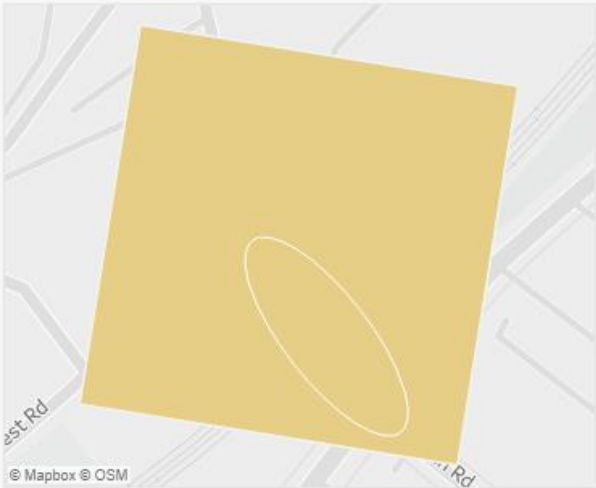
Flood Vulnerability



Combined Vulnerability



Heat Vulnerability



Resilient Connecticut Phase II

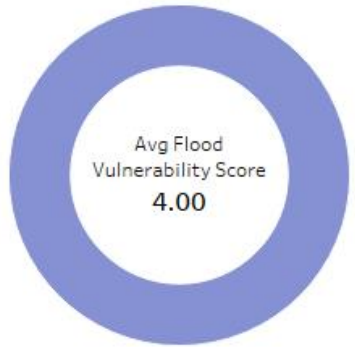
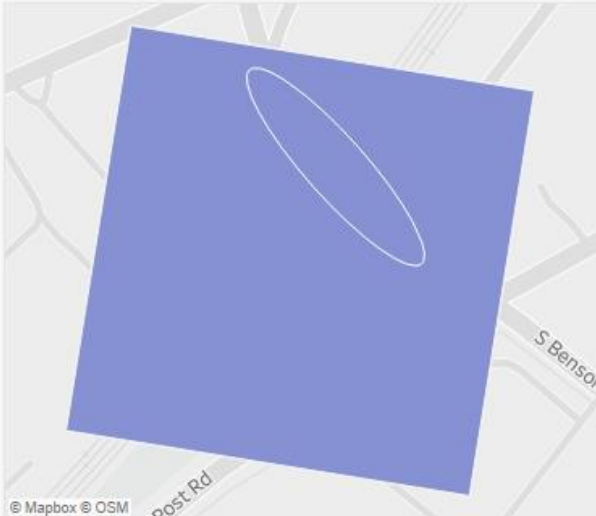
Potential Regional Adaptation/Resilience Opportunity Areas



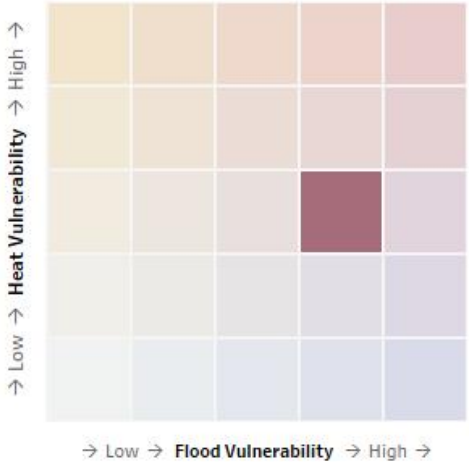
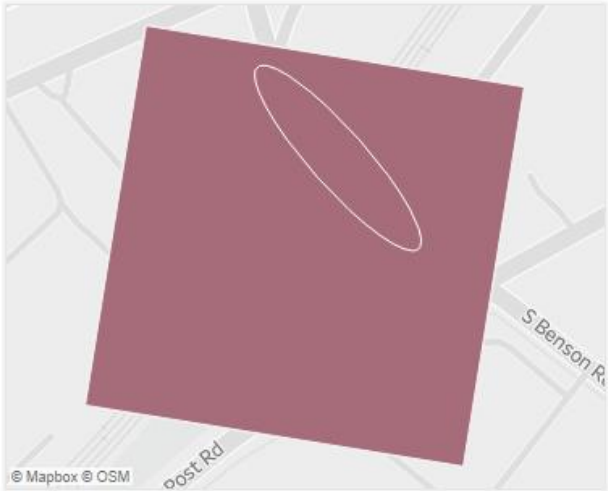
Zone of Shared Risk:
7106-04-481-0
Town: Fairfield



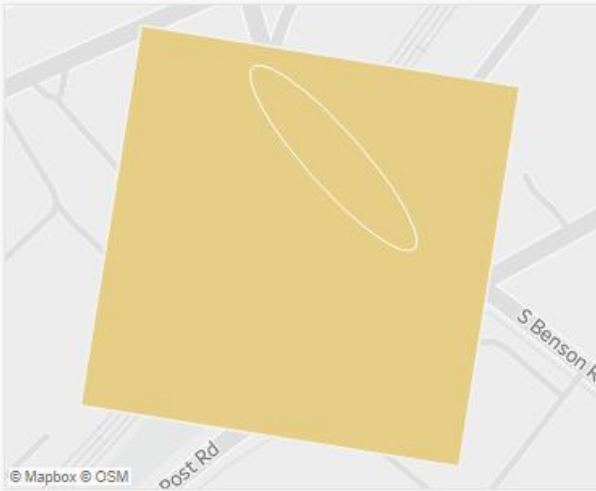
Flood Vulnerability



Combined Vulnerability



Heat Vulnerability



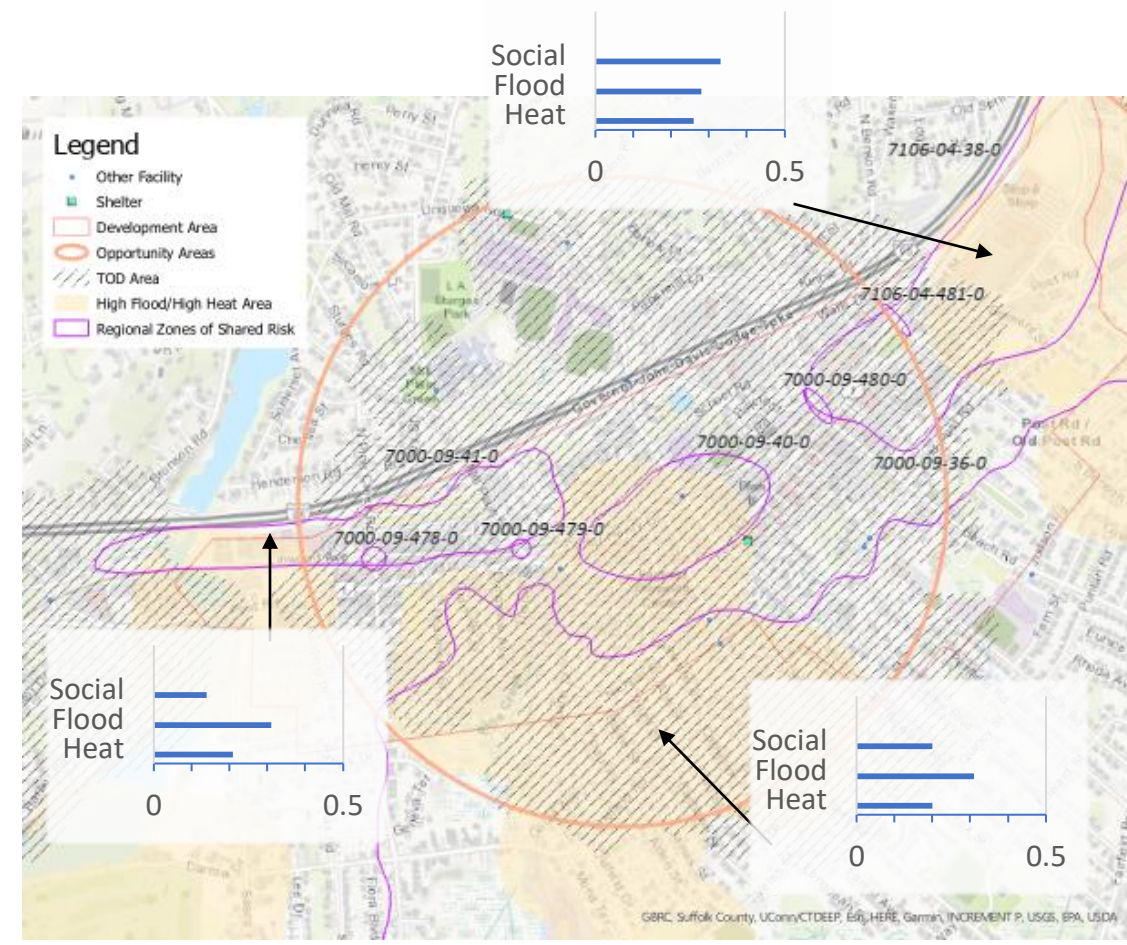
Resilient Connecticut Phase II

Potential Regional Adaptation/Resilience Opportunity Areas



Area #1 Location: Fairfield
 Name: Downtown Fairfield Tier 1

Considerations	Characteristics of Area
Flood Vulnerability	0.23 to 0.31 (moderate-high)
Heat Vulnerability	0.20 to 0.26 (moderate)
Social Vulnerability	0.14 to 0.33 (moderate-low)
Zones of Shared Risk	Shoreline: 7000-09 Ash Creek: 7106-04
Regional Infrastructure Present	MetroNorth/Amtrak, law enforcement, wastewater treatment plant, museums, I-95 and Route 1
Area of Planned Development Present	Downtown Fairfield
Federal Opportunity Zone Present	N/A
Transit-Oriented Development Area	Fairfield Station



Resilient Connecticut Phase II

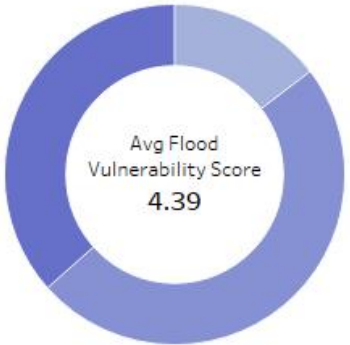
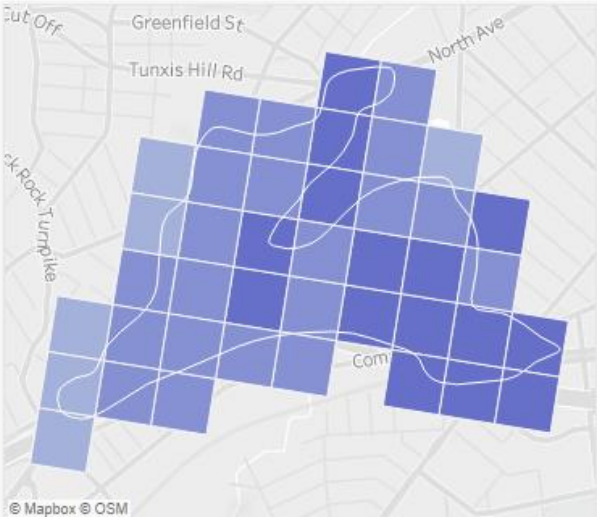
Potential Regional Adaptation/Resilience Opportunity Areas



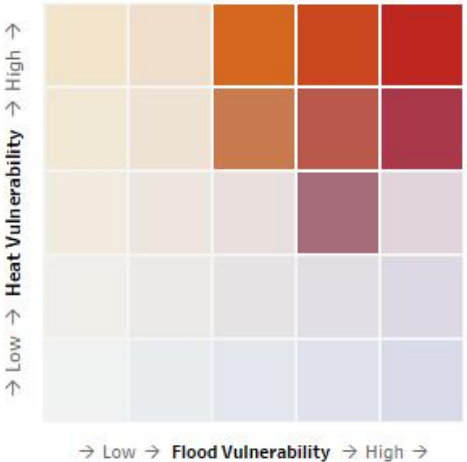
Zone of Shared Risk:
7106-00-27-0
Town: **Bridgeport**



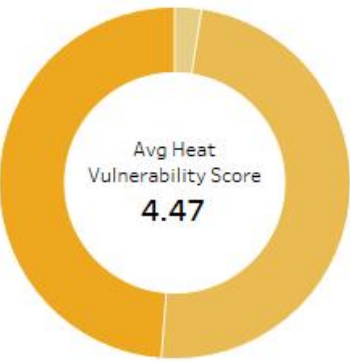
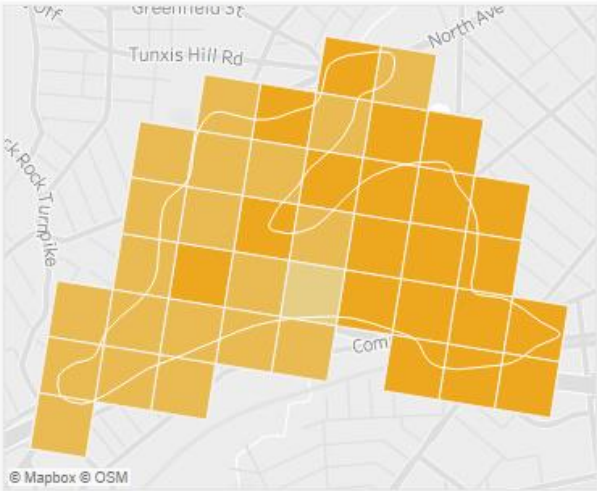
Flood Vulnerability



Combined Vulnerability



Heat Vulnerability



Resilient Connecticut Phase II

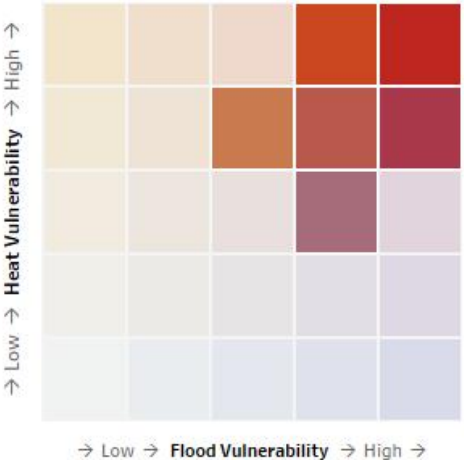
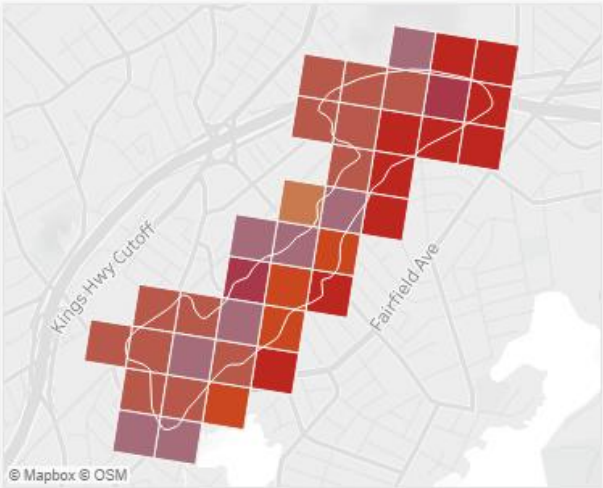
Potential Regional Adaptation/Resilience Opportunity Areas



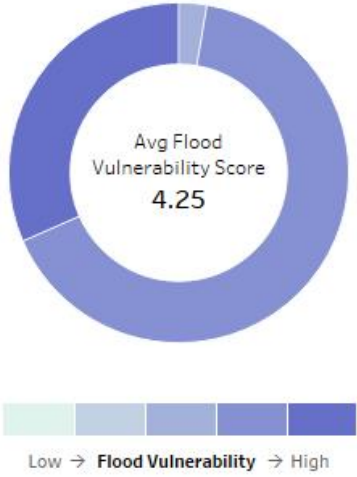
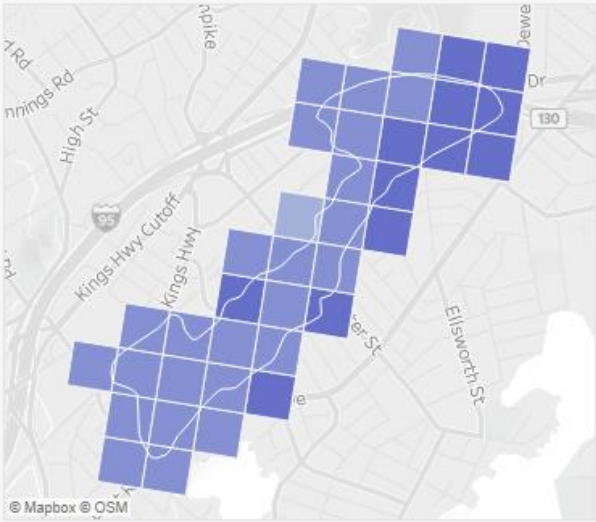
Zone of Shared Risk:
7106-00-26-0
Town: Bridgeport



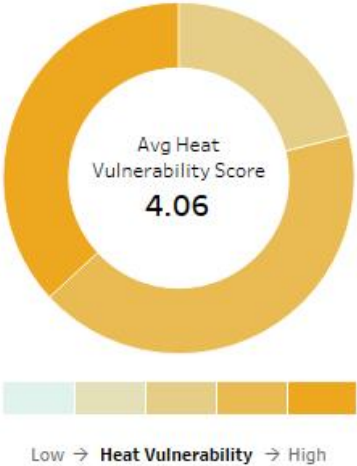
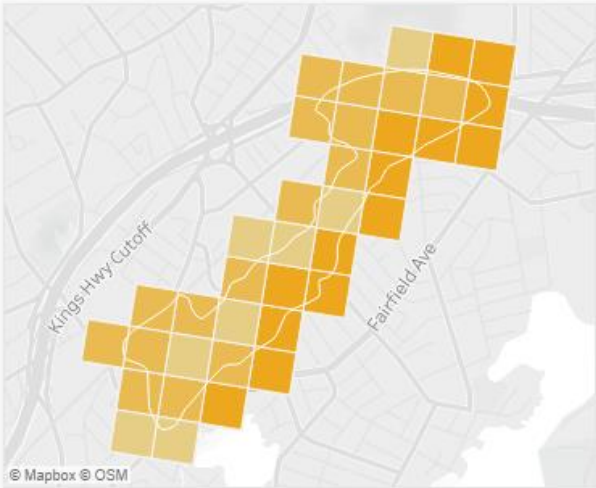
Combined Vulnerability



Flood Vulnerability



Heat Vulnerability



Resilient Connecticut Phase II

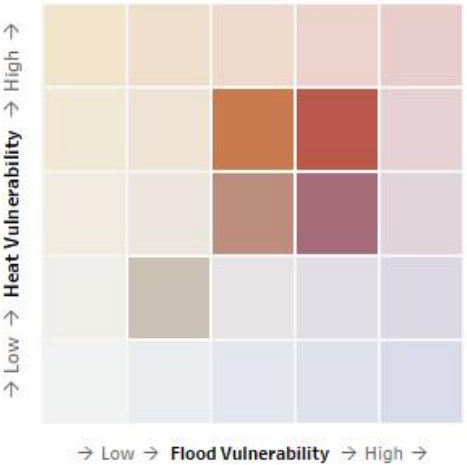
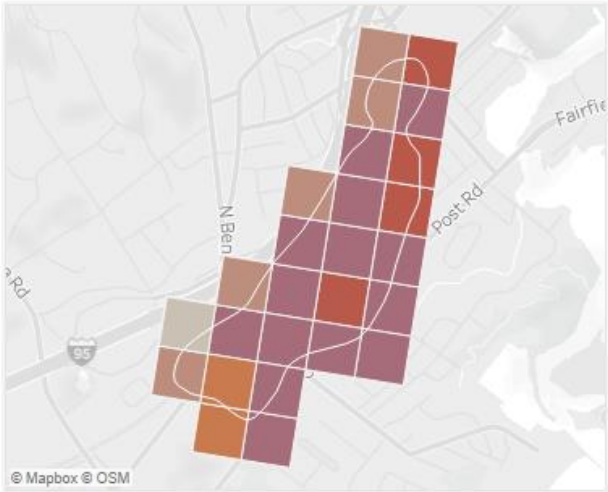
Potential Regional Adaptation/Resilience Opportunity Areas



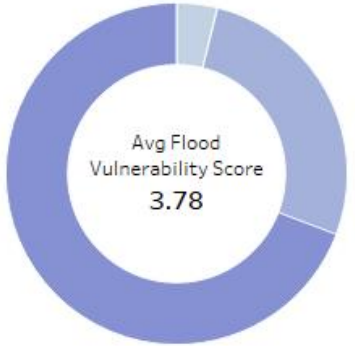
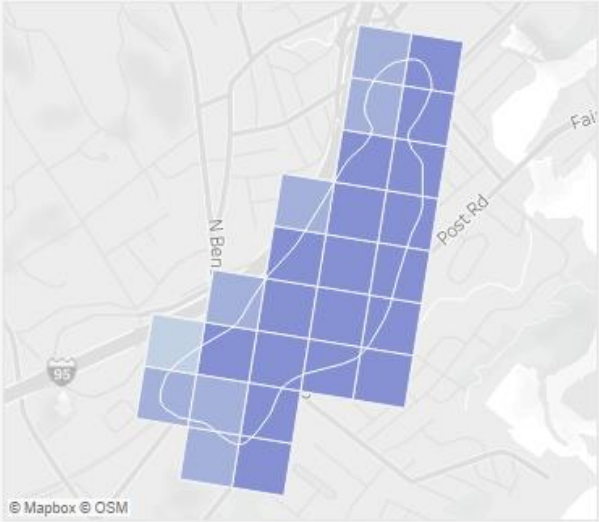
Zone of Shared Risk:
7106-04-38-0
Town: Fairfield



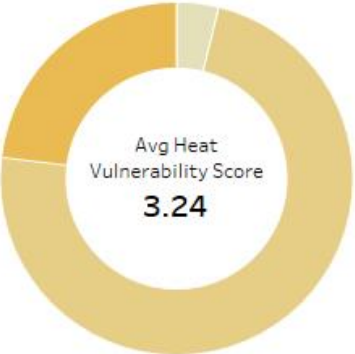
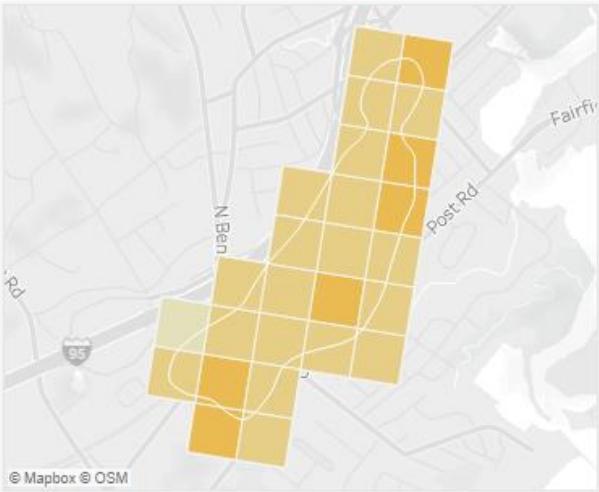
Combined Vulnerability



Flood Vulnerability



Heat Vulnerability



Resilient Connecticut Phase II

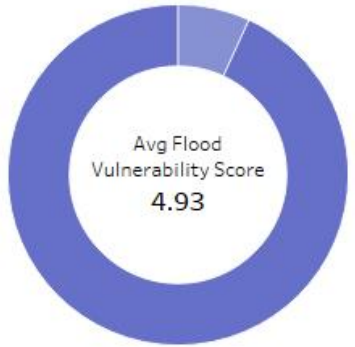
Potential Regional Adaptation/Resilience Opportunity Areas



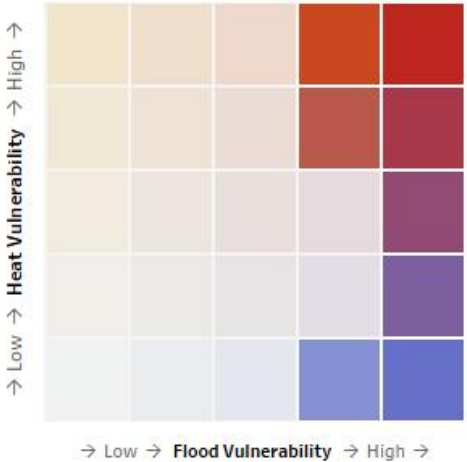
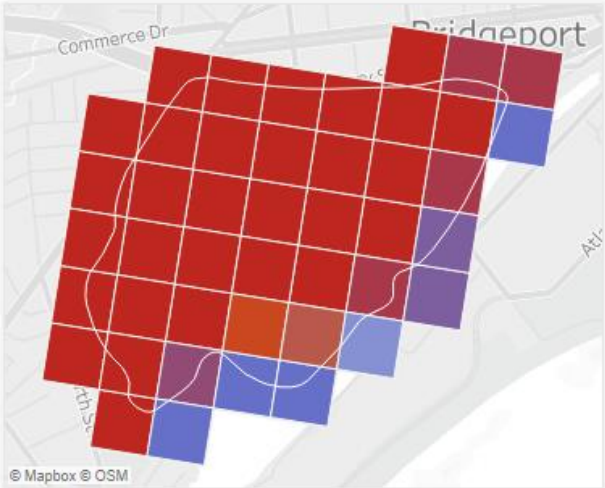
Zone of Shared Risk:
7000-07-22-0
Town: **Bridgeport**



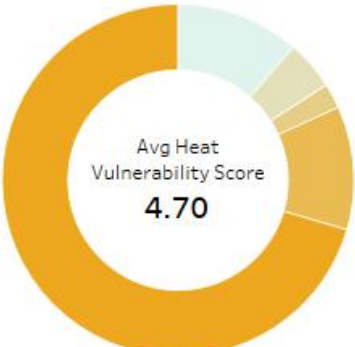
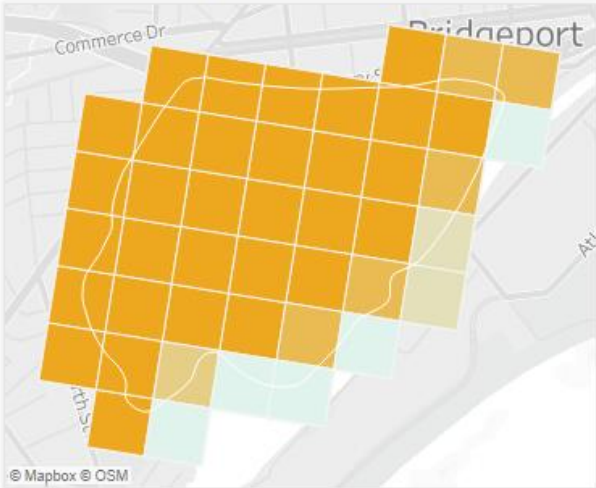
Flood Vulnerability



Combined Vulnerability



Heat Vulnerability



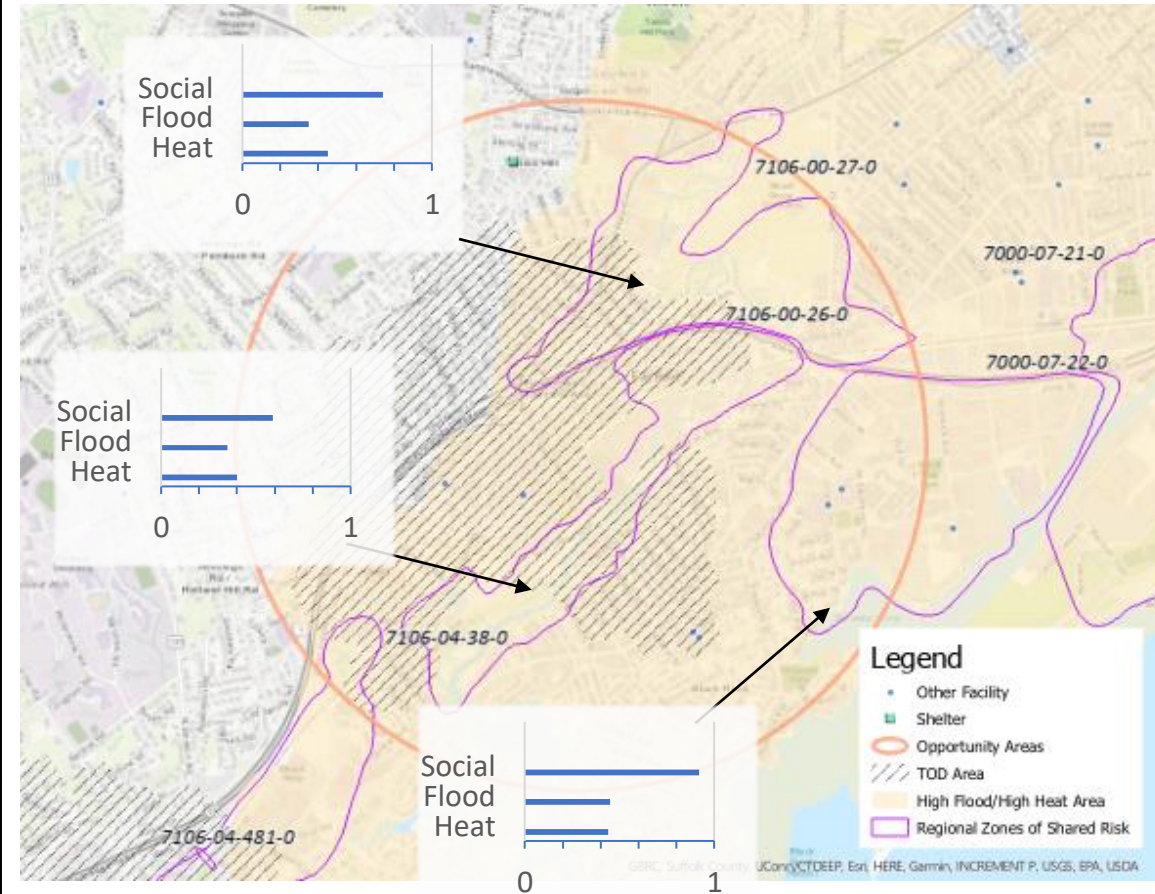
Resilient Connecticut Phase II

Potential Regional Adaptation/Resilience Opportunity Areas



Area #2
 Name: Fairfield Metro
 Location: Fairfield/Bridgeport
 Tier 1

Considerations	Characteristics of Area
Flood Vulnerability	0.35 to 0.45 (moderate to high)
Heat Vulnerability	0.40 to 0.45 (high)
Social Vulnerability	0.59 to 0.92 (moderate to high)
Zone of Shared Risk	Ash Creek: 7106-04 and 7106-00 Shoreline: 7000-07
Regional Infrastructure Present	MetroNorth/Amtrak, electric substation, biodiesel plant, I-95, wastewater treatment plant
Area of Planned Development Present	Revitalization of Kings Highway section in Fairfield, West End Redevelopment in Bridgeport
Federal Opportunity Zone Present	N/A
Transit-Oriented Development Area	Fairfield Metro Station



Resilient Connecticut Phase II

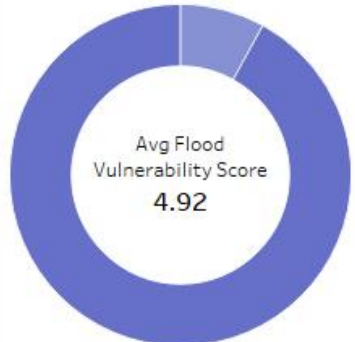
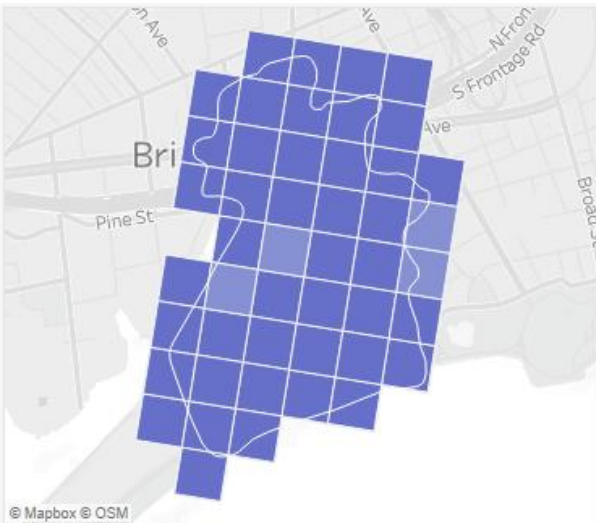
Potential Regional Adaptation/Resilience Opportunity Areas



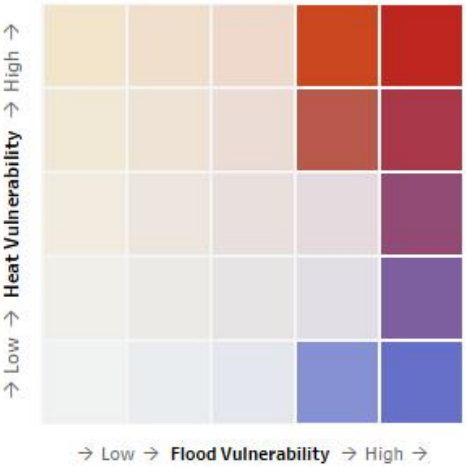
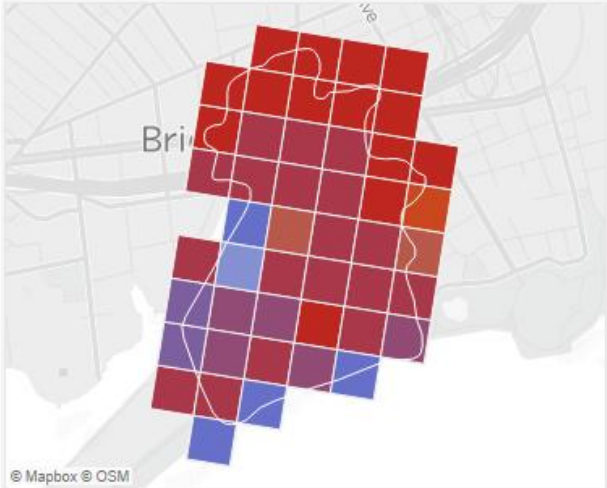
Zone of Shared Risk:
7000-07-21-0
Town: **Bridgeport**



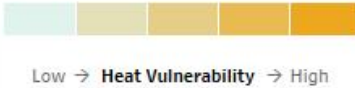
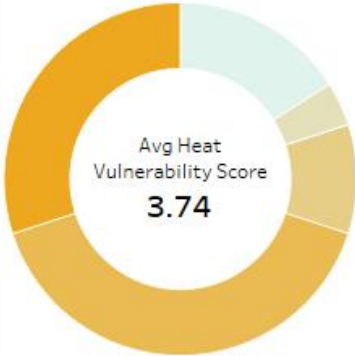
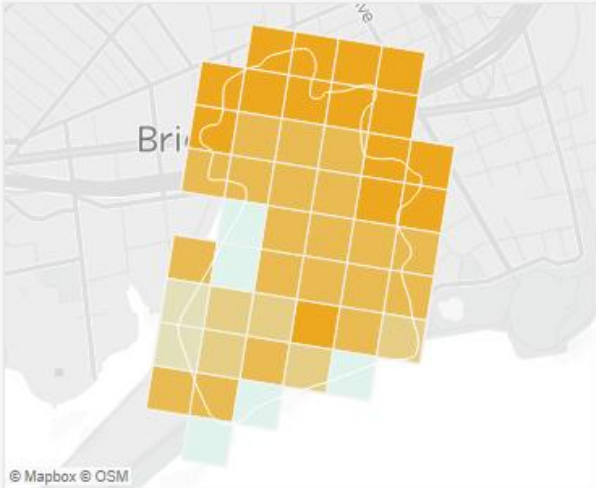
Flood Vulnerability



Combined Vulnerability



Heat Vulnerability



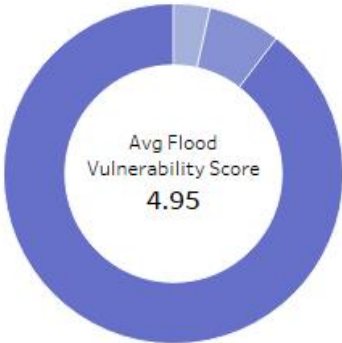
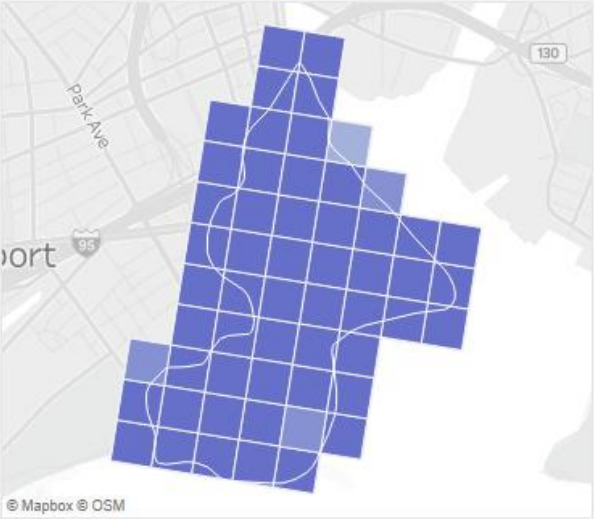
Resilient Connecticut Phase II

Potential Regional Adaptation/Resilience Opportunity Areas

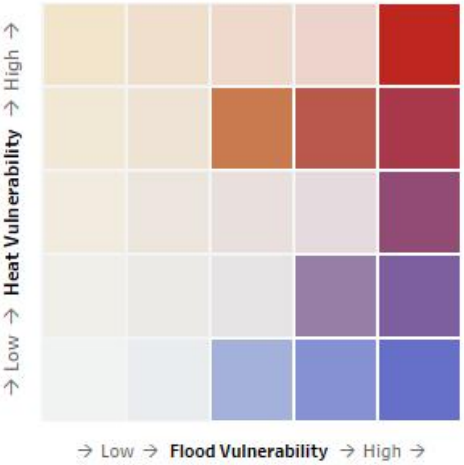
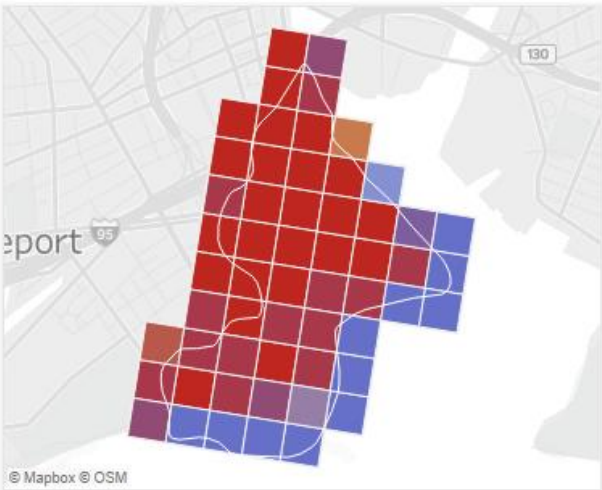
Zone of Shared Risk:
7000-06-20-0
Town: Bridgeport



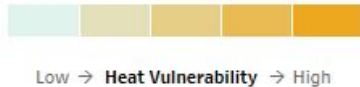
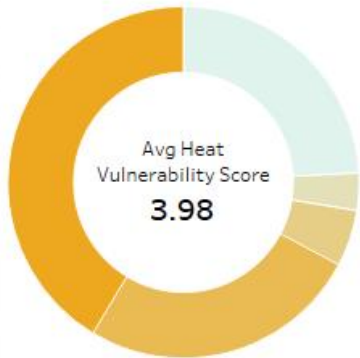
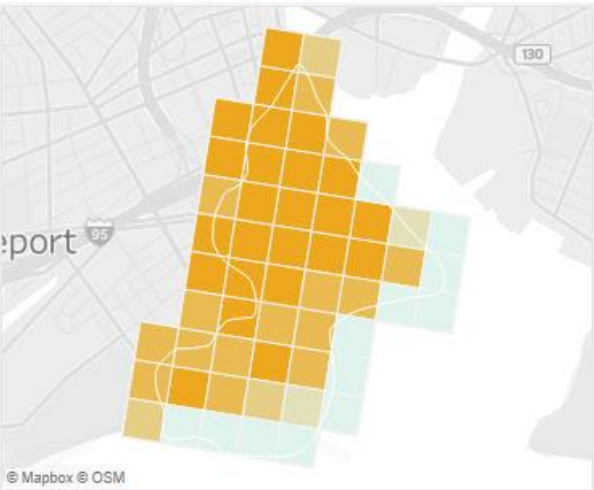
Flood Vulnerability



Combined Vulnerability



Heat Vulnerability



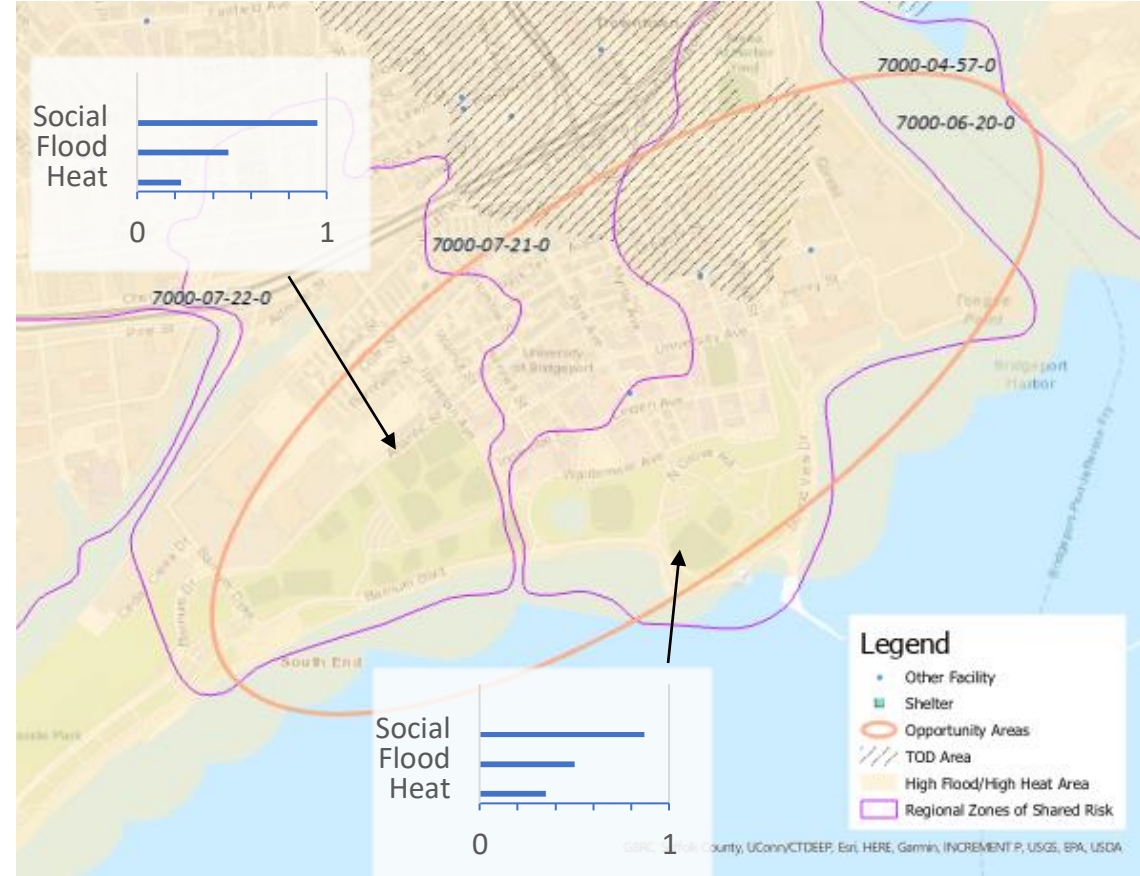
Resilient Connecticut Phase II

Potential Regional Adaptation/Resilience Opportunity Areas



Area #3
 Name: South End
 Location: Bridgeport
 Tier 2

Considerations	Characteristics of Area
Flood Vulnerability	0.48 to 0.50 (high)
Heat Vulnerability	0.35 to 0.37 (moderate-high)
Social Vulnerability	0.87 to 0.95 (high)
Zone of Shared Risk	Shoreline: 7000-07
Regional Infrastructure Present	Electric substation, law enforcement, electric transmission
Area of Planned Development Present	N/A
Federal Opportunity Zone Present	South End
Transit-Oriented Development Area	Bridgeport Station



The Rebuild By Design and Resilient Bridgeport projects are already underway in this area

Resilient Connecticut Phase II

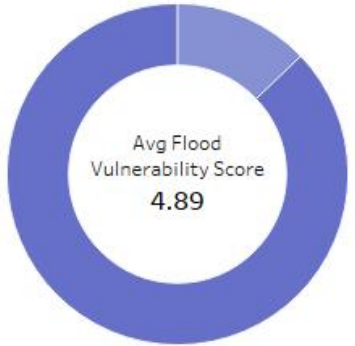
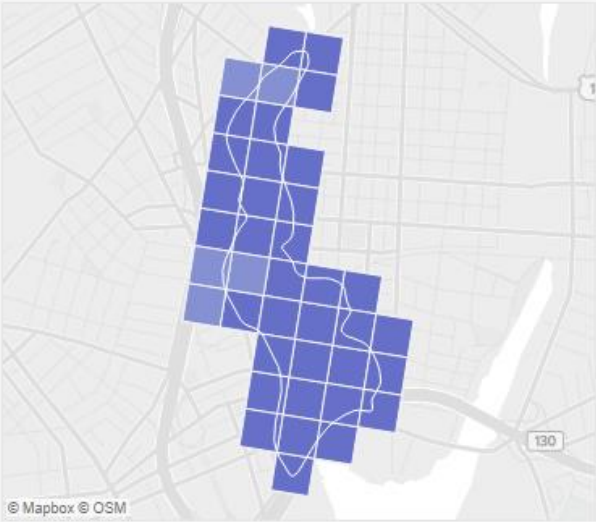
Potential Regional Adaptation/Resilience Opportunity Areas



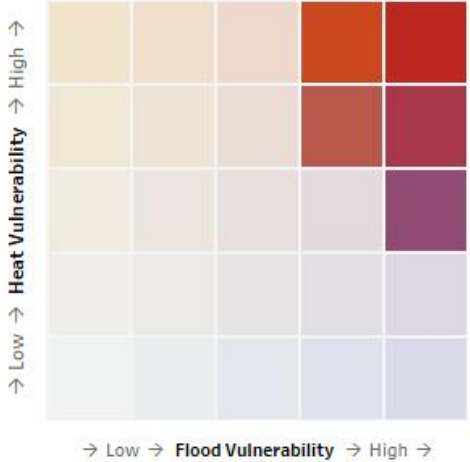
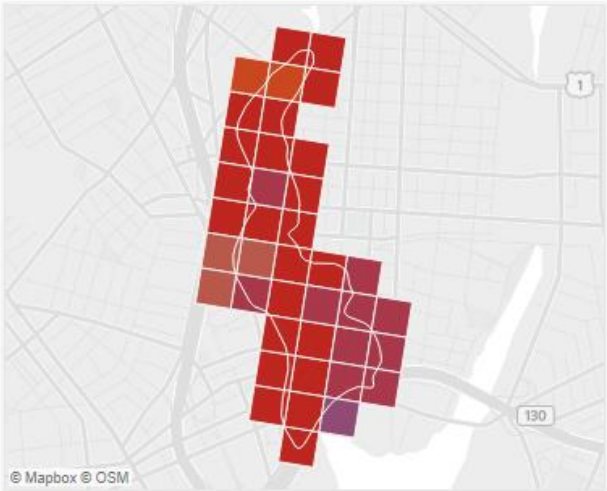
Zone of Shared Risk:
7105-00-31-0
Town: Bridgeport



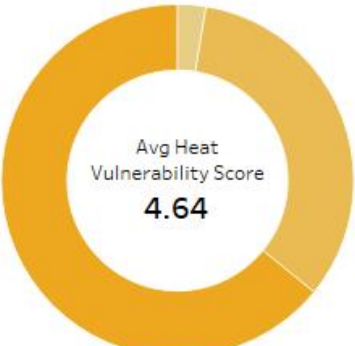
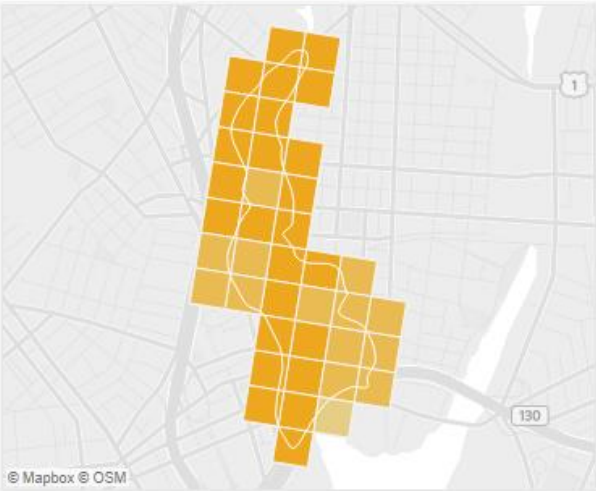
Flood Vulnerability



Combined Vulnerability



Heat Vulnerability



Resilient Connecticut Phase II

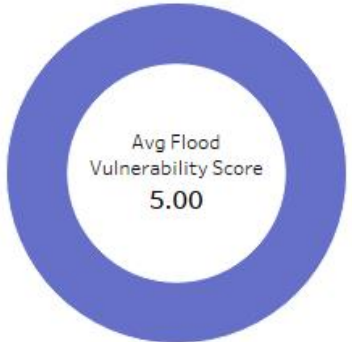
Potential Regional Adaptation/Resilience Opportunity Areas



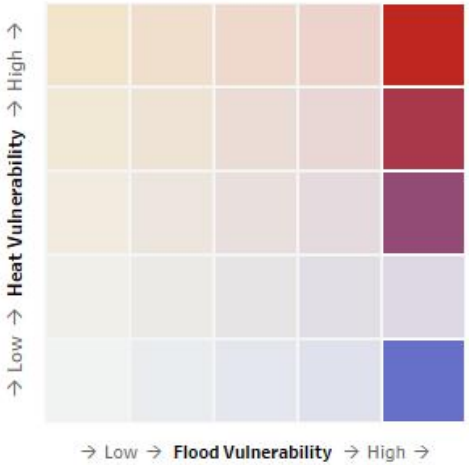
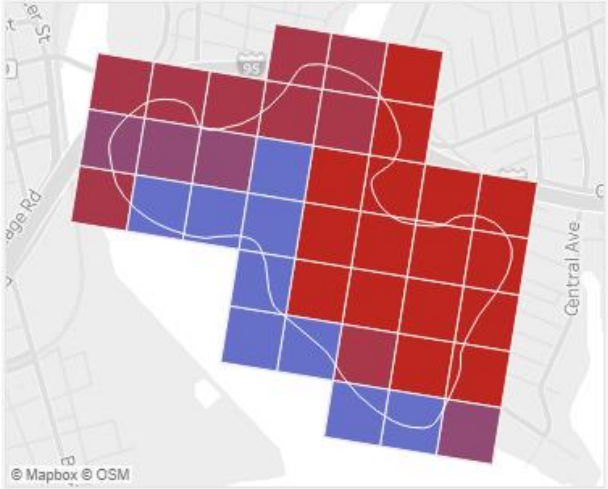
Zone of Shared Risk:
7000-04-57-0
Town: Bridgeport



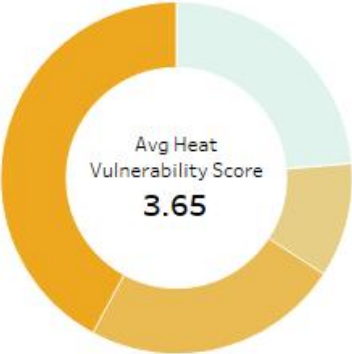
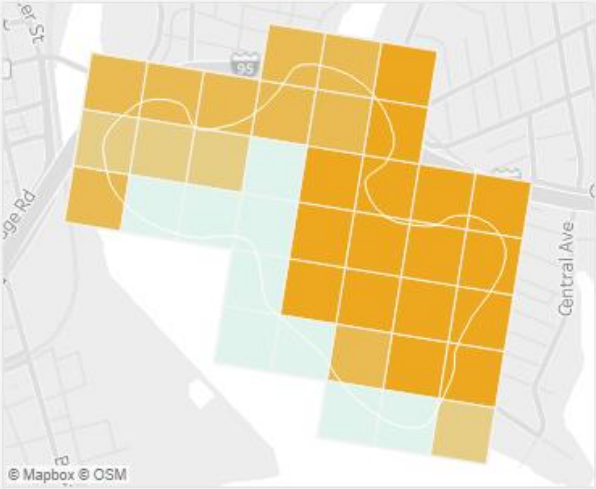
Flood Vulnerability



Combined Vulnerability



Heat Vulnerability



Resilient Connecticut Phase II

Potential Regional Adaptation/Resilience Opportunity Areas



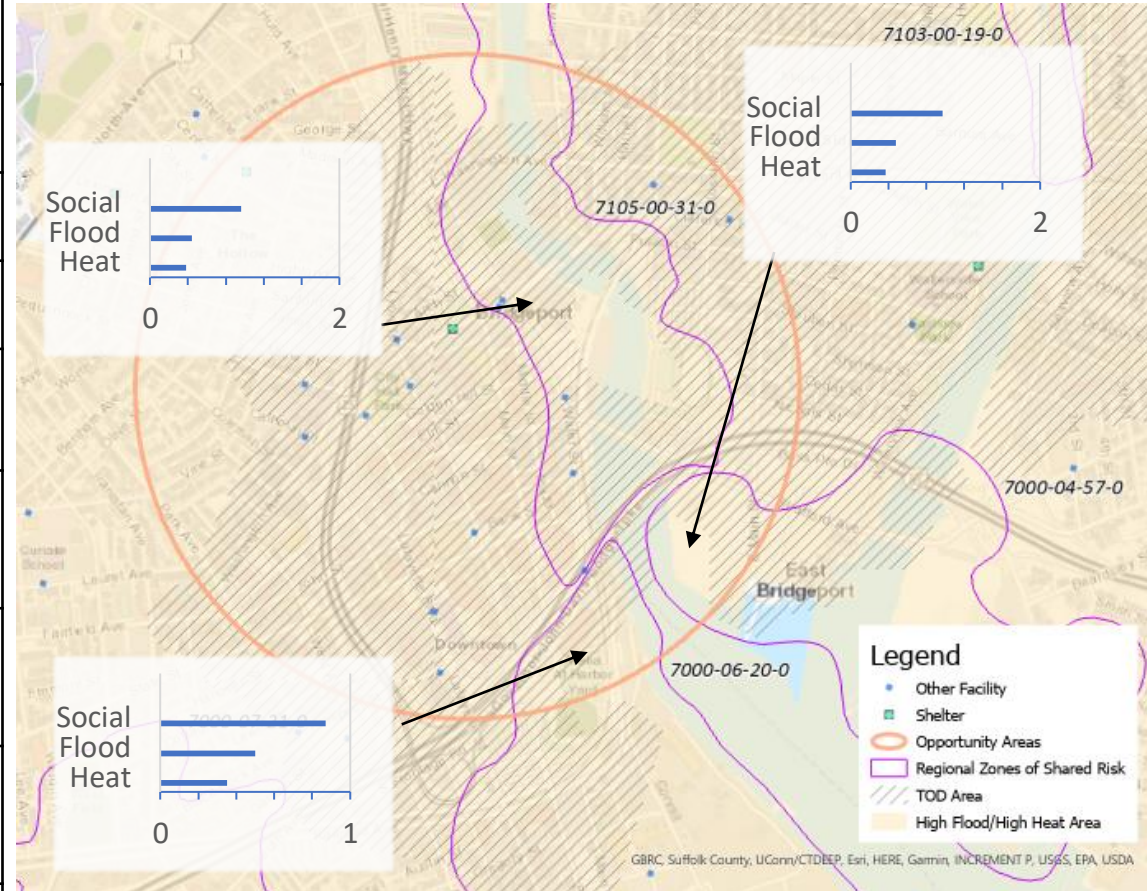
Area #4

Location: Bridgeport

Name: Downtown

Tier 1

Considerations	Characteristics of Area
Flood Vulnerability	0.44 to 0.50 (high)
Heat Vulnerability	0.35 to 0.38 (moderate-high)
Social Vulnerability	0.87 to 0.97 (high)
Zone of Shared Risk	Pequonnock River: 7105-00 Shoreline: 7000-06 & 7000-04
Regional Infrastructure Present	Electric substation, law enforcement, power plant, I-95, Route 8
Area of Planned Development Present	Waterfront Revitalization
Federal Opportunity Zone Present	Downtown
Transit-Oriented Development Area	Bridgeport Station



Resilient Connecticut Phase II

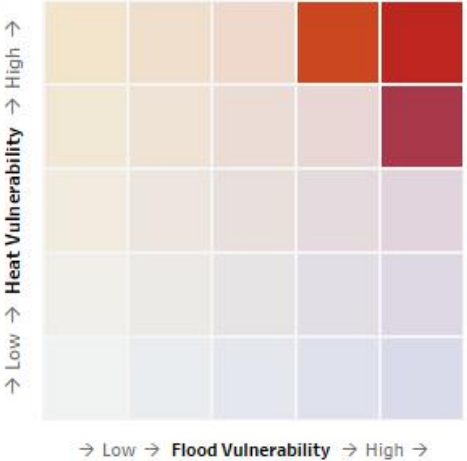
Potential Regional Adaptation/Resilience Opportunity Areas



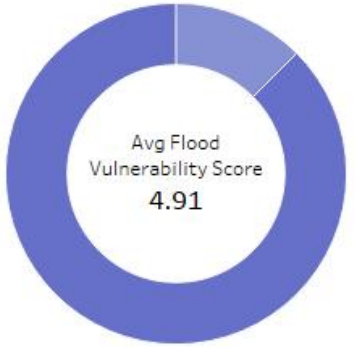
Zone of Shared Risk:
7103-00-19-0
Town: **Bridgeport**



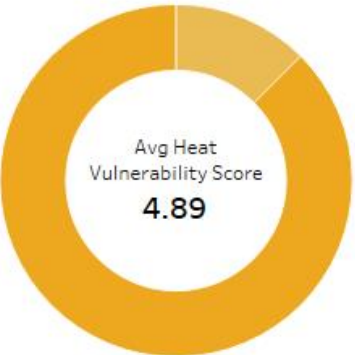
Combined Vulnerability



Flood Vulnerability



Heat Vulnerability



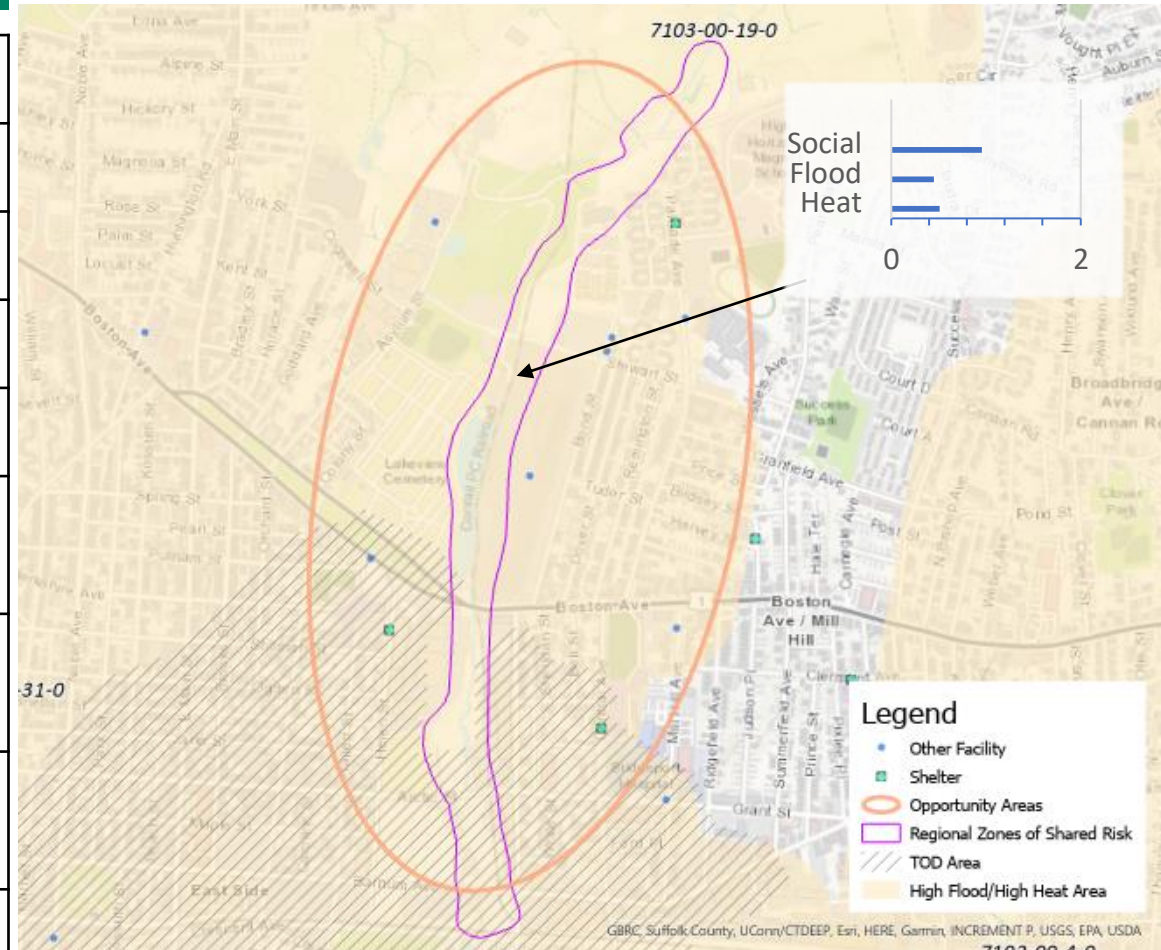
Resilient Connecticut Phase II

Potential Regional Adaptation/Resilience Opportunity Areas



Area #5
 Name: East Bridgeport
 Location: Bridgeport
 Tier 2

Considerations	Characteristics of Area
Flood Vulnerability	0.45 (high)
Heat Vulnerability	0.51 (high)
Social Vulnerability	0.96 (high)
Zone of Shared Risk	Yellow Mill Channel: 7103-00
Regional Infrastructure Present	Substation, Metro-North/Amtrak, Boston Post Road
Area of Planned Development Present	N/A
Federal Opportunity Zone Present	East Side
Transit-Oriented Development Area	Potential Barnum Station



GBRC, Suffolk County, UConn/CTDEEP, Esri, HERE, Garmin, INCREMENT P, USGS, EPA, USDA
 7103-00-1-0

Resilient Connecticut Phase II

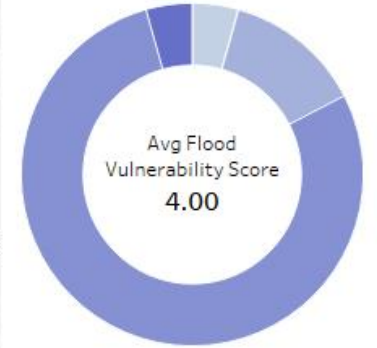
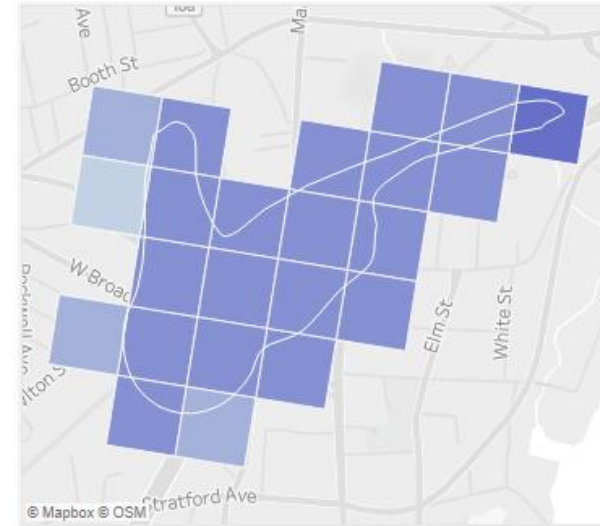
Potential Regional Adaptation/Resilience Opportunity Areas



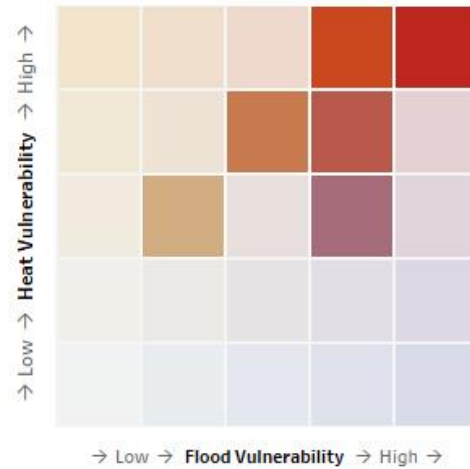
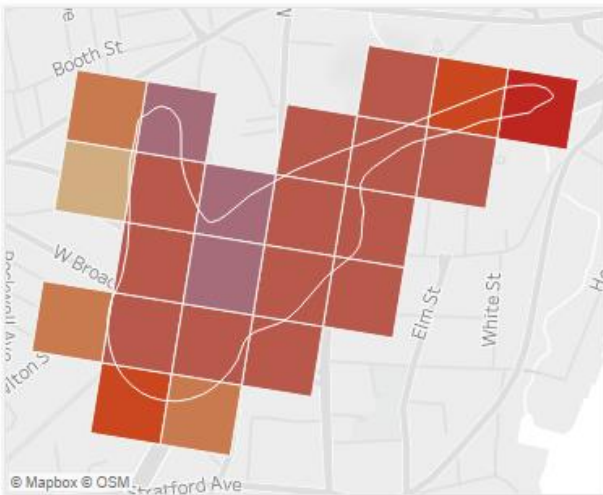
Zone of Shared Risk:
6000-88-59-0
Town: Stratford



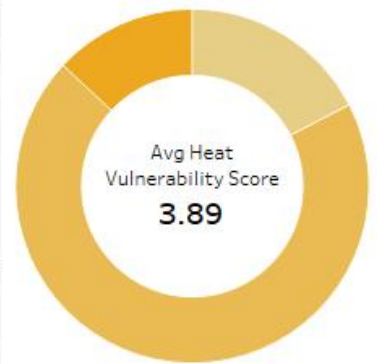
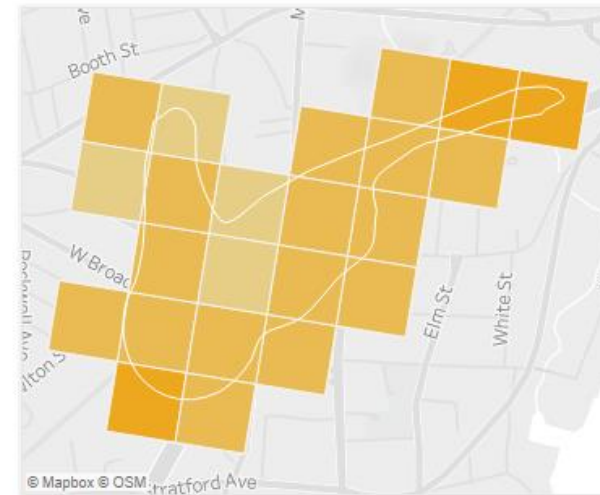
Flood Vulnerability



Combined Vulnerability



Heat Vulnerability



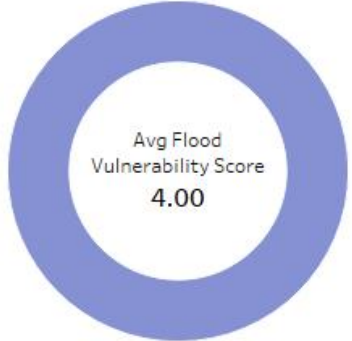
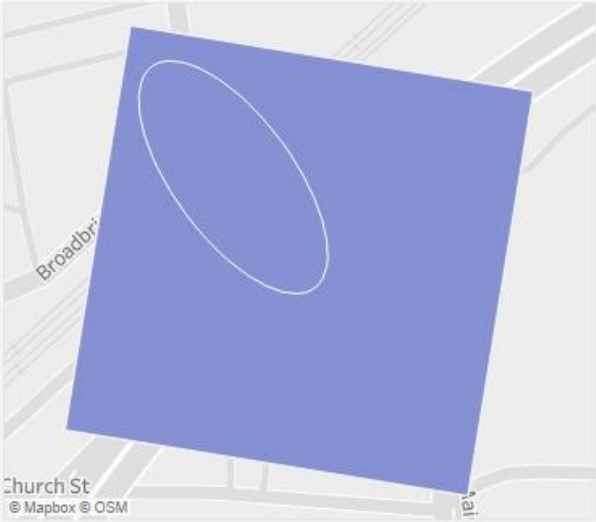
Resilient Connecticut Phase II

Potential Regional Adaptation/Resilience Opportunity Areas

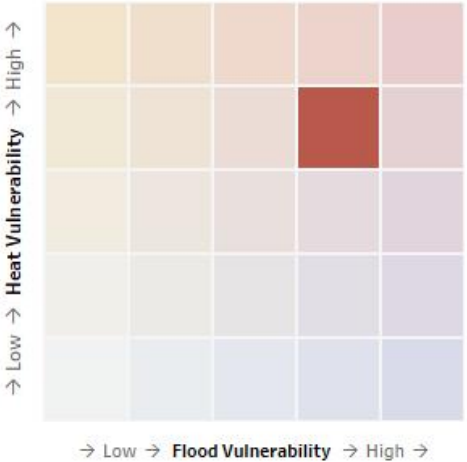
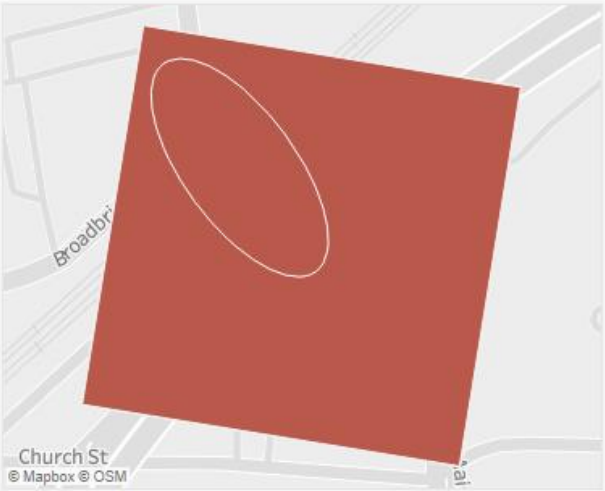
Zone of Shared Risk:
 6000-88-486-0
 Town: Stratford



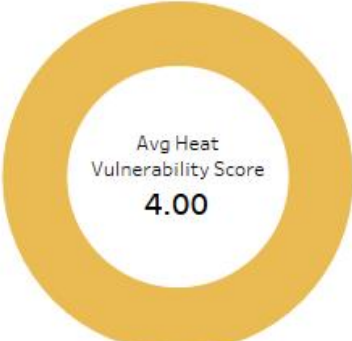
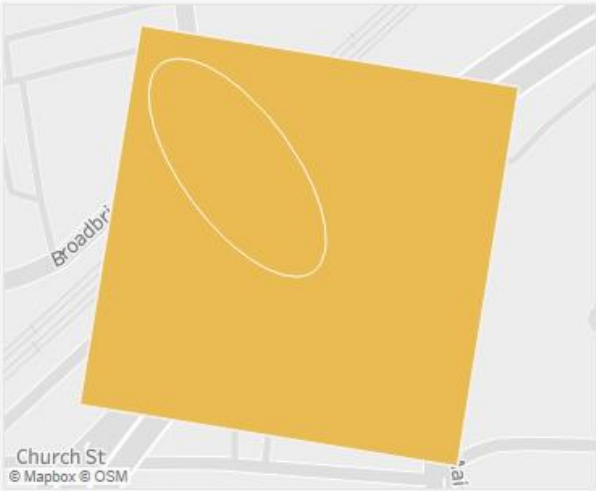
Flood Vulnerability



Combined Vulnerability



Heat Vulnerability



Resilient Connecticut Phase II

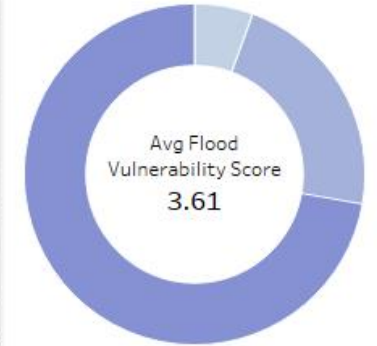
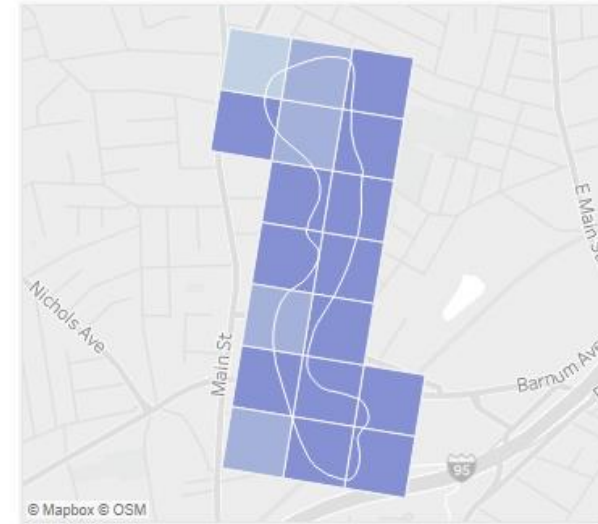
Potential Regional Adaptation/Resilience Opportunity Areas



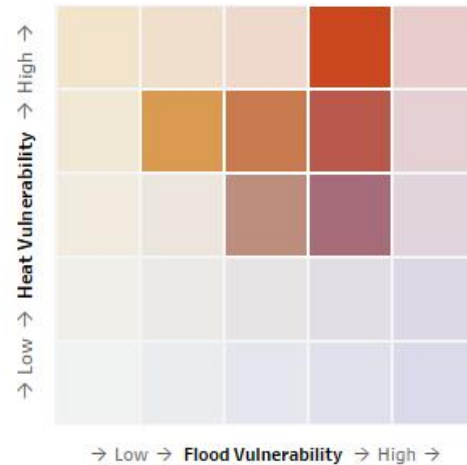
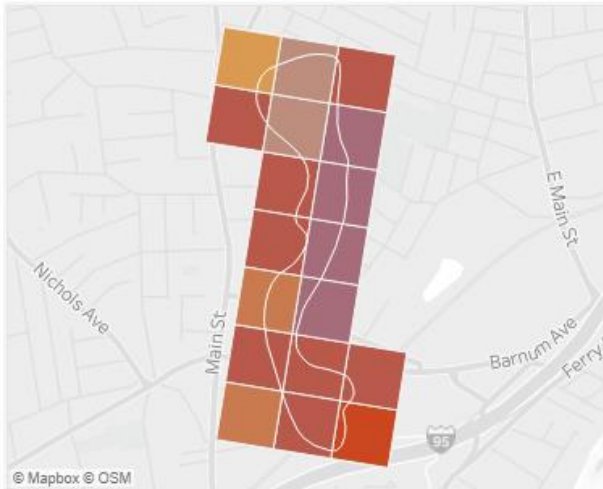
Zone of Shared Risk:
6000-88-60-0
Town: Stratford



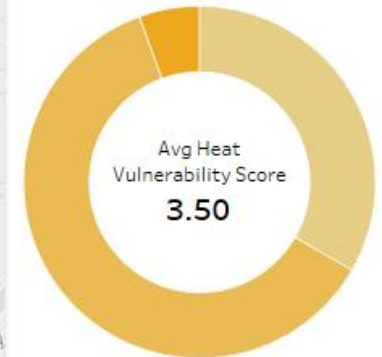
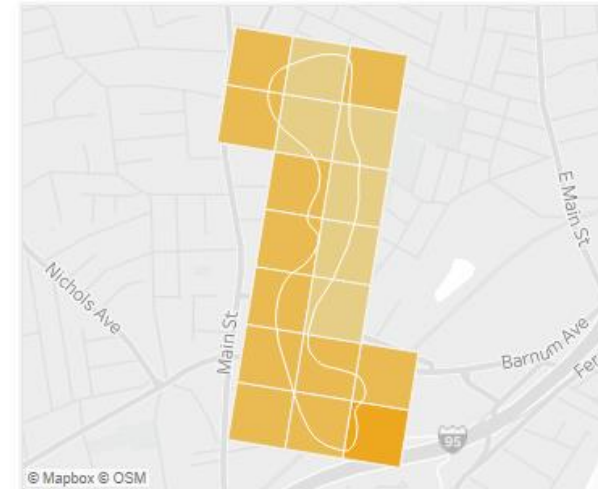
Flood Vulnerability



Combined Vulnerability



Heat Vulnerability

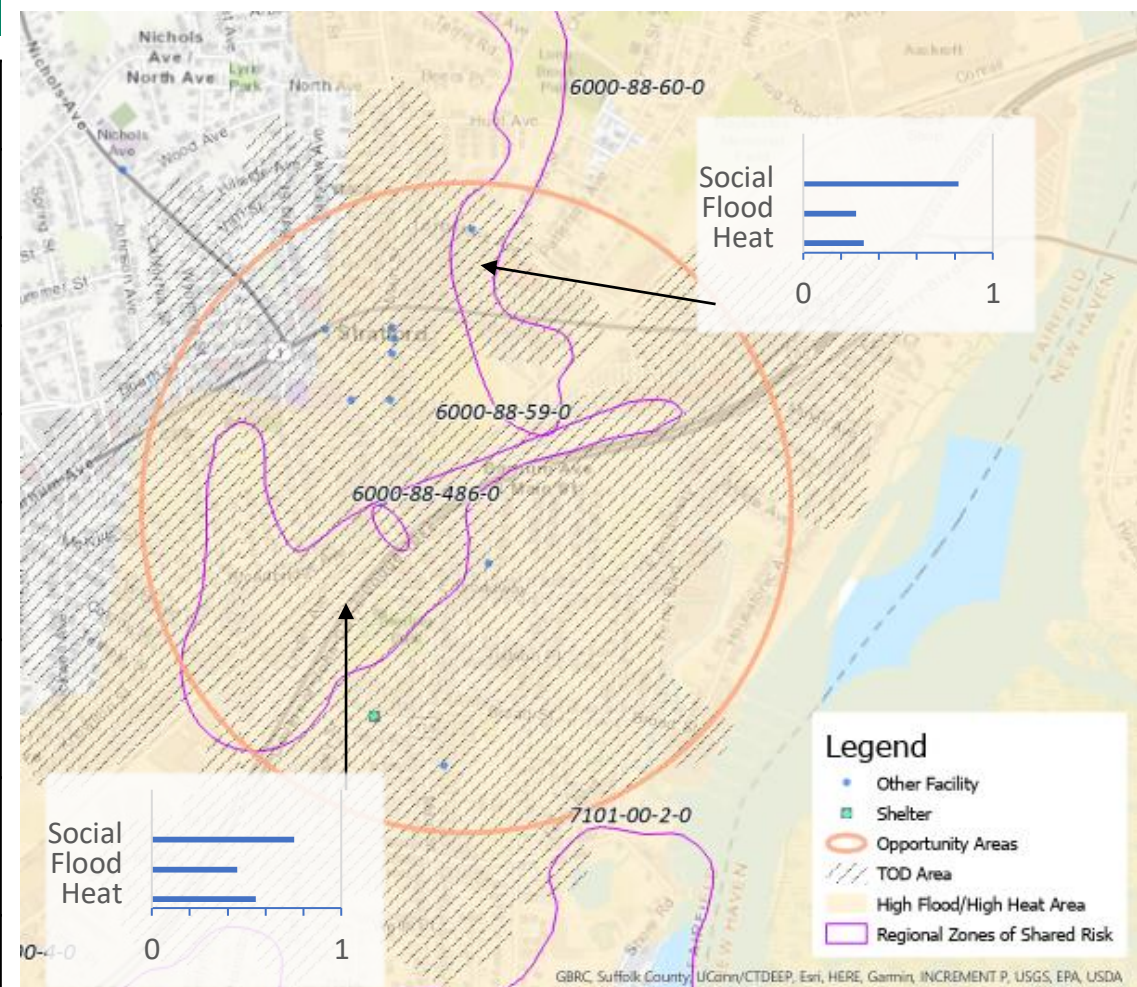


Resilient Connecticut Phase II

Potential Regional Adaptation/Resilience Opportunity Areas

Area #6 Location: Stratford
Name: Downtown Stratford Tier 1

Considerations	Characteristics of Area
Flood Vulnerability	0.28 to 0.45 (moderate-high to high)
Heat Vulnerability	0.32 to 0.55 (moderate-high to high)
Social Vulnerability	0.75 to 0.82 (moderate-high to high)
Zone of Shared Risk	Housatonic River: 6000-88
Regional Infrastructure Present	Museum, I-95, Metro-North/Amtrak
Area of Planned Development Present	Waterfront commercial node
Federal Opportunity Zone Present	N/A
Transit-Oriented Development Area	Stratford Station



Resilient Connecticut Phase II

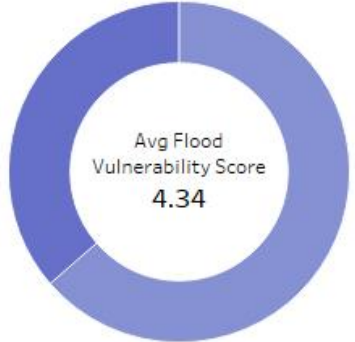
Potential Regional Adaptation/Resilience Opportunity Areas



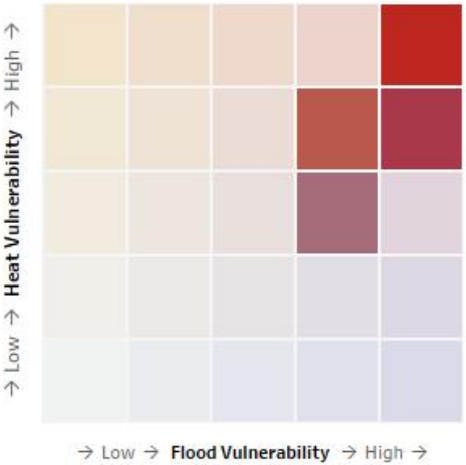
Zone of Shared Risk:
7102-00-4-0
Town: Stratford



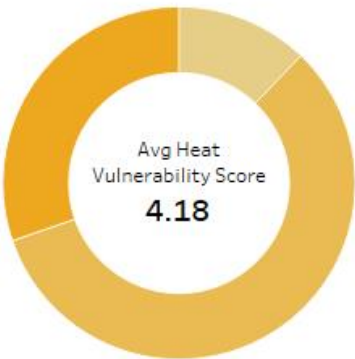
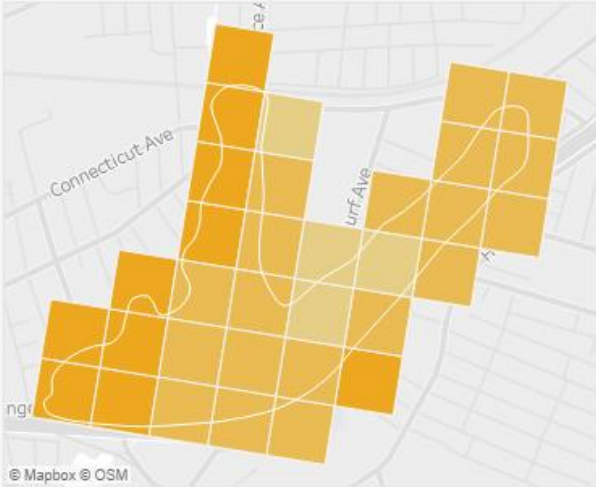
Flood Vulnerability



Combined Vulnerability



Heat Vulnerability



Resilient Connecticut Phase II

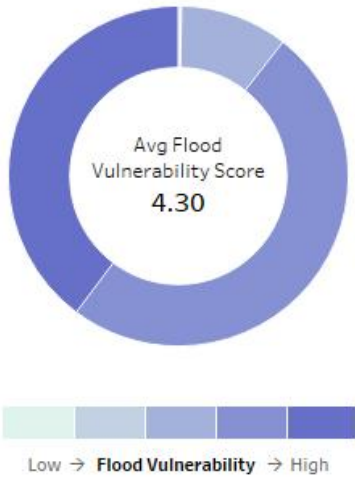
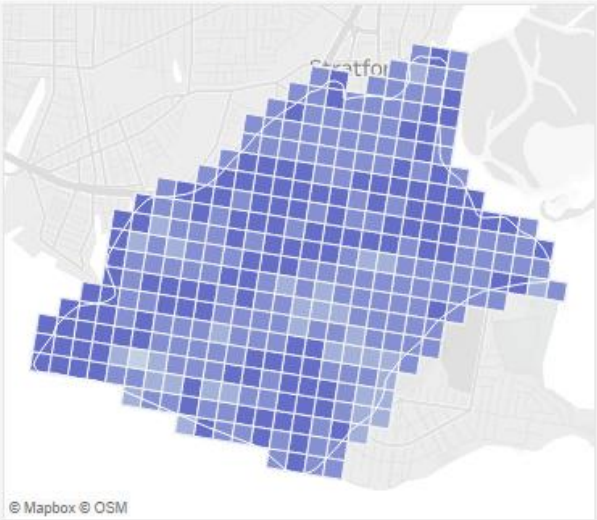
Potential Regional Adaptation/Resilience Opportunity Areas



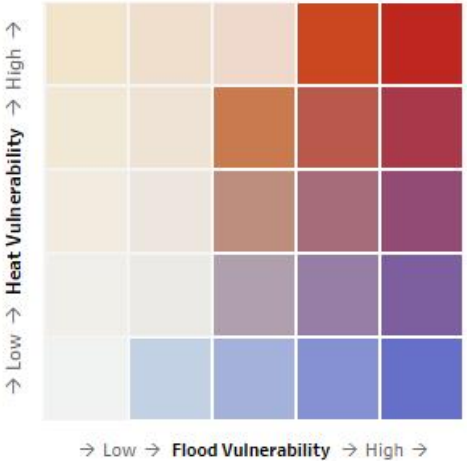
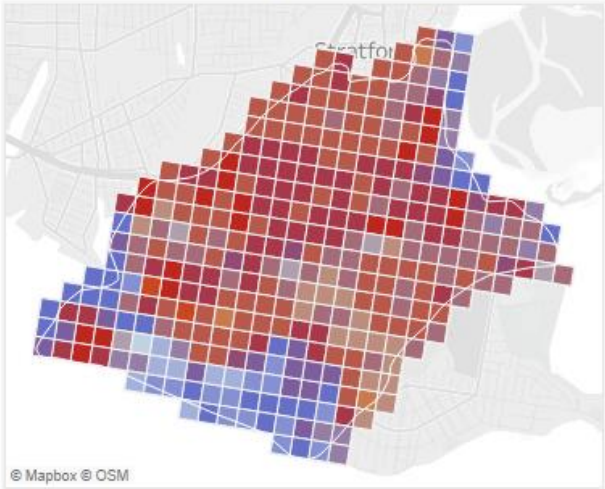
Zone of Shared Risk:
7101-00-2-0
Town: **Stratford**



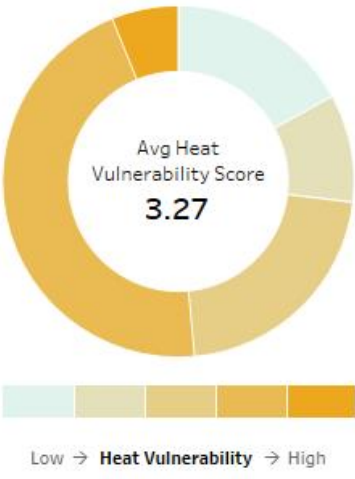
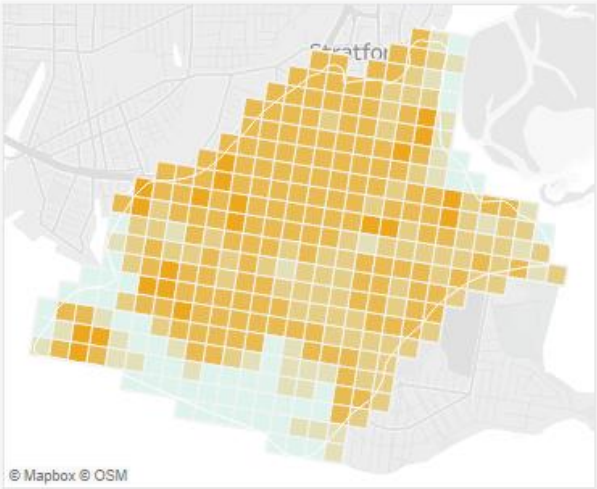
Flood Vulnerability



Combined Vulnerability



Heat Vulnerability



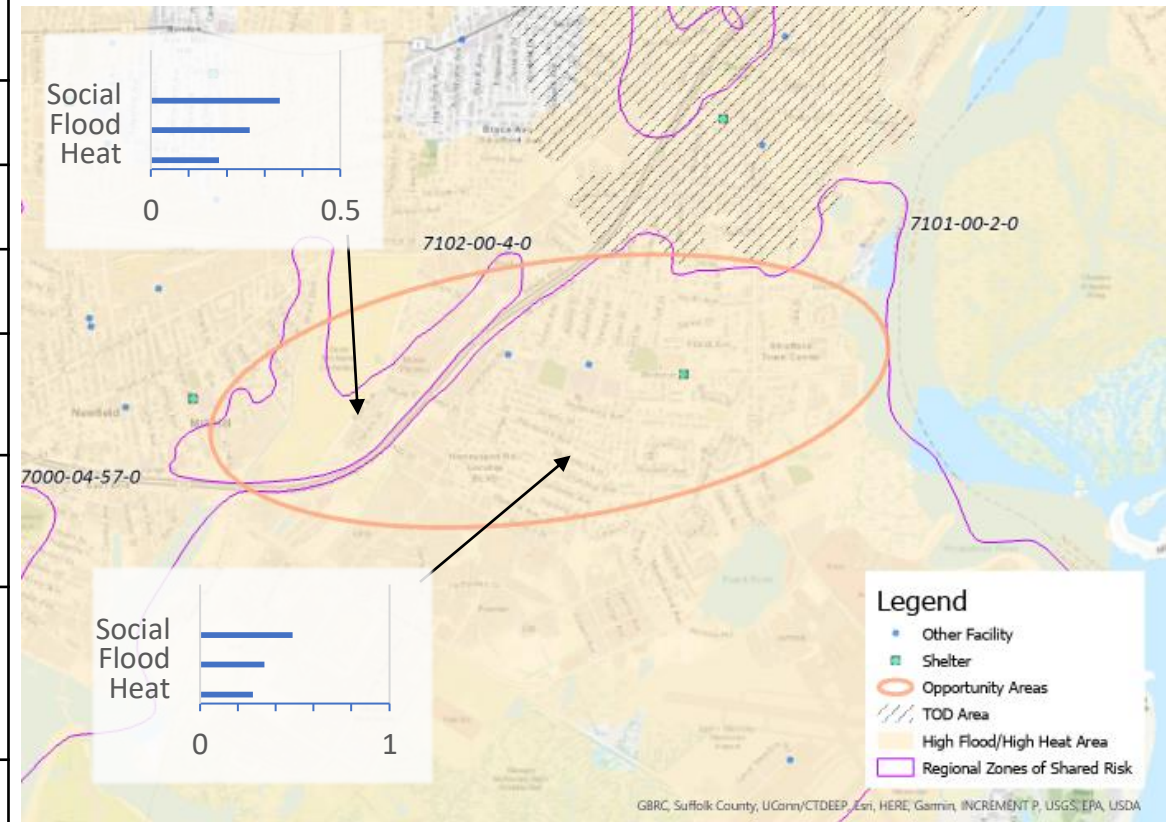
Resilient Connecticut Phase II

Potential Regional Adaptation/Resilience Opportunity Areas



Area #8
 Name: South End
 Location: Stratford
 Tier 2

Considerations	Characteristics of Area
Flood Vulnerability	0.27 to 0.37 (moderate-high to high)
Heat Vulnerability	0.32 to 0.42 (moderate-high)
Social Vulnerability	0.70 to 0.94 (moderate-high to high)
Zone of Shared Risk	Lewis Gut: 7101-00 Bruce Brook: 7102-00
Regional Infrastructure Present	Metro-North/Amtrak, Wastewater Treatment Plant
Area of Planned Development Present	Lordship redevelopment, Lordship Boulevard Industrial Area
Federal Opportunity Zone Present	Stratford
Transit-Oriented Development Area	N/A



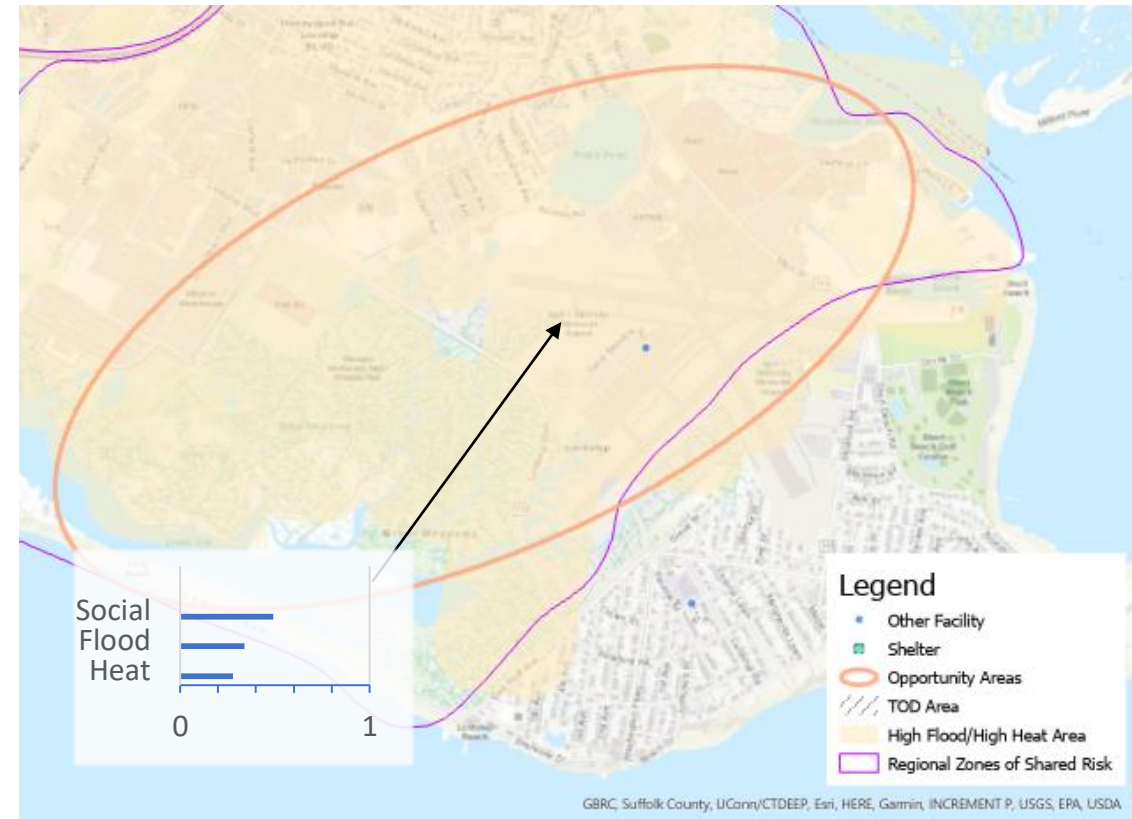
Resilient Connecticut Phase II

Potential Regional Adaptation/Resilience Opportunity Areas



Area #7
 Name: Sikorsky Airport
 Location: Stratford
 Tier 2

Considerations	Characteristics of Area
Flood Vulnerability	0.27 (moderate-high)
Heat Vulnerability	0.32 (moderate-high)
Social Vulnerability	0.70 (moderate-high)
Zone of Shared Risk	Lewis gut: 7101-00-2-0
Regional Infrastructure Present	Wastewater treatment plant, Sikorsky Airport, Great Meadows Marsh
Area of Planned Development Present	Lordship redevelopment, Lordship Boulevard Industrial Area
Federal Opportunity Zone Present	N/A
Transit-Oriented Development Area	N/A



Resilient Connecticut Phase II

Potential Regional Adaptation/Resilience Opportunity Areas



Report Out



Report Out

- **What are some of the key findings?**
(missing asset/infrastructure, prioritize asset/infrastructure,
- **What are the take-aways?**
(are some areas better opportunities, planning efforts/projects already under way, possible linkages with Resilient Connecticut and other efforts)
- **What should happen next?**
(identify other opportunity areas, project types, municipal or community engagement, explore specific vulnerabilities)

Resilient Connecticut Phase II

Potential Regional Adaptation/Resilience Opportunity Areas



Next Steps



Resilient Connecticut Phase II

Potential Regional Adaptation/Resilience Opportunity Areas



Next Steps

- Draft report of potential adaptation/resilience opportunities to be issued June 2021
 - ✓ Will describe the flood and heat CCVI tools, the zones of shared risk, the TOD area in the regions, regional assets and infrastructure, etc.
- Transition from Resilient Connecticut Phase II to Resilient Connecticut Phase III
 - ✓ CIRCA's Resilient Connecticut team will work with COGs, municipalities, and State agency partners to advance the Phase II planning in a number of these opportunity areas over the next two years.
 - ✓ CIRCA's Resilient Connecticut team will be looking for the opportunity areas where they can make the most impact and provide the most value (e.g. where planning gaps exist, where alignment can be drawn with COG and community priorities, and where local or state leverage is possible).
 - ✓ CIRCA will help identify other funding opportunities going forward.

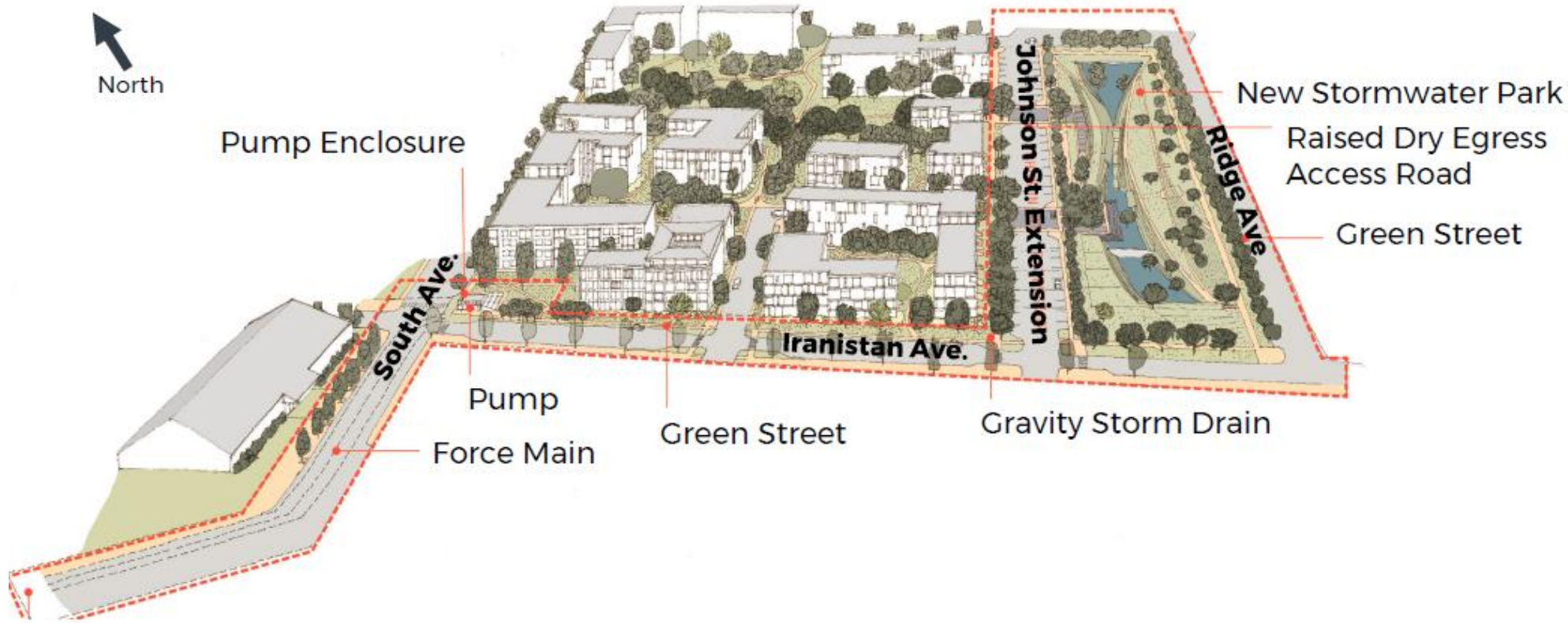
Examples of Adaptation and Resilience Projects



- What are the flood-related benefits?
- What are the heat-related benefits?
- What are the benefits to vulnerable populations?

Example: Resilient Bridgeport – Flood Protection System and Resilience Community Center

Examples of Adaptation and Resilience Projects



- What are the flood-related benefits?
- What are the heat-related benefits?
- What are the benefits to vulnerable populations?

Example: Rebuild By Design Bridgeport – Stormwater Management Improvements and Green Infrastructure

Resilient Connecticut Phase II

Potential Regional Adaptation/Resilience Opportunity Areas

Examples of Adaptation and Resilience Projects



- What are the flood-related benefits?
- What are the heat-related benefits?
- What are the benefits to vulnerable populations?
- What is the connection to TOD and resilient corridors?

Example: Meriden Green – Flood Mitigation Project near Meriden TOD



Resources

- Resilient Connecticut web site
<https://resilientconnecticut.uconn.edu/>
- Climate fact sheets
<https://resilientconnecticut.uconn.edu/2020/10/07/connecticut-climate-fact-sheets-now-available/>
- Climate Change Vulnerability Index (CCVI)
<https://resilientconnecticut.uconn.edu/ccvi/>
- Resilient Connecticut Story Map
<https://mminc.maps.arcgis.com/apps/MapSeries/index.html?appid=c700755a764e421596f9fa3719ea5262&folderid=f47a498583604f3f9601ce1de67f7407>