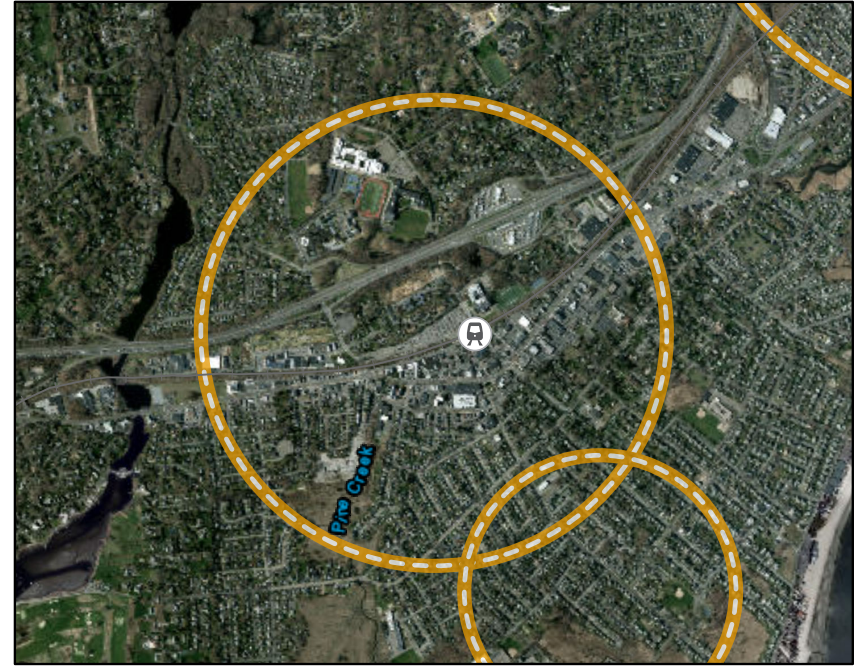
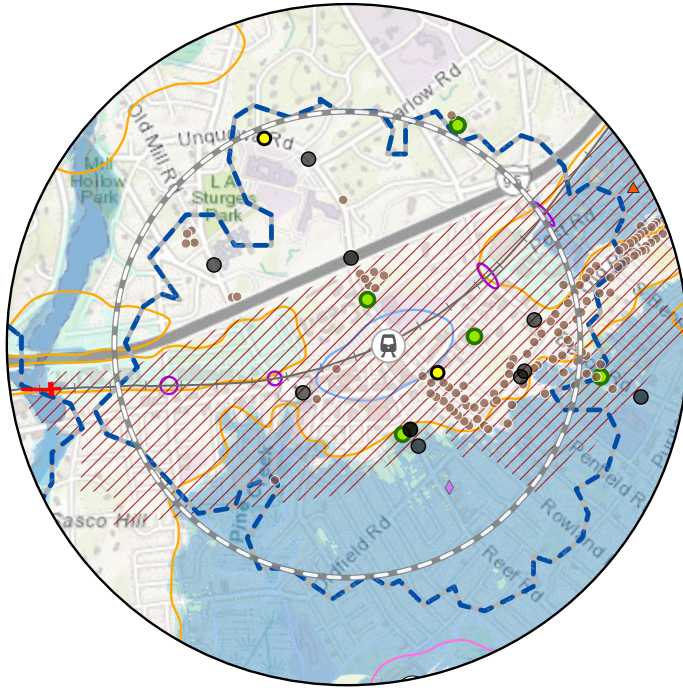
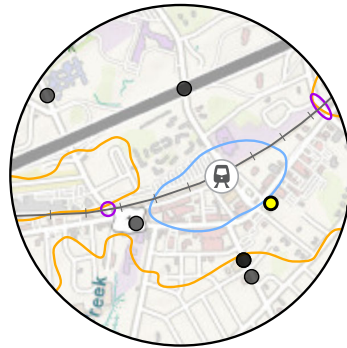


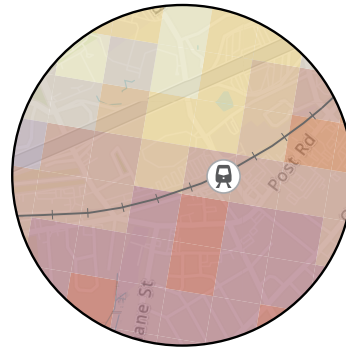
Resilience Opportunity Areas Process



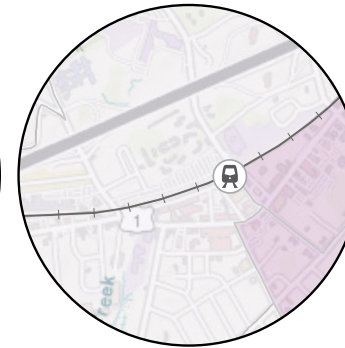
FEMA Flood Zones & CIRCA 1% Annual Chance 2050



Zones of Shared Risk with Hazard Mitigation Project Locations



Climate Change Vulnerability Index (CCVI)

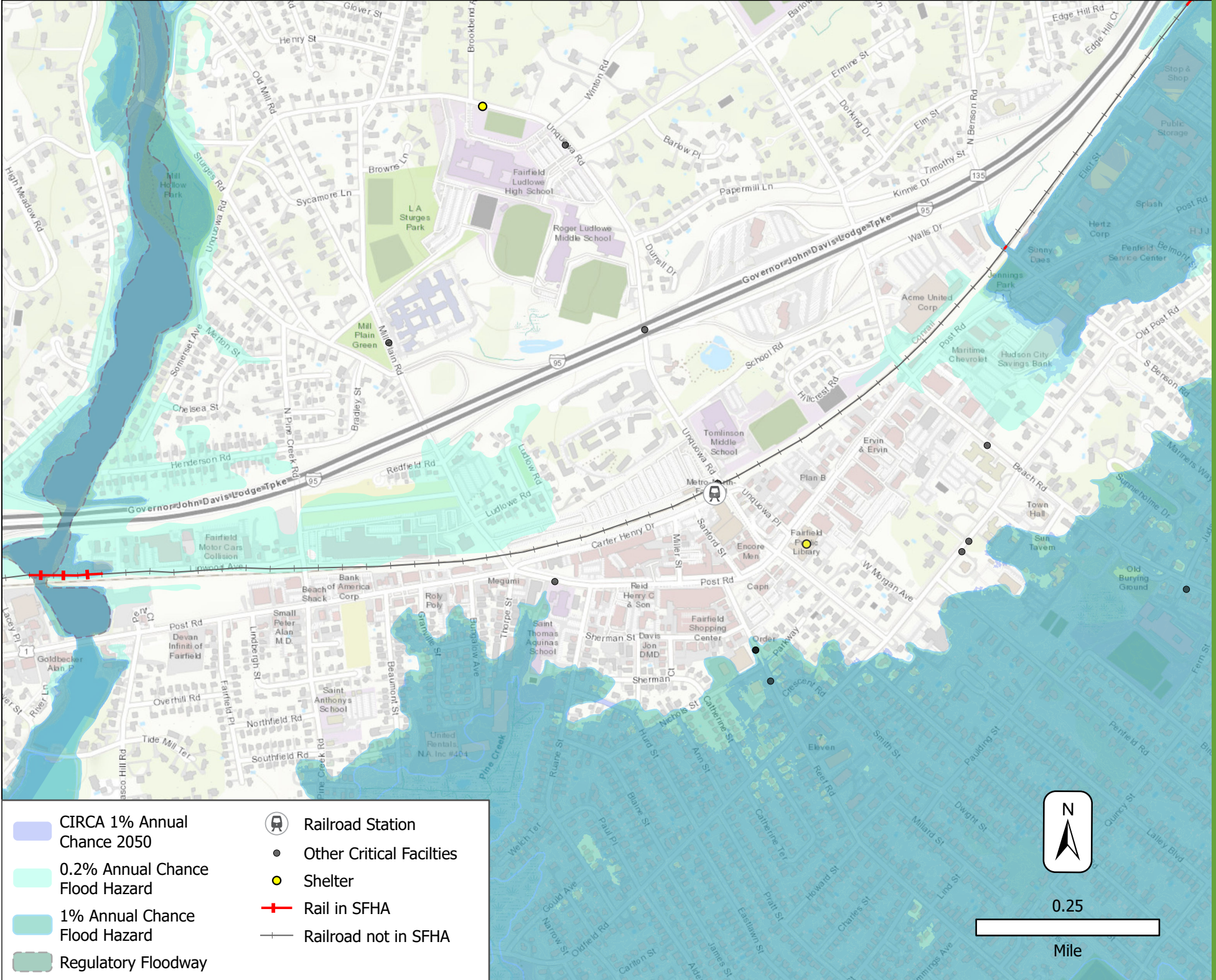


Overall Social Vulnerability



Planned Development Area & Historic Resources

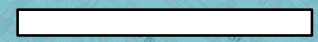
New York State, State of Connecticut, Maxar, Esri, HERE, Garmin, GeoTechnologies, Inc., GBRC, Esri, HERE, Garmin, SafeGraph, GeoTechnologies, Inc., METI/NASA, USGS, EPA, NPS, US Census Bureau, USDA, GBRC, Suffolk County, UConn/CTDEEP, Esri, HERE, Garmin, GeoTechnologies, Inc., USGS, METI/NASA, EPA, USDA



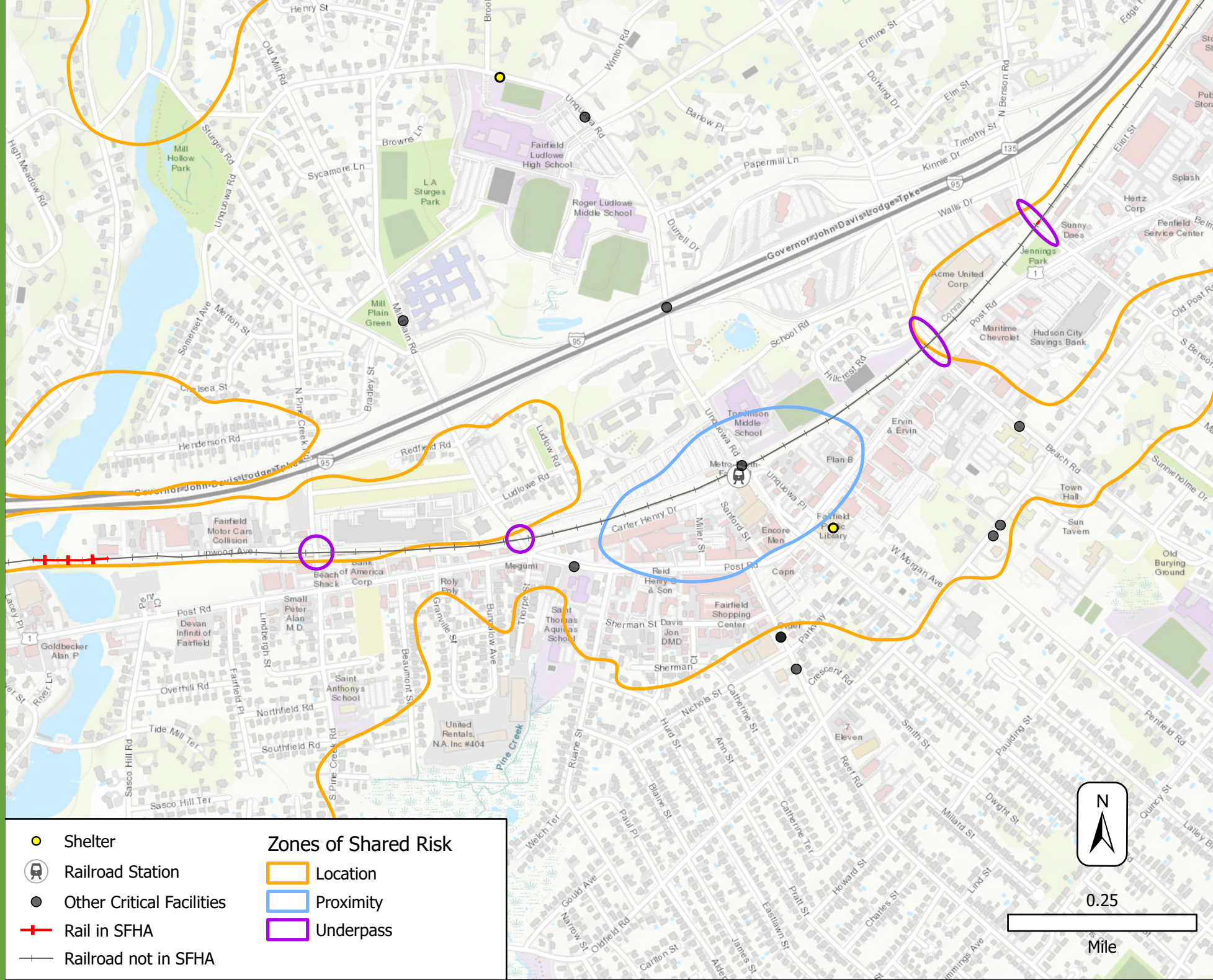
- CIRCA 1% Annual Chance 2050
- 0.2% Annual Chance Flood Hazard
- 1% Annual Chance Flood Hazard
- Regulatory Floodway
- Railroad Station
- Other Critical Facilities
- Shelter
- Rail in SFHA
- Railroad not in SFHA











0.25

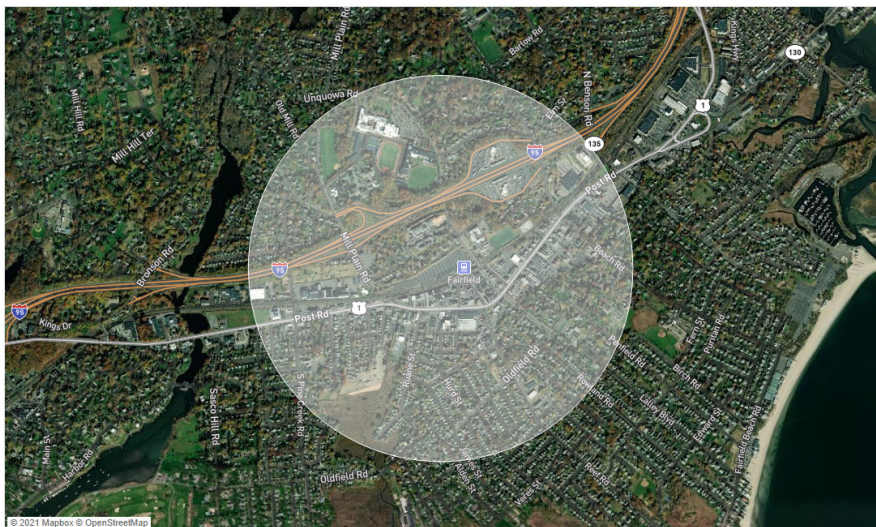


Mile

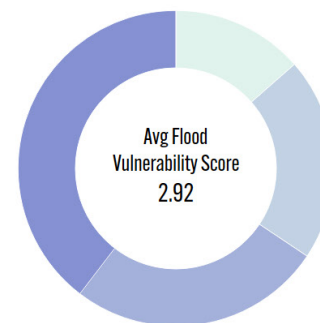
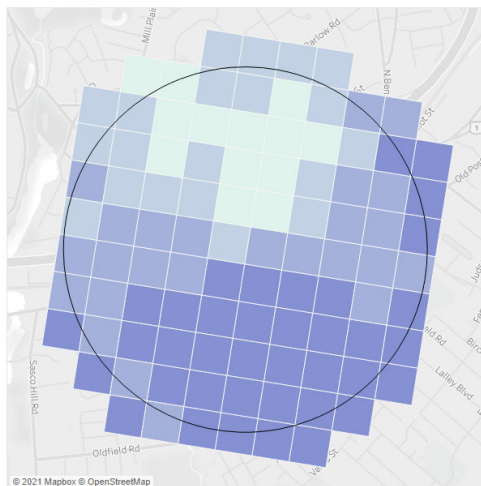


	Shelter	Zones of Shared Risk	
	Railroad Station		Location
	Other Critical Facilities		Proximity
	Rail in SFHA		Underpass
	Railroad not in SFHA		

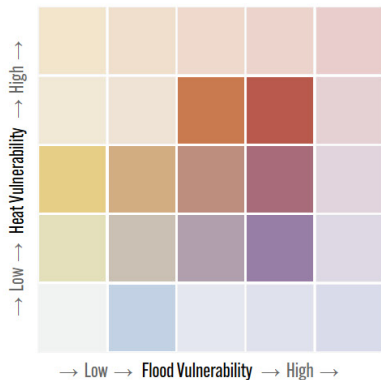
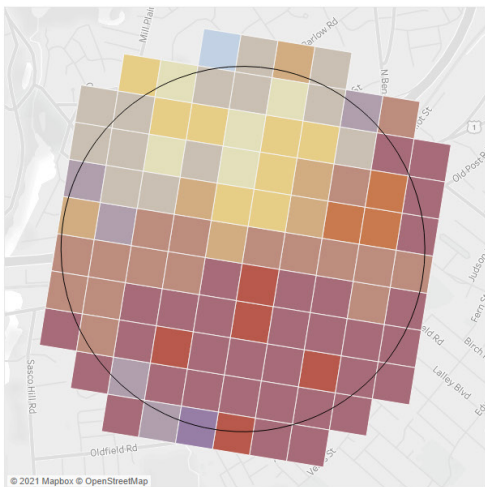
Fairfield



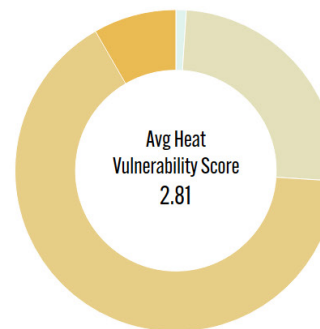
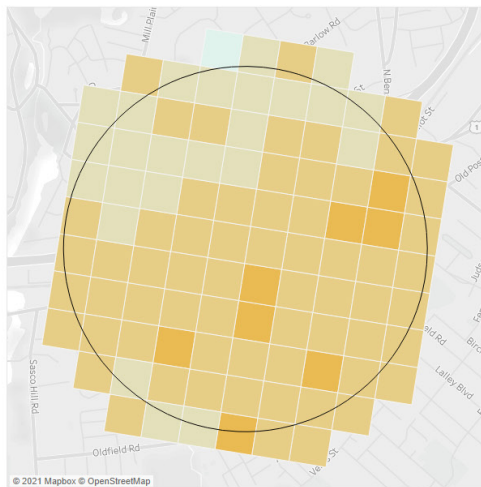
Flood Vulnerability

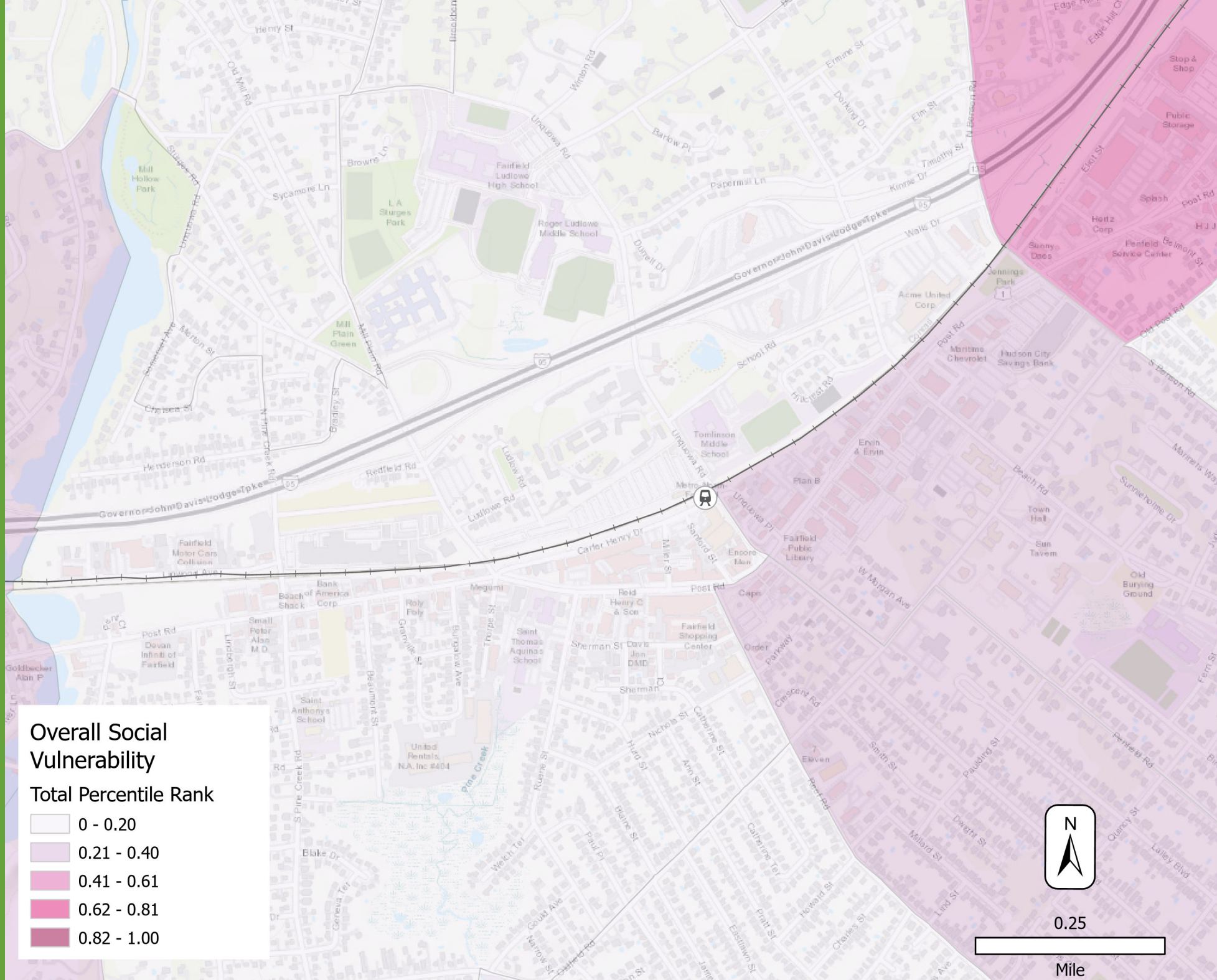


Combined Vulnerability



Heat Vulnerability

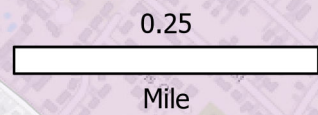


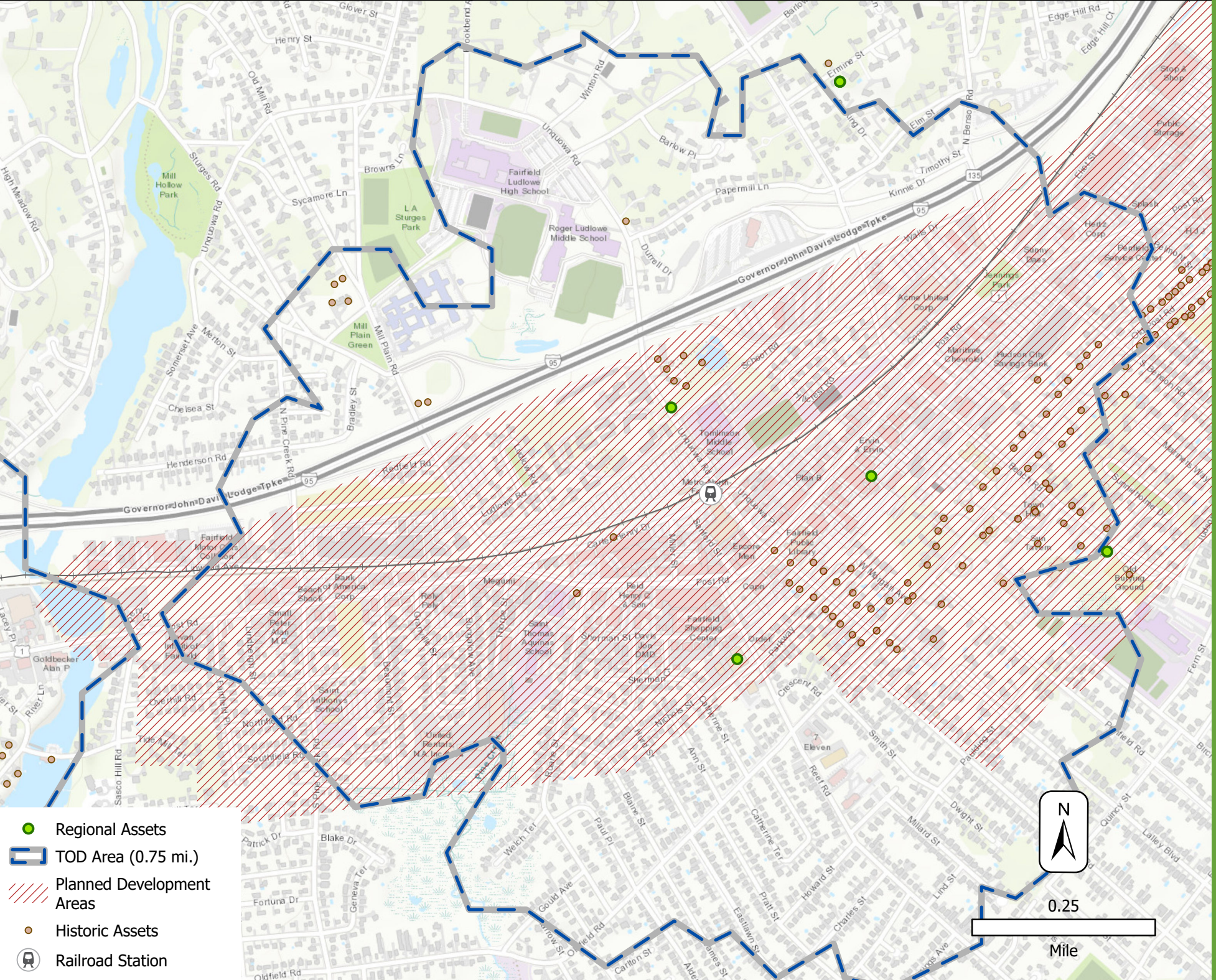


Overall Social Vulnerability

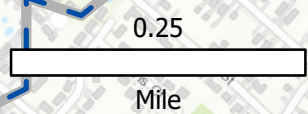
Total Percentile Rank

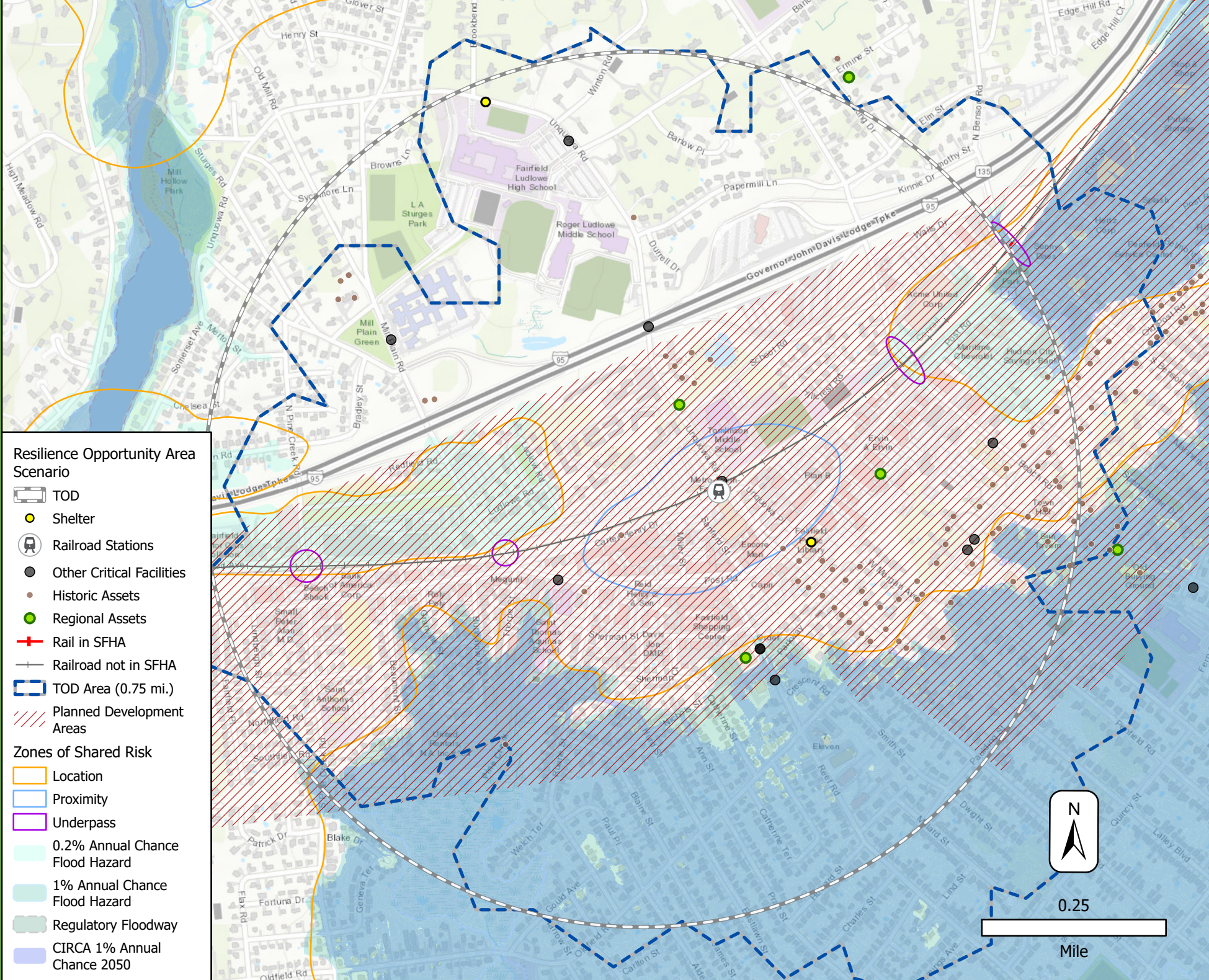
- 0 - 0.20
- 0.21 - 0.40
- 0.41 - 0.61
- 0.62 - 0.81
- 0.82 - 1.00





- Regional Assets
- TOD Area (0.75 mi.)
- Planned Development Areas
- Historic Assets
- Railroad Station





Resilience Opportunity Area Scenario

- TOD
- Shelter
- Railroad Stations
- Other Critical Facilities
- Historic Assets
- Regional Assets
- Rail in SFHA
- Railroad not in SFHA
- TOD Area (0.75 mi.)
- Planned Development Areas

- Zones of Shared Risk**
- Location
 - Proximity
 - Underpass
 - 0.2% Annual Chance Flood Hazard
 - 1% Annual Chance Flood Hazard
 - Regulatory Floodway
 - CIRCA 1% Annual Chance 2050

