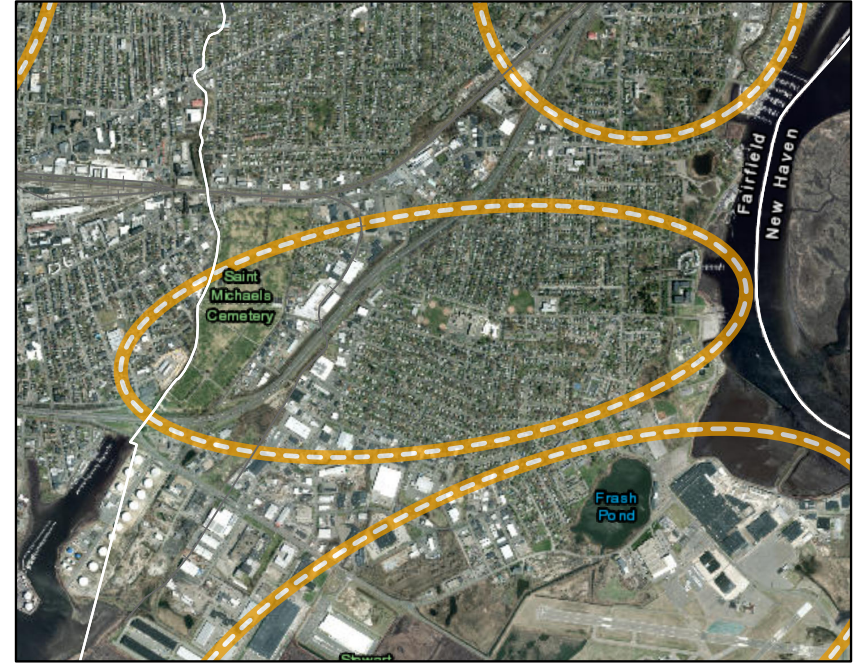
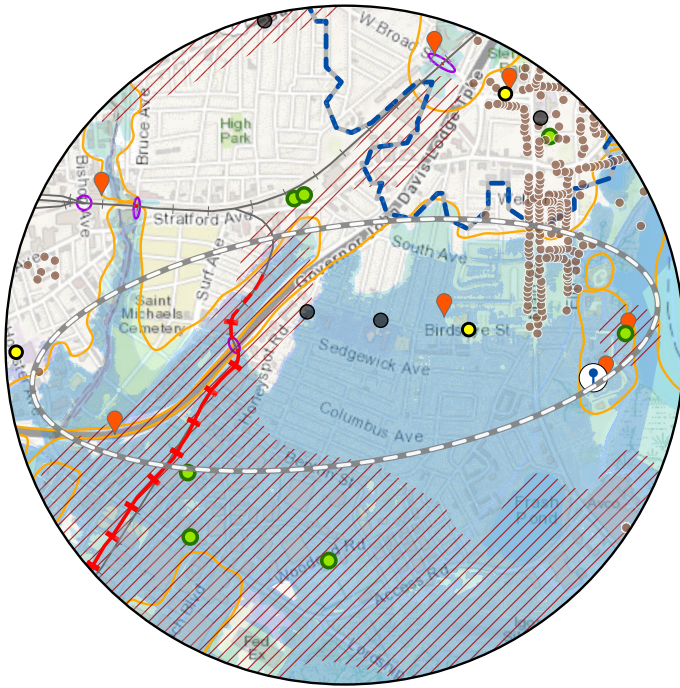
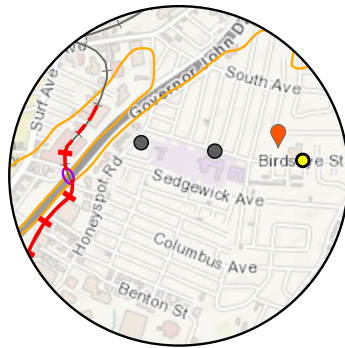


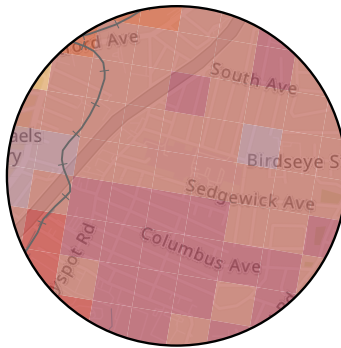
Resilience Opportunity Areas Process



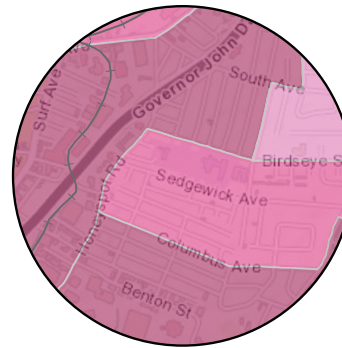
FEMA Flood Zones & CIRCA 1% Annual Chance 2050



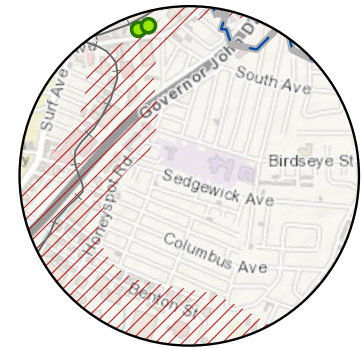
Zones of Shared Risk with Hazard Mitigation Project Locations



Climate Change Vulnerability Index (CCVI)



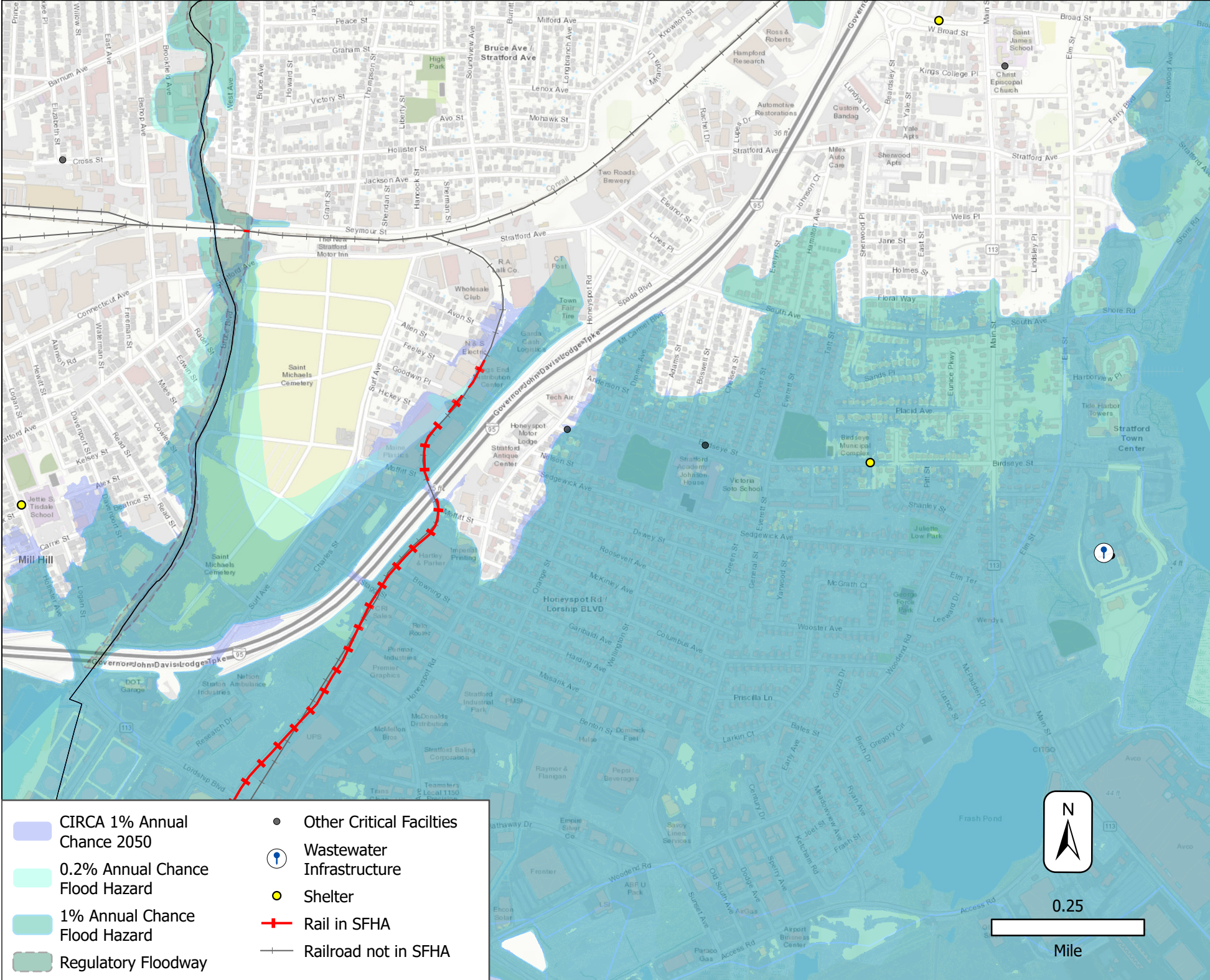
Overall Social Vulnerability



Planned Development Area & Historic Resources

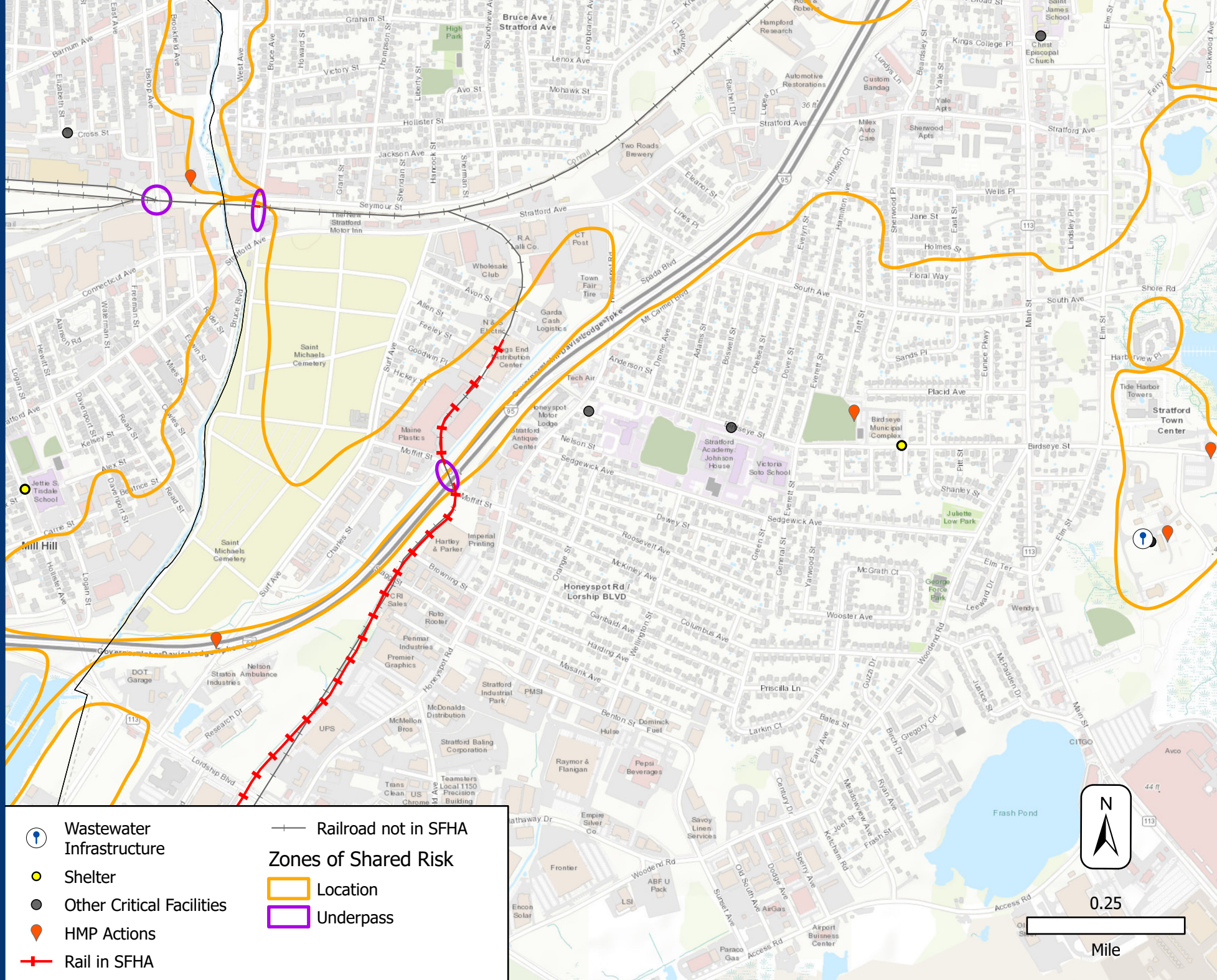
Esri, HERE, Garmin, GeoTechnologies, Inc., GBRC, Esri, HERE, Garmin, SafeGraph, GeoTechnologies, Inc., METI/NASA, USGS, EPA, NPS, US Census Bureau, USDA, GBRC, Suffolk County, UConn/CTDEEP, Esri, HERE, Garmin, GeoTechnologies, Inc., USGS, METI/NASA, EPA, USDA, State of Connecticut, Maxar

FEMA Flood Zones & CIRCA 1% Annual Chance 2050
S. END STRATFORD



S. END STRATFORD

Zones of Shared Risk



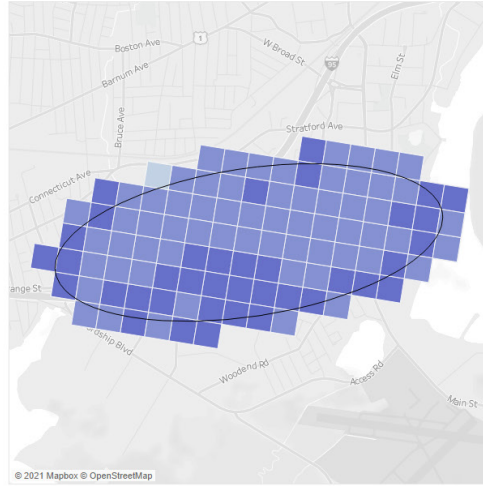
0.25

Mile

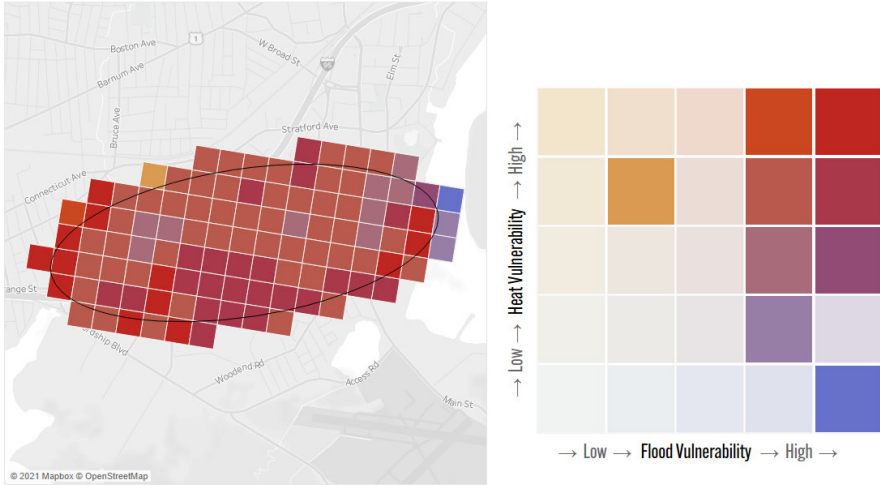
South End Stratford



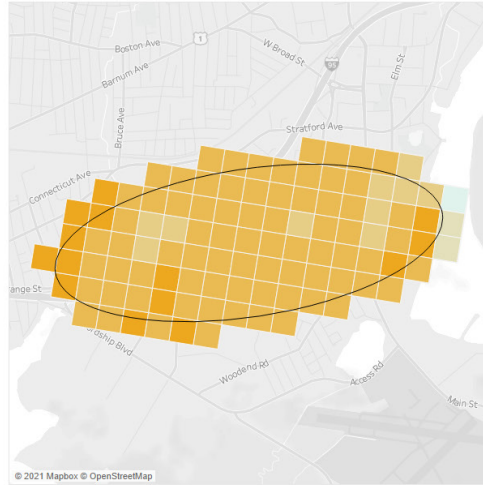
Flood Vulnerability

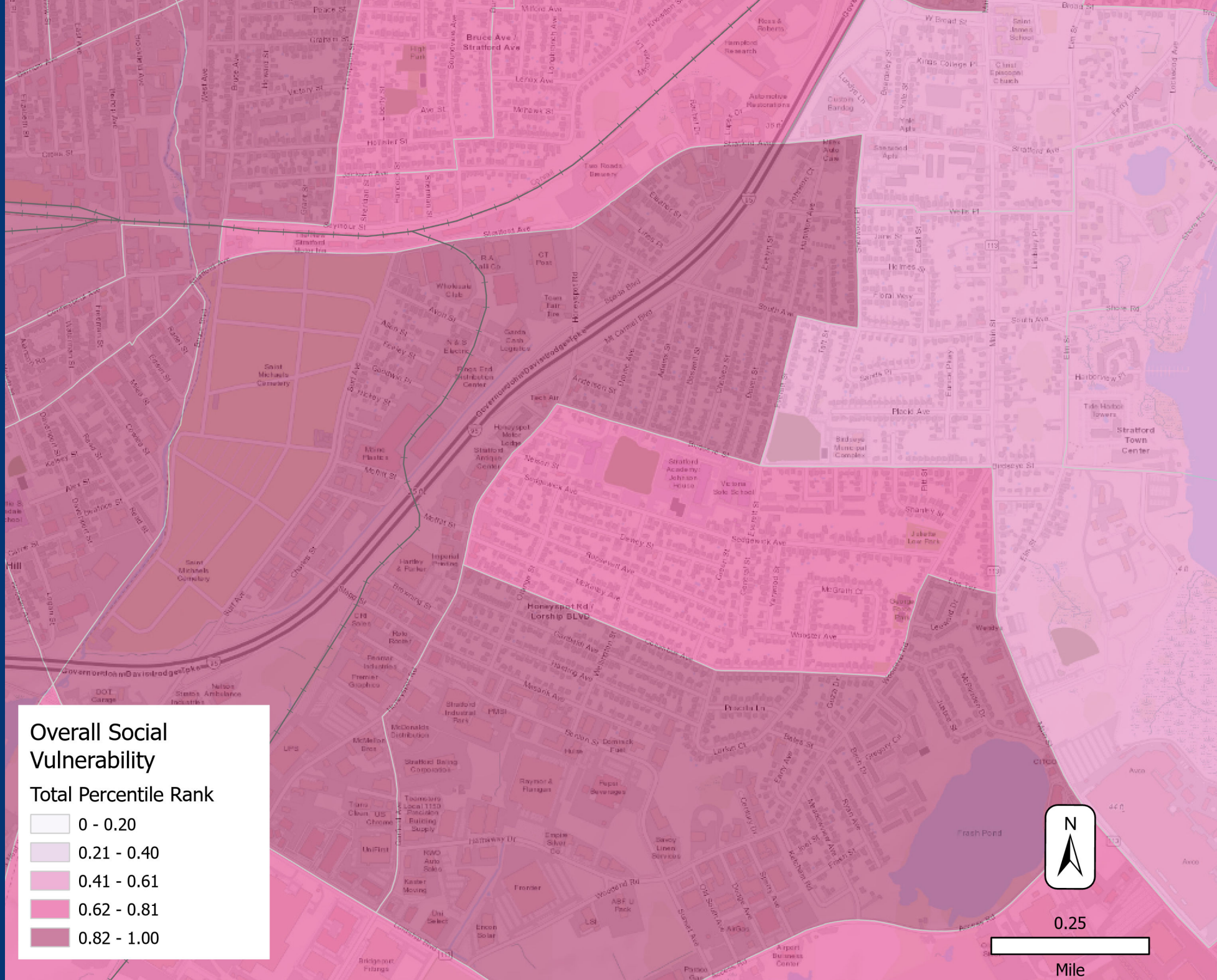


Combined Vulnerability



Heat Vulnerability



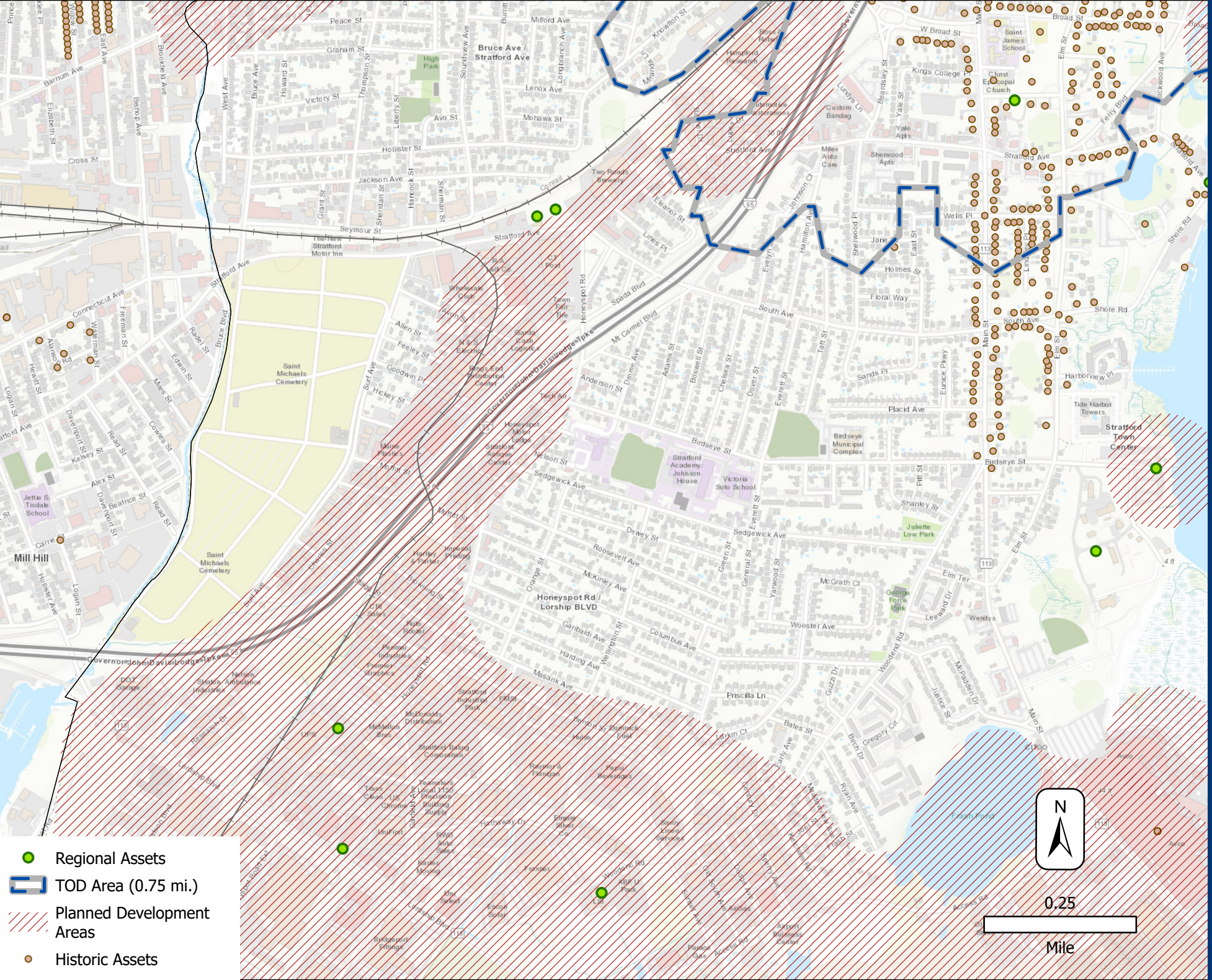


Overall Social Vulnerability

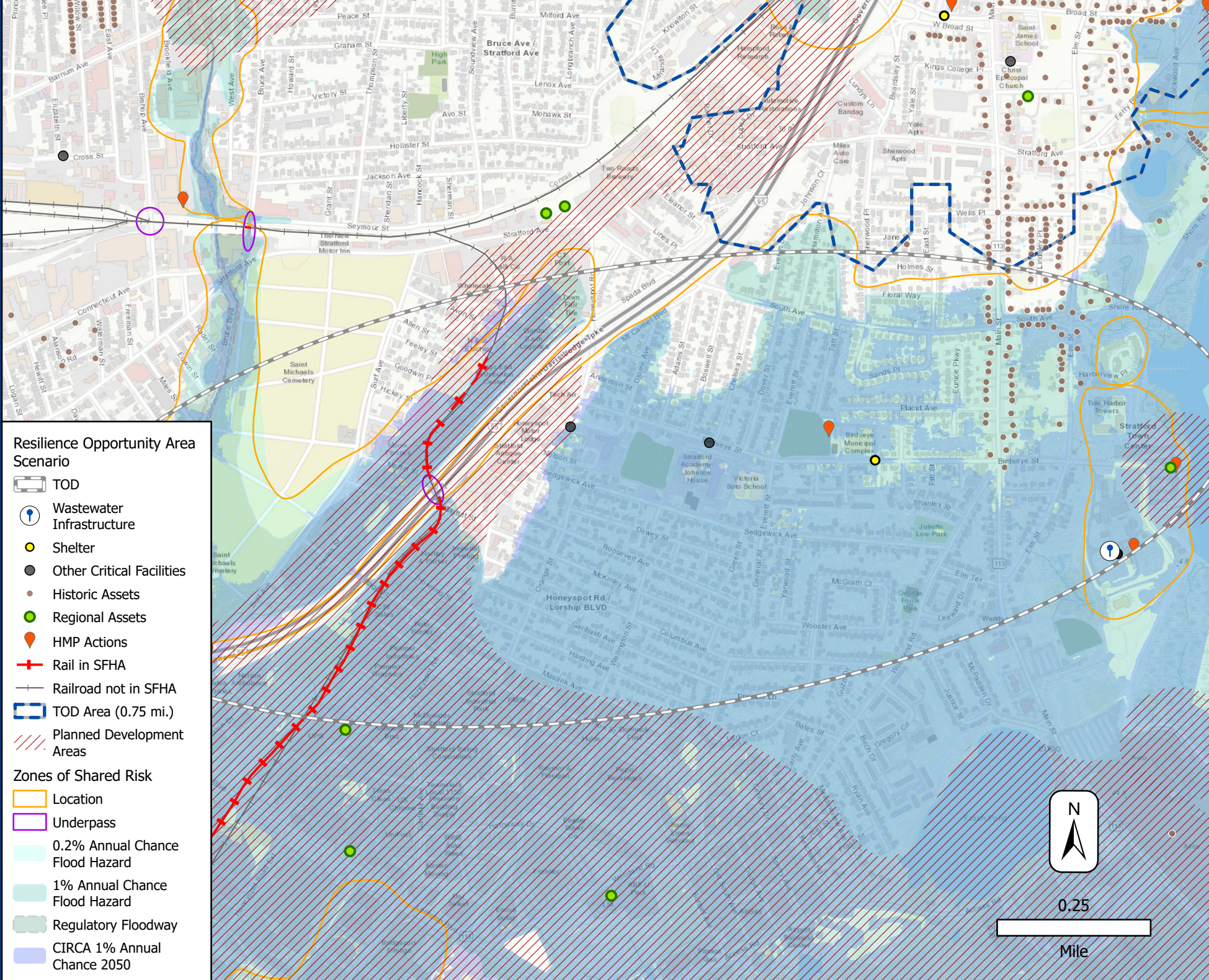
Total Percentile Rank

- 0 - 0.20
- 0.21 - 0.40
- 0.41 - 0.61
- 0.62 - 0.81
- 0.82 - 1.00





- Regional Assets
- TOD Area (0.75 mi.)
- Planned Development Areas
- Historic Assets



Resilience Opportunity Area Scenario

- TOD
- Wastewater Infrastructure
- Shelter
- Other Critical Facilities
- Historic Assets
- Regional Assets
- HMP Actions
- Rail in SFHA
- Railroad not in SFHA
- TOD Area (0.75 mi.)
- Planned Development Areas
- Zones of Shared Risk**
- Location
- Underpass
- 0.2% Annual Chance Flood Hazard
- 1% Annual Chance Flood Hazard
- Regulatory Floodway
- CIRCA 1% Annual Chance 2050

